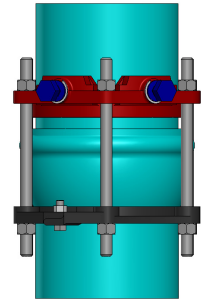
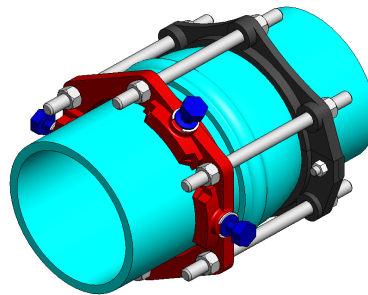
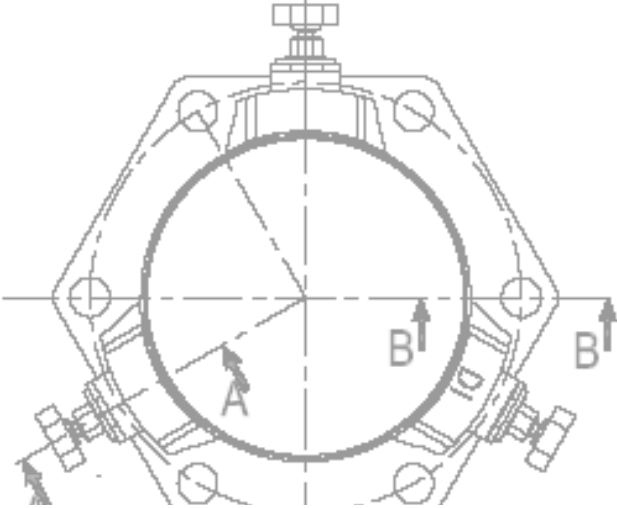


ONE-LOK™ Series SLCEH Harness for PVC Pipe



SIGMA model SLCEH is a restrained joint harness assembly for new installations of AWWA C-900/905 PVC push-on pipe bells. A ONE-LOK Model SLC wedge-action restraining gland is used to secure the PVC pipe spigot and connects with all-thread restraining rods and nuts to a two-piece back-up ring that seats against the PVC pipe bell. Model SLCEH allows for easy assembly since the restraining gland and back-up ring can be rotated to provide easy and proper alignment of the restraining rods.

Sample Specification:

New PVC push-on pipe bell joints shall be restrained using a wedge-action restraining gland on the PVC pipe spigot and connected to a two-piece back-up ring located against the pipe bell using restraining rods and nuts. The wedge-action restraining gland, wedge segments, break-off top actuating bolts and two-piece back-up ring shall be manufactured of high strength ductile iron in accordance with ASTM A536, Grade 65-45-12. Breakaway tops shall be incorporated in the design of the actuating bolts to visually ensure proper torque. The manufacturer of the actuating bolt must incorporate a quality control procedure that is deemed acceptable by the specifier and positively assures precise and consistent operating torque of the breakaway top. Restraining all-thread rods and nuts shall be manufactured of high strength, low alloy steel in accordance with ASTM/ANSI A21.11/C111. The pressure rating capacity of the restraining harness must be equal to the water working pressure rating of the PVC pipe joints upon which they are installed. Restrained joint harness assembly shall be SIGMA Corporation Model SLCEH or approved equal.

Material:

- Gland body, brackets, wedge segments & actuating bolts ASTM A536 65-45-12 ductile iron.
- Restraining Rods & Nuts: High strength, low alloy steel meeting AWWA/ANSI C111/A21.11 with minimum 65,000 psi tensile strength and 45,000 psi yield strength.
- Side Clamping Bolts & Hex Nuts: ASTM A449 high strength steel..

ONE-LOK™ Series SLCEH Harness for PVC Pipe

Installation Instructions:

1. Install the two-piece back-up ring behind the PVC pipe bell tightening the assembly bolts to 90-ft lbs.
2. Slide the ONE-LOK wedge-action restraining gland onto the pipe spigot with the frontal lip facing the pipe end. Insert the PVC pipe spigot into the pipe bell per the pipe manufacturer's recommendation. Insert the all-thread restraining rods and nuts in the corresponding bolt holes from the wedge-action gland to the back-up ring. Tighten the restraining nuts until there are exposed threads on the backside of both bolts.
3. Pull the wedge-action restraining gland on the spigot pipe away from the pipe bell until the back-up ring seats evenly against the pipe bell slope. Hand-tighten the break-off top actuating bolts until contact is made between each wedge segment and the PVC pipe wall.
4. Alternately tighten the break-off top bolts in a star pattern until the heads fracture, locking the wedge restraining gland against the pipe wall. Snug both restraining nuts to ensure a sound assembly.

Dimensions in Inches, Weights in Pounds

Size	Item No.	Pressure Rating	No. Rods	Rod Length	Rod Diameter	Minimum Rod Clearance	Weight of SG+One-Lok SLCE+Rod (lb)
3	SLCEH3	235	4	17	5/8	5.45	13.61
4	SLCEH4	235	4	17	3/4	6.75	19.18
6	SLCEH6	235	6	18	3/4	8.75	29.76
8	SLCEH8	235	6	18	3/4	11.00	36.84
10	SLCEH10	235	8	24	3/4	13.25	50.40
12	SLCEH12	235	8	24	3/4	15.50	73.62