

**LOCATIONS**

**Northeast Region**

700 Goldman Drive  
Cream Ridge, NJ 08514  
Phone (800) 999-2550  
Fax (609) 758-1158  
crmcsr@sigmaco.com

**REPCO**

970 DE LA Bastican  
Victoriaville, Quebec G6T 1Y2  
Phone (888) 744-6262  
Fax (819) 758-1153  
jboucher@repco.ca

**Concord Supply**

2353 Bowman Street  
Innisfil, Ontario L9S 3V6  
Phone (877) 436-3800  
Fax (705) 436-6338  
tanya@concordsupply.ca

**Midwest Region**

21699 Torrence Avenue  
Sauk Village, IL 60411  
Phone (888) 999-0420  
Fax (708) 758-6790  
chicsr@sigmaco.com

**Southeast Region**

1500 Highway 22 W  
Alexander City, AL 35010  
Phone (800) 824-4513  
Fax (256) 234-4956  
alxcsr@sigmaco.com

**Southwest Region**

5000 Askins Lane  
Houston, TX 77093  
Phone (800) 999-0109  
Fax (281) 987-0200  
htncsr@sigmaco.com

**Western Region**

4652 E. Guasti Road  
Ontario, CA 91761  
Phone (800) 688-6230  
Fax (909) 391-2033  
ontcsr@sigmaco.com

**Auburn, Washington (Branch)**

902 W Main Street  
Auburn, WA 98001  
Phone (800) 688-6230  
Fax (909) 391-2033  
ontcsr@sigmaco.com

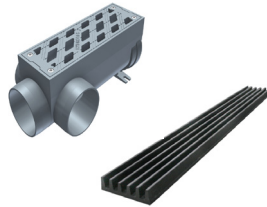
Whether your project is a residential driveway, major airport or heavy industrial, we have the product to ensure all your surface water drainage needs are met. We are pleased to offer Hydrotec's Fiber Reinforced Concrete Trench Drains and Polylok Trench Drains. These products are faster, easier, lighter and more robust than existing alternatives on the market. So, whether your project requirements are light duty or extremely heavy duty, allow SIGMA to provide you with a drainage system that will exceed your expectations.

**Hydrotec Fiber Reinforced Concrete Trench Drains**



- 10 Manufacturer Warranty
- 4", 6", 8", 12" and 16" wide channels
- Sloped Channels (4" and 6" systems)
- Up to Load Class F.
- Variable installation techniques
- Boltless patented locking mechanism
- ADA Compliant

**Hydrotec Ductile Iron Trench Drains**



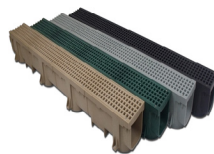
- 10 Year Manufacturer Warranty
- 4", 6", 8" and 12" wide channels
- Up to Load Class F.
- Best in Class Durability
- Vandal Resistant, Rattle Free
- Water Tight/Sealed System (HYDROBlock)
- Simple, low cost installation

**SIGMA Stainless Trench Drains**



- Ultimate Corrosion Resistance
- 304 and 316 Grade Stainless
- Up to Load Class F
- Fully Customizable
- NSF Certified
- Meets FDA Standards
- Slot and Removable Grates Available

**Polylok Drainage Products**



- 4' Long Channels
- Up to Load Class C
- Excellent Corrosion Resistance
- Black, Tan, Green and Grey Channels/Grates
- Reversible Plastic Grates
- Ductile Iron Grate Available
- Sump Boxes and Catch Basins

**Galvanized Steel Trench Drains**



- Up to Load Class D
- 3 Separate Neutral Depths Available
- Light Weight Channels
- Shatter Proof Channels
- 2 Meter Channel Lengths