

SIGMA™ Drainage Products

Innovations in Precast,
Drainage and Wastewater products

SEALS FOR 12" & 20" D-BOXES

Our D-Box seals are the only true watertight seals on the market today. Our 4" seal fits in both our 12" and 20" plastic D-Box. It accepts 2", 3", 4" and corrugated pipe. Our 6" seal works in our 20" plastic D-Box. No other seals can do so much!

Features:

- Provides a watertight connection
- No more different fittings to inventory
- Easy to install
- Easy tear outs to accommodate different size pipe



12" GRATE FOR CORRUGATED PIPE

Ideal for use with 12" Corrugated or ribbed pipe. These 12" grates are made of HDPE with the highest UV Protection on the market today. These grates will withstand normal residential and light commercial traffic.

Features:

- Skid resistance surface
- Available in green or black
- Highest level of UV Protection included



15" GRATE FOR CORRUGATED PIPE

Ideal for use with 15" Corrugated or ribbed pipe. These 15" grates are made of HDPE with the highest UV Protection on the market today. These grates will withstand normal residential and light commercial traffic.

Features:

- Skid resistance surface
- Available in green or black
- Highest level of UV Protection included

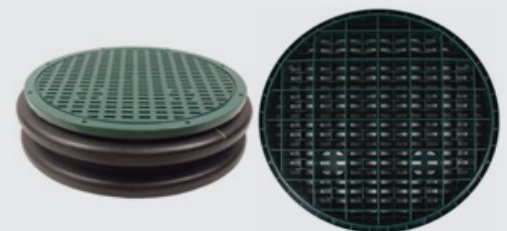


18" GRATE FOR CORRUGATED PIPE

Ideal for use with 18" Corrugated or ribbed pipe. These 18" grates are made of HDPE with the highest UV Protection on the market today. These grates will withstand normal residential and light commercial traffic.

Features:

- Skid resistance surface
- Available in green or black
- Highest level of UV Protection included



Quality – Service – Commitment – Delivered.

700 Goldman Drive, Cream Ridge, NJ 08514
Email trenchdrainsolutions@sigmaco.com
www.sigmaco.com

Drainage Products

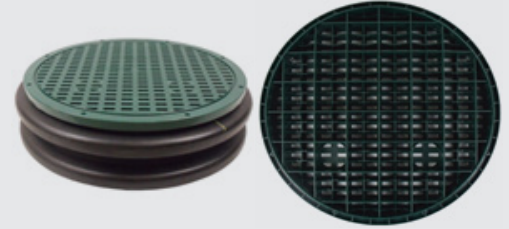
Innovations in Precast,
Drainage and Wastewater products

24" GRATE FOR CORRUGATED PIPE

Many of our customers asked for heavy duty riser grates that can work with either risers or U.S. and Canadian (IPEX) corrugated pipe. Our engineers developed 24" Heavy Duty Grates that will do just that. As with all of our riser products, we use the highest UV package available. These grates have been installed at golf courses, homes and businesses.

Features:

- Fits 24" Risers
- Fits IPEX/Corrugated Pipe
- Highest level of UV Protection included



12" ROUND D-BOX

The Drainage Boxes are the most versatile box on the market today. You can choose what height drainage boxes you want your inlets and outlets to be. It also comes complete with the only seal of drainage boxes in the market that accepts 2", 3", 4" and corrugated pipe. No more different fittings to inventory!

Features:

- Use as Rain Drain, D-Box, or Drop Box; allows for all configurations
- Use as a rain drain for gutters, driveways & sub surface drainage
- Use as a distribution box or drop box for onsite septic systems
- Use with the 12" riser to bring cover or grate to grade as needed
- Accepts 2", 3", 4" and corrugated pipe
- Use with solid cover or grate, your choice, no additional cost
- Four stabilizing feet with every box



20" DRAIN BOX

We have your solution to all of your drainage needs with our new 20" Drain, Valve, & Meter Box! This box is great for large applications such as golf courses but is also a suitable size for the home. There's no need to worry about different colored fittings or plugs to inventory because as well as accepting 2", 3" & 4" pipe, our box can also accept 6" pipe. Our 20" Drain Box will also accept our 20" Risers so you can easily bring the Drain Box to grade. It is the most versatile Drain Box available on the market today!

Features:

- Easy to install
- Accepts risers to bring to grade
- Accepts 6", 4", 3" & 2" pipe
- Pipe can be installed at various heights



20" GRATE FOR RISER & D-BOX

Ideal for use with our risers and drain boxes, these 20" grates are made of HDPE with the highest UV Protection on the market today. These grates will withstand normal residential and light commercial traffic.

Features:

- Skid resistant surface
- Available in green or black
- Fits both 20" Risers and 20" Drain Boxes



Quality – Service – Commitment – Delivered.

700 Goldman Drive, Cream Ridge, NJ 08514
Email trenchdrainsolutions@sigmaco.com
www.sigmaco.com

Rev April 2018

Drainage Products

Innovations in Precast,
Drainage and Wastewater products

12" GRATE (EACH) FOR POLYLOK RISERS & ROUND DRAIN BOX

Ideal for use with our risers and drain boxes, these 12" grates are made of HDPE with the highest UV Protection on the market today. These grates will withstand normal residential and light commercial traffic.

Features:

- Skid resistant surface
- Available in green or black
- Fits both Polylok 12" Risers and 12" Drain Boxes
- Highest level of UV Protection included



12" & 20" GALVANIZED METAL GRATE - (EACH) FOR RISER & ROUND DRAIN BOX

Designed for our 12" and 20" round drainage boxes. These galvanized grates are often used in golf course, residential or light commercial applications. These grates are built to last!

Features:

- Galvanized grates are corrosion resistant
- Available in 12" or 20" diameters
- Fits Polylok 12" and 20" D-Boxes



4" ATRIUM VENT GUARD

The Vent Guard is designed to prevent animals, insects, and debris from clogging your vent pipes. It is available to fit 4" SCHD 40 and SDR 35 and does not disturb airflow in the vent pipe. The Vent Guard is simple to install and is the perfect solution to prevent clogged plumbing lines.

Features:

- Fits 4" SCHD 40 or SDR 35 Pipe
- Simple to install
- Guard into existing pipe
- No glue or screws required
- Low profile allows for it to blend in

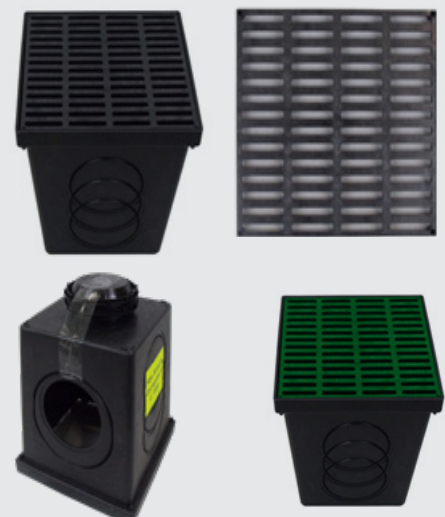


9" X 9" & 12" X 12" CATCH BASIN

Offered in two sizes, the basin comes complete with both a black or green grate, and two seals that accept 2", 3", 4", and corrugated pipe. You can choose your inlet and outlet heights, and it can accept one inlet and up to three outlets. Also available with Cast Iron Grates.

Features:

- Available in 9"x9" and 12"x12" configurations
- Precut with two inlet/outlet holes
- 12"x12" Cath Basins now fit 6" pipe
- Seals accept 2", 3", 4", and corrugated pipe
- Cast Iron grates available
- Designed to withstand normal abuse in landscaping applications



Quality – Service – Commitment – Delivered.

700 Goldman Drive, Cream Ridge, NJ 08514
Email trenchdrainsolutions@sigmaco.com
www.sigmaco.com

Drainage Products

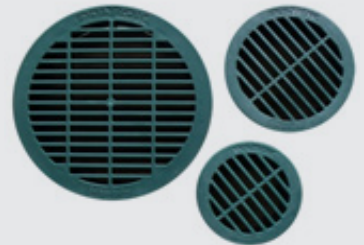
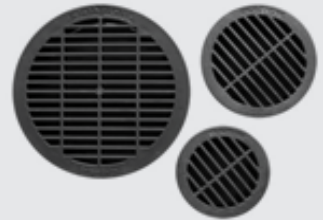
Innovations in Precast,
Drainage and Wastewater products

3", 4" & 6" ROUND GRATES

These round grates are designed to fit all pipe sizes with these diameters. They are manufactured in the United States using structural foam (HDPE). Ideal for residential or commercial applications.

Features:

- Available in Green or Black
- Available in 3", 4" and 6" diameters
- Fits Schedule 40, SDR 35 and corrugated pipe



Quality – Service – Commitment – Delivered.

700 Goldman Drive, Cream Ridge, NJ 08514
Email trenchdrainsolutions@sigmaco.com
www.sigmaco.com

Rev April 2018