

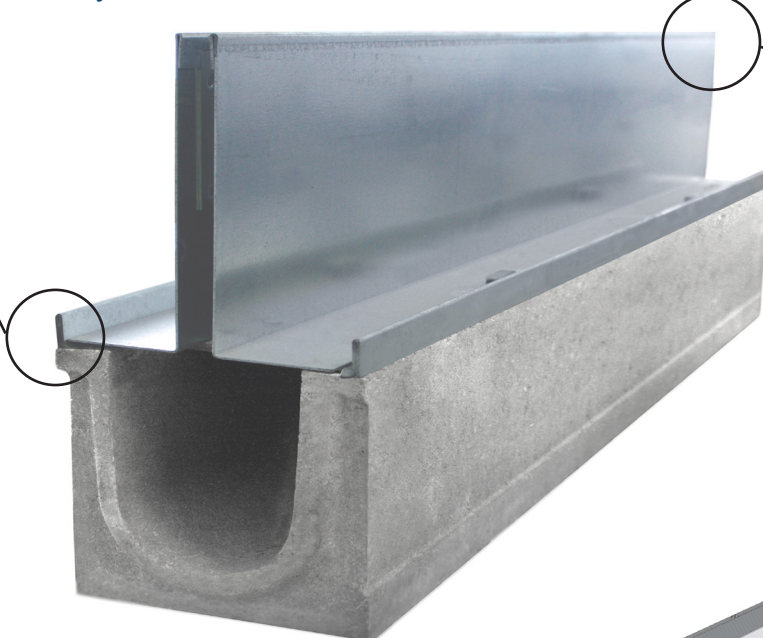
## TOP SLOT SYSTEM (Class A-C)



### Product Description

The TOP SLOT trench drain is a modular linear drain best utilized in pedestrian plazas and courtyards, swimming pools, running tracks and general commercial areas where the pavement is an integral design element to the overall project aesthetics. The Slot provides ample, discreet capture of your surface water run-off without taking away from key design focal points. The 4" wide channels are available in 39.37" and 19.69" lengths, both sloped and neutral depths and easily connected using the male and female joint profiles.

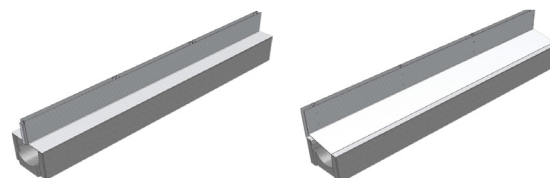
- Resessed Seat for Pavement Stability



- Guide Tabs for Quick & Easy Assembly



- Centric & Eccentric Slot Positioning



- Galvanized and Stainless Steel
- Standard & Custom Dimensions

### Areas of Application

- Running tracks & sports venues
- Pedestrian plazas
- Swimming pools
- Designed for use with brick/stone pavers

### Guide to Pre-Sloped Modular System

