



Quality – Service – Commitment – Delivered.

MAXI100



4" [100] WIDE THROAT TRENCH DRAIN SYSTEM WITH DUCTILE IRON FRAME

Dimensional Data (inches and [mm]) are Subject to Manufacturing Tolerances and Change Without Notice

ENGINEERING SPECIFICATION: HYDROTEC MAXI100 Channels shall be 39.37" [1000] long, 6.22" [158] wide reveal and have a 3.94" [100] wide throat. Modular channel sections shall be made of fiber-reinforced concrete C35/45. Shall have a male/female connection between channel sections that will not separate during the installation. Channels shall have a radiused self-cleaning bottom and 0.5% or neutral 0% built in slope. Channels shall have Ductile Iron Edge Rails built into the fiber-reinforced concrete. Channels shall have all grates locked down as per HYDROTEC's patented locking mechanism whereby the polyamide rod is pushed and locked underneath the grate.

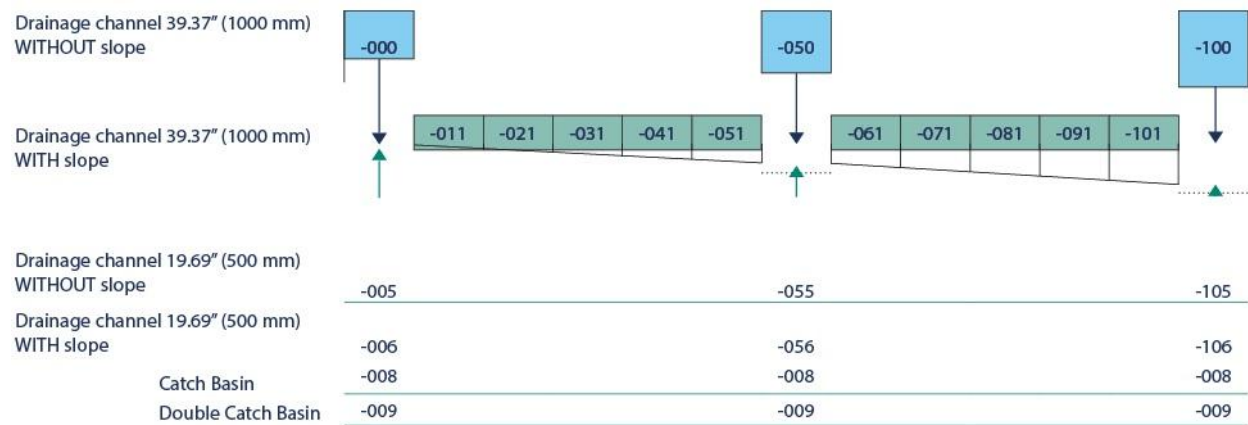
MAXI 3.94" [100] wide throat **Ductile Iron ADA Grate is rated class C** per the DIN EN1433 top load classifications. Ductile Iron conforms to ASTM specification A536-84, Grade 80-55-06. Supplied in 39.37" [1000] or 19.69" [500] nominal lengths with 4.72/0.55 [120/14] wide slots. Grate has an open area of 26.08 sq. in per ft. [55206 sq.mm per meter].

MAXI 3.94" [100] wide throat **Ductile Iron ADA Grate is rated class D** per the DIN EN1433 top load classifications. Ductile Iron conforms to ASTM specification A536-84, Grade 80-55-06. Supplied in 39.37" [1000] or 19.69" [500] nominal lengths with 1.02/0.47 [26/12] wide slots. Grate has an open area of 24.18 sq. in per ft. [51200 sq.mm per meter].

MAXI 3.94" [100] wide throat **Ductile Iron Mesh Grate is rated class E** per the DIN EN1433 top load classifications. Ductile Iron conforms to ASTM specification A536-84, Grade 80-55-06. Supplied in 39.37" [1000] or 19.69" [500] nominal lengths with 1.18/1.1 [29.9/27.4] wide slots. Grate has an open area of 29.29 sq. in per ft. [62000 sq.mm per meter].

MAXI 3.94" [100] wide throat **Ductile Iron ADA Grate is rated class F** per the DIN EN1433 top load classifications. Ductile Iron conforms to ASTM specification A536-84, Grade 80-55-06. Supplied in 39.37" [1000] or 19.69" [500] nominal lengths with 1.02/0.47 [26/12] wide slots. Grate has an open area of 24.18 sq. in per ft. [51200 sq.mm per meter].

Guide to Pre-Sloped Modular System



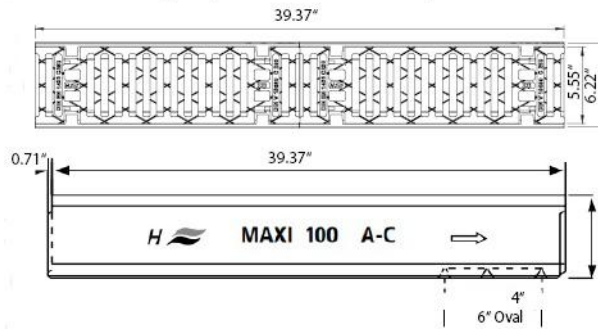
MAXI100 Parts Guide

Product Description	With Ductile Iron ADA Class C Grate Part No.	Weight Lbs	With Ductile Iron ADA Class D Grate Part No.	Weight Lbs	With Ductile Iron Mesh Class E Grate Part No.	Weight Lbs	With Ductile Iron ADA Class F Grate Part No.	Weight Lbs	'A' Shallow Invert Inches [mm]	'B' Shallow Invert Inches [mm]
Neutral Channel 39.37" (1m)	CHG61131-000	99.21	CHG61140-000	112.44	CHG62150-000	112.44	CHG61160-000	112.44	6.30"[160]	6.30"[160]
Neutral Channel 19.69" (0.5m)	CHG61131-005	54.01	CHG61140-005	51.81	CHG62150-005	51.81	CHG61160-005	51.81	6.30"[160]	6.30"[160]
M1 Sloped Channel 39.37" (1m)	CHG61131-011	98.11	CHG61140-011	106.92	CHG62150-011	106.92	CHG61160-011	113.54	6.30"[160]	6.50"[165]
M2 Sloped Channel 39.37" (1m)	CHG61131-021	98.11	CHG61140-021	109.13	CHG62150-021	109.13	CHG61160-021	115.74	6.50"[165]	6.69"[170]
M3 Sloped Channel 39.37" (1m)	CHG61131-031	98.11	CHG61140-031	111.33	CHG62150-031	111.33	CHG61160-031	117.95	6.69"[170]	6.89"[175]
M4 Sloped Channel 39.37" (1m)	CHG61131-041	99.21	CHG61140-041	112.44	CHG62150-041	112.44	CHG61160-041	120.15	6.89"[175]	7.09"[180]
M5 Sloped Channel 39.37" (1m)	CHG61131-051	101.41	CHG61140-051	114.64	CHG62150-051	114.64	CHG61160-051	122.36	7.09"[180]	7.28"[185]
Neutral Channel 39.37" (1m)	CHG61131-050	108.03	CHG61140-050	122.36	CHG62150-050	122.36	CHG61160-050	122.36	7.28"[185]	7.28"[185]
Neutral Channel 19.69" (0.5m)	CHG61131-055	51.81	CHG61140-055	58.42	CHG62150-055	58.42	CHG61160-055	58.42	7.28"[185]	7.28"[185]
M6 Sloped Channel 39.37" (1m)	CHG61131-061	103.62	CHG61140-061	116.84	CHG62150-061	116.84	CHG61160-061	124.56	7.28"[185]	7.48"[190]
M7 Sloped Channel 39.37" (1m)	CHG61131-071	106.92	CHG61140-071	120.15	CHG62150-071	120.15	CHG61160-071	126.77	7.48"[190]	7.68"[195]
M8 Sloped Channel 39.37" (1m)	CHG61131-081	108.03	CHG61140-081	121.25	CHG62150-081	121.25	CHG61160-081	128.97	7.68"[195]	7.87"[200]
M9 Sloped Channel 39.37" (1m)	CHG61131-091	111.33	CHG61140-091	124.56	CHG62150-091	124.56	CHG61160-091	131.18	7.87"[200]	8.07"[205]
M10 Sloped Channel 39.37" (1m)	CHG61131-101	114.64	CHG61140-101	127.87	CHG62150-101	127.87	CHG61160-101	133.38	8.07"[205]	8.27"[210]
Neutral Channel 39.37" (1m)	CHG61131-100	119.05	CHG61140-100	133.38	CHG62150-100	133.38	CHG61160-100	133.38	8.27"[210]	8.27"[210]
Neutral Channel 19.69" (0.5m)	CHG61131-105	54.01	CHG61140-105	49.60	CHG62150-105	59.52	CHG61160-105	49.60	8.27"[210]	8.27"[210]
Neutral Channel 39.37" (1m)	NA	NA	CHG61140-150	137.79	CHG62150-150	137.79	CHG61160-150	137.79	9.25"[235]	9.25"[235]
Neutral Channel 19.69" (0.5m)	NA	NA	CHG61140-155	68.34	CHG62150-155	68.34	CHG61160-155	68.34	9.25"[235]	9.25"[235]
Neutral Channel 39.37" (1m)	NA	NA	CHG61140-200	143.30	CHG62150-200	143.30	CHG61160-200	143.30	10.23"[260]	10.23"[260]
Neutral Channel 19.69" (0.5m)	NA	NA	CHG61140-205	71.65	CHG62150-205	71.65	CHG61160-205	71.65	10.23"[260]	10.23"[260]
Catch Basin 19.69" (0.5m)	CHG61131-008	109.13	CHG61140-008	114.64	CHG62150-008	114.64	CHG61160-008	114.64	19.69"[500]	19.69"[500]

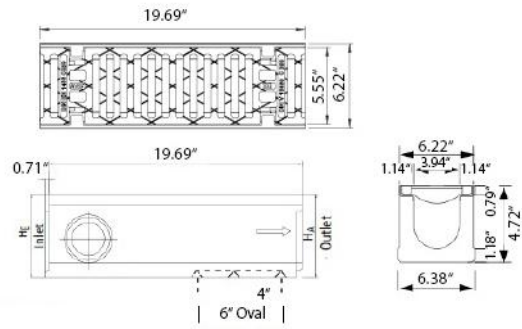
ACCESSORIES MAXI100	Part. No
Closed End Cap for All MAXI100 (2 Parts: Plastic Support + Galvanized Steel Cap)	CHG70011-10
Closed End Cap for 6.30" MAXI100 (1 Iron Part)	CHG70011-11
Closed End Cap for 7.28" MAXI100 (1 Iron Part)	CHG70011-12
Open End Cap for All MAXI100 with Connection to 4" Pipe (2 Parts: Plastic Support + Galvanized Steel Cap)	CHG70011-20
4" Pipe Connection (PVC) for all MAXI100	CHG70021-00
6" Pipe Connection (PVC) for all MAXI100	CHG70021-60

MAXI100 with Ductile Iron ADA Load Class C (Part No. CHG61131-*)

Channel with 2 grates, water intake area 85.87 sq. ins

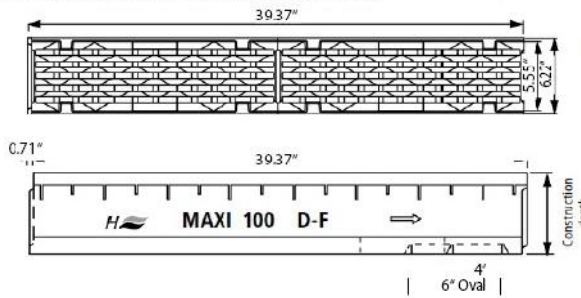


Water Intake area 42.93 sq. ins.

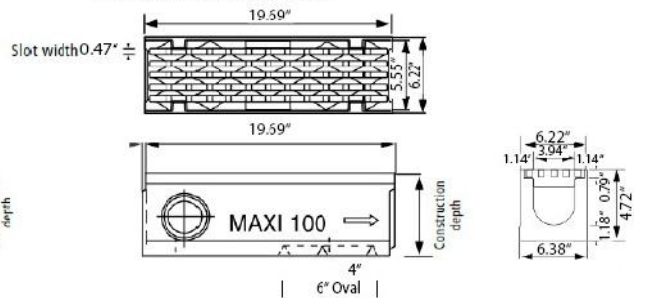


MAXI100 with Ductile Iron ADA Load Class D (Part No.CHG61140-*) and ADA Load Class F (Part No.CHG61160-*)

Channel with 2 grates, water intake area 79.36 sq. ins

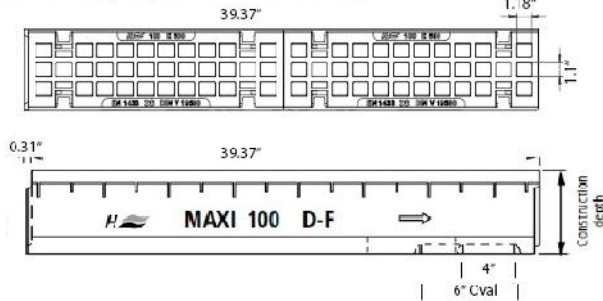


Water intake area 39.68 sq. ins

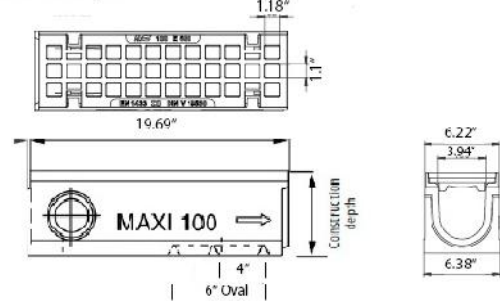


MAXI100 with Ductile Iron Class E Grate: Part No. CHG62150-*

Channel with 2 grates, water intake area 96.10 sq. ins



Water intake area 48.05 sq. ins



Catch Basin and End Caps for All MAXI100

