

LOCATIONS

Northeast Region

700 Goldman Drive
Cream Ridge, NJ 08514
Phone (800) 999-2550
Fax (609) 758-1158
crmcsr@sigmaco.com

REPCO

970 DE LA Bastican
Victoriaville, Quebec G6T 1Y2
Phone (888) 744-6262
Fax (819) 758-1153
jboucher@repco.ca

Concord Supply

2353 Bowman Street
Innisfil, Ontario L9S 3V6
Phone (877) 436-3800
Fax (705) 436-6338
tanya@concordsupply.ca

Midwest Region

21699 Torrence Avenue
Sauk Village, IL 60411
Phone (888) 999-0420
Fax (708) 758-6790
chicsr@sigmaco.com

Southeast Region

1500 Highway 22 W
Alexander City, AL 35010
Phone (800) 824-4513
Fax (256) 234-4956
alxcsr@sigmaco.com

Southwest Region

5000 Askins Lane
Houston, TX 77093
Phone (800) 999-0109
Fax (281) 987-0200
htncsr@sigmaco.com

Western Region

4652 E. Guasti Road
Ontario, CA 91761
Phone (800) 688-6230
Fax (909) 391-2033
ontcsr@sigmaco.com

Auburn, Washington (Branch)

902 W Main Street
Auburn, WA 98001
Phone (800) 688-6230
Fax (909) 391-2033
ontcsr@sigmaco.com

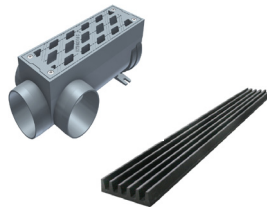
Whether your project is a residential driveway, commercial parking lot, industrial warehouse or international airport, Sigma has a trench drain solution to ensure your drainage needs are met. Sigma offers a wide range of modular channels and grates for fast, efficient removal of surface fluid runoff while withstanding the heaviest and most dynamic load forces. All of our systems are designed to achieve optimum performance while being easy and inexpensive to install by comparison to competing systems. Sigma also offers a full suite of Technical Services in support our systems, ensuring compliance with the project design parameters.

Hydrotec Fiber Reinforced Concrete Trench Drains



- 10 Manufacturer Warranty
- 4", 6", 8", 12" and 16" wide channels
- Sloped Channels (4" and 6" systems)
- Up to Load Class F.
- Variable installation techniques
- Boltless patented locking mechanism
- ADA Compliant

Hydrotec Ductile Iron Trench Drains



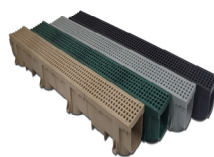
- 10 Year Manufacturer Warranty
- 4", 6", 8" and 12" wide channels
- Up to Load Class F.
- Best in Class Durability
- Vandal Resistant, Rattle Free
- Water Tight/Sealed System (HYDROBlock)
- Simple, low cost installation

SIGMA Stainless Trench Drains



- Ultimate Corrosion Resistance
- 304 and 316 Grade Stainless
- Up to Load Class F
- Fully Customizable
- NSF Certified
- Meets FDA Standards
- Slot and Removable Grates Available

Polylok Drainage Products



- 4' Long Channels
- Up to Load Class C
- Excellent Corrosion Resistance
- Black, Tan, Green and Grey Channels/Grates
- Reversible Plastic Grates
- Ductile Iron Grate Available
- Sump Boxes and Catch Basins

Galvanized Steel Trench Drains



- Up to Load Class D
- 3 Separate Neutral Depths Available
- Light Weight Channels
- Shatter Proof Channels
- 2 Meter Channel Lengths

www.sigmaco.com