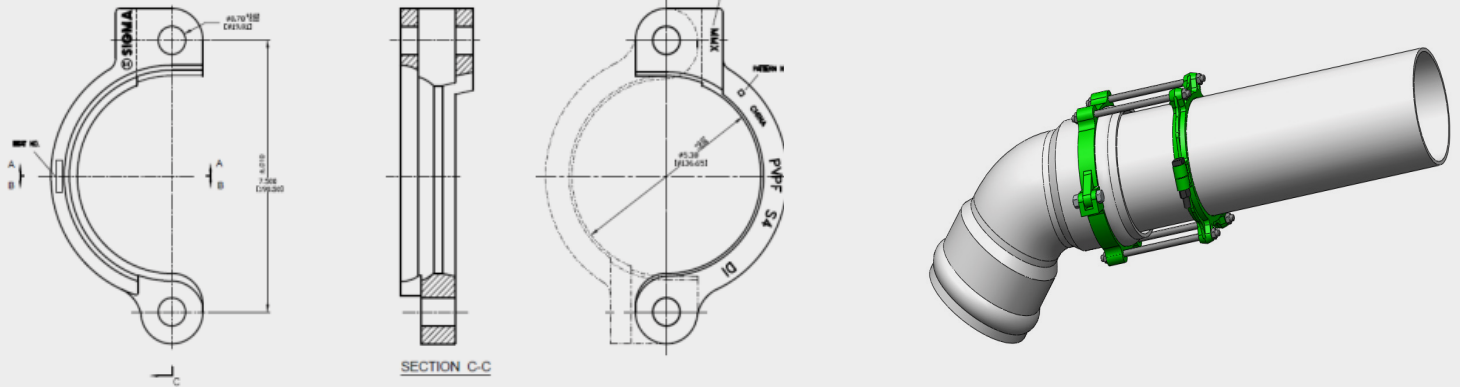
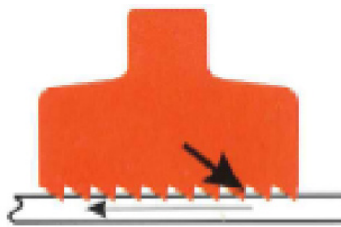


# PV-LOK™ Series PVPF for PVC Fitting Restraint (IPS)



## Feature & Advantages:

The PV-LOK™ Series PVPF restrainer incorporates a series of machined serrations that effectively engage PVC pipe walls, to provide positive joint security and full support of the pipe. The directional gripping action maximizes restraint during increased line pressures such as those resulting from surges and water hammers. The Series PVPF incorporates a PV-LOK clamping ring, restraining rods, and two piece beveled back up ring for the PVC fitting to provide the necessary joint restraint.



Cross Section of PV-LOK illustrates directional grip of serrations to maximize restraint of PVC pipe.

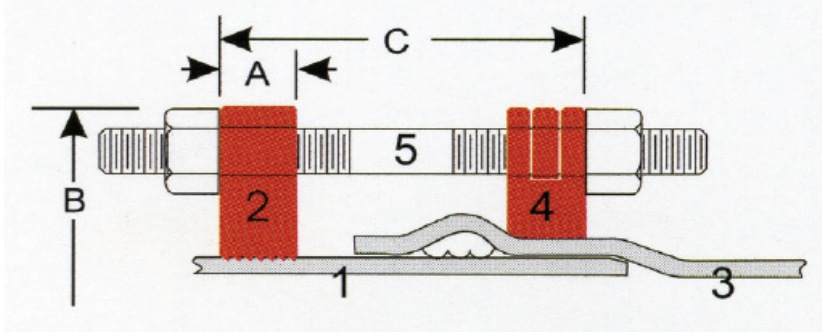
## Sample Specification:

Restraint devices for joining plain end PVC pipe to gasketed PVC pressure fittings shall consist of a split clamping ring that incorporates a series of machined serrations (not “as cast”), providing positive restraint, exact fit and full support of the pipe wall. Restraining rods and nuts shall connect the restrained pipe end to a two-piece, beveled backup ring that seats comfortably behind the PVC gasketed fitting bell. In applicable sizes, the interlocking ear or two piece design on the back-up ring shall provide tongue-and-groove seating to eliminate flexing under increased pressure and surges. In applicable sizes, the multi-part back-up ring shall utilize side clamping bolts to assemble behind the fitting bell. Devices shall carry a minimum 2:1 safety factor and meet or exceed the recognized testing standards for restrained joints on PVC pressure pipe and offer factory certification and independent test results. Restraint devices for joining PVC pipe to PVC gasketed pressure fittings shall be SIGMA PV-LOK™ Series PVPF or approved equal.

# PV-LOK™ Series PVPF for PVC Fitting Restraint (IPS)

## Material:

- Serrated Clamping Ring and beveled backup ring: ASTM A536 65-45-12 ductile iron.
- Side Clamping Bolts and Hex Nuts: ASTM A449 high strength steel, zinc-plated.
- Restraining Rods and Hex Nuts: High strength low alloy steel (AWWA/ANSI C111/A21.11) 45,000 psi yield / 60,000 psi tensile.

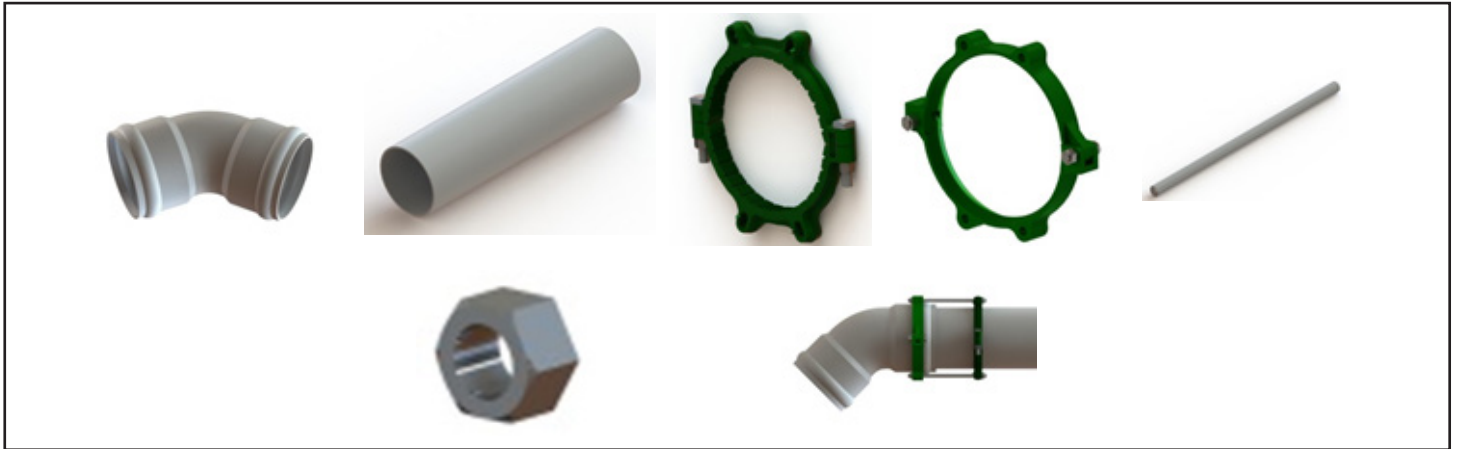


1. PLAIN END PVC PIPE
2. PV-LOK RESTRAINER CLAMP
3. PVC FITTING BELL
4. PVPF BEVELLED BACK UP RING
5. RESTRAINING ROD

## Dimensions in Inches, Weights in Pounds:

Nominal Pipe Size	Part #	Wgt	PVC Pipe OD IPS	DIMENSIONS			BACK UP RING		SERRATED RING				HARDWARE				
				A	B	C	Part #	Qty	Part #	Qty	Clamping Bolt Size	Qty	Clamping Bolt Torque	Restr Rods Size	Qty	Nut Size	Qty
2	PVPF-S2	12.0	2.375	1.30	6.44	10.0	PVPF-S2R	1	PV-S2	1	5/8 x 4.0	2	85 ft-lbs	5/8 x 12	2	5/8	4
3	PVPF-S3	14.0	3.5	1.30	7.82	10.0	PVPF-S3R	1	PV-S3	1	5/8 x 4.0	2	85 ft-lbs	5/8 x 12	2	5/8	4
4	PVPF-S4	13.5	4.50	1.25	9.13	10.0	PVPF-S4R	1	PV-S4	1	5/8 x 4.0	2	85 ft-lbs	3/4 x 12	2	3/4	4
6	PVPF-S6	17.0	6.63	1.25	11.75	10.0	PVPF-S6R	1	PV-S6	1	5/8 x 4.0	2	85 ft-lbs	3/4 x 12	2	3/4	4
8	PVPF-S8	24.0	8.63	2.00	14.13	10.0	PVPF-S8R	1	PV-S8	1	3/4 x 4.5	2	100 ft-lbs	3/4 x 12	2	3/4	4

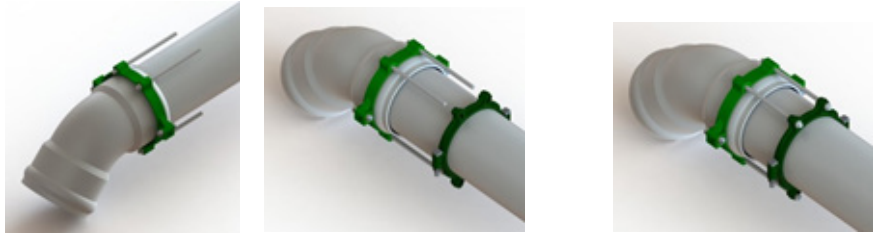
PV-LOK products are rated with a working pressure equal to that of the PVC pipe to which they are applied.

**Installation instructions PVPF-S**


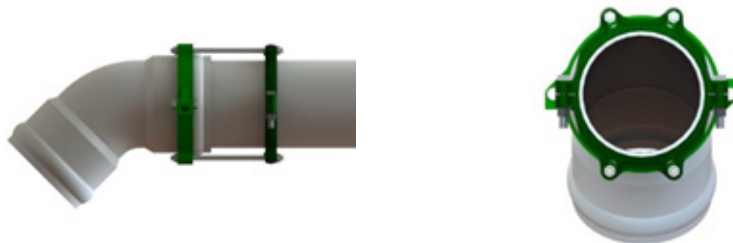
1. Assemble the plain end PVC pipe & PVC fitting according to the manufacturer's installation instruction. Install the beveled backup ring (non - serrated, two-piece interlocking ring) set behind the gasketed bell of the PVC fitting, allowing the ring to seat evenly against the fitting bell. Direction of the ring to be installed to be observed from the arrows in the sticker glued on the ring.



2. Insert the restrainer rods from the back of the two-piece ring ear toward the pipe and mark a reference line approximately 2 inches from the rod end, maintaining the "C" dimension. Install the serrated clamping ring (PV-LOK) at this mark, making sure the protrusions on the restrainer ears face toward the fitting bell to ensure proper direction of the angled serrations (Please read the arrows in the sticker). Tighten the clamping bolts to recommended torque.



3. Insert the restrainer nuts provided and snug tight the nuts on both the beveled backup ring and the serrated clamping ring. Do not over-tighten retaining nuts, approximately one turn with a wrench.



## LOCATIONS

### Northeast Region

#### Cream Ridge, New Jersey (HQ)

700 Goldman Drive  
Cream Ridge, NJ 08514  
Phone (800) 999-2550  
Fax (609) 758-1158  
crmcsr@sigmaco.com

### REPCO

395 Boul. Labbé Nord  
Victoriaville, Qc G6P 1B1  
Phone (888) 744-6262  
Fax (819) 758-1153  
jboucher@repco.ca

### Concord Supply

2353 Bowman Street  
Innisfil, Ontario L9S 3V6  
Phone (877) 436-3800  
Fax (705) 436-6338  
tanya@concordsupply.ca

### Midwest Region

#### Sauk Village, Illinois

21699 Torrence Avenue  
Sauk Village, IL 60411  
Phone (888) 999-0420  
Fax (708) 758-6790  
chicsr@sigmaco.com

### Southeast Region

#### Alexander City, Alabama

1500 Highway 22 W  
Alexander City, AL 35010  
Phone (800) 824-4513  
Fax (256) 234-4956  
alxcsr@sigmaco.com

### Southwest Region

#### Houston, Texas

5000 Askins Lane  
Houston, TX 77093  
Phone (800) 999-0109  
Fax (281) 987-0200  
htncsr@sigmaco.com

### Western Region

#### Ontario, California

4652 E. Guasti Road  
Ontario, CA 91761  
Phone (800) 688-6230  
Fax (909) 391-2033  
ontcsr@sigmaco.com

### Auburn, Washington (Branch)

902 W Main Street  
Auburn, WA 98001  
Phone (800) 688-6230  
Fax (909) 391-2033  
ontcsr@sigmaco.com

[www.sigmaco.com](http://www.sigmaco.com)

Terms and Conditions of Sales available at our website.

## AWWA Ductile Iron Fittings



- 2-64" C153 Ductile Iron Mechanical Joint Fittings
- 2-48" C110 Ductile Iron Mechanical Joint Fittings
- 2-64" C110 Ductile Iron Flanged Fittings
- 3-24" C153 Ductile Iron Push-On Fittings
- 4-24" C110 Ductile Iron Push-On Fittings
- 3-36" Ductile Iron Mechanical Joint Connector
- C116 Fusion Bonded Epoxy Lining Available
- PROTECTO 401® Ceramic Epoxy Lining Available

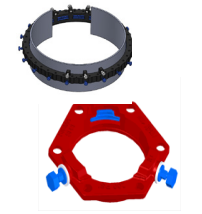
Visit our website for available special coatings. <http://www.sigmaco.com/fittings-coatings-linings/>

## Mechanical Joint Accessories



- Prepackaged and Loose Mechanical Joint Accessories
- SIGMASEAL™ Improved Mechanical Joint Gasket
- Snap-On Multi-Purpose Gasket for Ductile Iron or PVC Pressure Pipes
- OMNI-SLEEVE™ Improved Wall Penetration Sleeve
- Specialty Bolts and Nuts for Mechanical Joint Assemblies

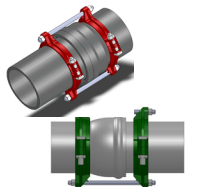
## ONE-LOK™ Wedge Action Restraints



- 4-48" ONE-LOK D-SLDE Domestic Wedge Restraint for Ductile Iron Pipe
- 3-64" ONE-LOK SLDE Wedge Restraint for Ductile Iron Pipe (Import)
- 4-48" ONE-LOK T-SLDE Tandem Wedge Restraint for High Pressure Ductile Iron Pipe
- 3-36" ONE-LOK D-SLCE Domestic Wedge Restraint for PVC Pipe
- 3-12" ONE-LOK SLC Wedge Restraint for PVC Pipe (Import)
- 3-60" ONE-LOK SLCE Wedge Restraint for PVC Pipe (Import)
- 3-42" ONE-LOK SLDEH Wedge Harness Restraint for Ductile Iron Pipe
- 4-12" /16" /20" ONE-LOK SLDM Wedge Restraint for Oversized Cast Iron Pipe
- 4-48" ONE-LOK SSLD Split Wedge Restraint for Installed Ductile Iron Pipe & Fitting
- 4-36" ONE-LOK SSLDH Split Wedge Harness Restraint for Installed Ductile Iron Pipe
- 4-12" ONE-LOK SLCEH Wedge Harness Restraint for AWWA C900 PVC Pipe

Visit our website for available special coatings. <http://www.sigmaco.com/pipe-restraint-product-coatings-linings/>

## PV-LOK™ Serration Lock Restraints



- 4-48" PV-LOK PWM Serrated Restraint for Ductile Iron Fitting & AWWA C900/905 PVC Pipe
- 4-48" PV-LOK PWP Serrated Bell Joint Restraint for AWWA C900/905 PVC Pipe
- 4-12" PV-LOK D-PWP Domestic Serrated Bell Joint Restraint for AWWA C900 PVC Pipe
- 4-12" PV-LOK PVPF Restraint for AWWA C900/905 PVC Pipe & PVC Fitting
- 4-12" PV-LOK PWH Serrated Harness Restraint for AWWA C900 PVC Pipe
- 2-12" PV-LOK PVM Serrated Restraint for Ductile Iron & IPS OD PVC pipe
- 2-12" PV-LOK PVP Serrated Bell Joint Restraint for IPS OD PVC Pipe
- 2-8" PV-LOK PVPF Serrated Restraint for IPS OD PVC Pipe & PVC Fitting
- 4-12" PV-LOK PWP Serrated Bell Joint Restraint for Ductile Iron Pipe

Visit our website for available special coatings. <http://www.sigmaco.com/pipe-restraint-product-coatings-linings/>

## HDPE (Raven) Products



- Rotational Molding Meter Boxes & Pits
- Optional White Interior Available
- Light & Medium Duty Load Capacities
- Extensive Nationwide Inventory
- Rotational Molding Oil-Water Separators
- OEM Service Available

## Municipal Construction Castings



- Manhole Rings and Covers
- Curb and Meter Boxes
- Frames and Grates
- Storm Inlets
- Valve Boxes, Risers, and Extensions

## Products for the Ductile Iron Fabricator



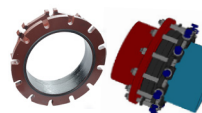
- 3-64" High Hub Threaded Flanges
- 3-48" Tapped High Hub Threaded Flanges
- 3-36" Extra Heavy 250lb Drilled Threaded Flanges
- 3-48" Threaded MJ Bell Adapters
- 3-48" MJ x PE Bell adapter
- 3-48" Anchor Flanges
- 3-16" Filler Flanges

## Extended Range Products



- Flange-Pak™ Prepackaged Flange Accessory Sets
- Polyethylene Encasement for Ductile Iron Pipe
- Copper Tubing Products
- Tracer Wire & Detectable/Non-Detectable Marking Tape
- Pipe Joint Lubricant & Hydraulic Cement
- Socket Clamps and Tie Rod Accessories
- Boxlok Valve Box Alignment Device
- Cast Iron Companion Flanges

## Flange Adapters



- 3-36" SIGMAFLANGE Flange Adapter Sleeve for PVC and Ductile Iron Pipe
- 2-48" ZIP FLANGE Set Screw Style Flange Adapter
- 3-36" SIGMAFLANGE Universal Joint for Flanged Fittings, Flanged Pipes & Valves