

C153 DUCTILE IRON PUSH-ON FITTINGS

Project Name: Engineer:	Contractor: Spec Section:	Date
--	--	-------------

Optional Specifications

Gaskets	Coating
SBR <i>(In accordance with ANSI/AWWA C111/A21.11)</i>	Asphaltic Seal Coat <i>(In accordance with ANSI / AWWA C104/A21.04 and ANSI / AWWA C153/A21.10)</i>
EPDM	Fusion Bonded Epoxy (FBE)*Interior and exterior <i>(In accordance ANSI / AWWA C116/A21.16)</i>
Neoprene	Zinc <i>(In accordance with ISO 8179-2)</i>
Nitrile	Others- Specify
Others -Specify	
Lining	
Cement-Mortar *Double thickness with asphaltic coating <i>(In accordance with ANSI/AWWA C104/A21.4)</i>	
Fusion Bonded Epoxy (FBE)*Interior and exterior <i>(In accordance with ANSI/AWWA C116/A21.16)</i>	
Protecto 401 Ceramic Epoxy	
Others- Specify	



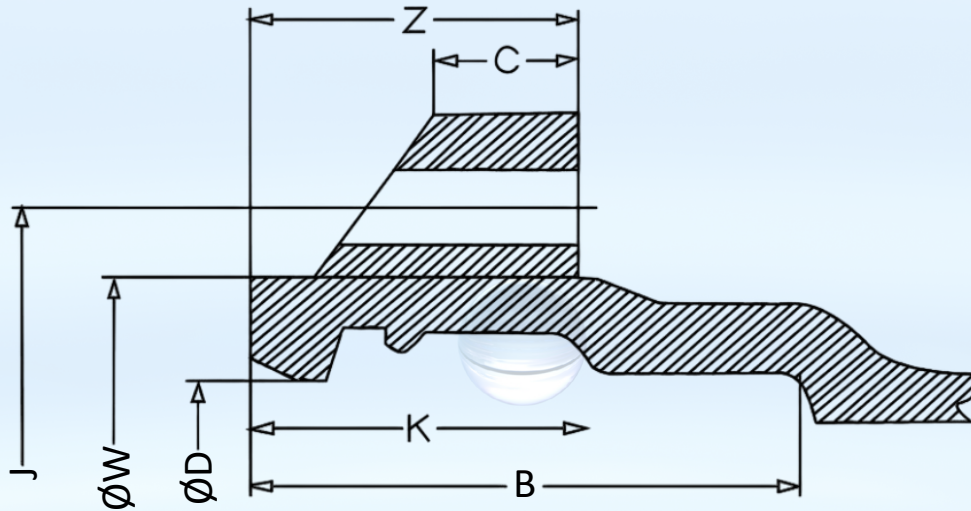
WATER QUALITY
Certified to ANSI/NSF
Standards 61 and 372



Product Specifications

Material:	Ductile Iron ASTM A536 Grade 60-42-10, 65-45-12 or 70-50-05
Pressure Rating:	350 PSI Water Working Pressure 4"-24"
Testing:	In accordance with ANSI/AWWA 153/A21.53 & UL-FM Requirements. Hydrostatically Tested in accordance with SIGMA Quality Management Standard.
Traceability:	All fittings are heat coded to ensure traceability and verification of metallurgical properties in accordance with SIGMA Quality Management Standards.
Size Range:	4" - 24"
Laying Length:	Short body design - straight section of body deleted to provide a compact and lighter fitting without reducing strength or flow characteristics. In accordance with ANSI/AWWA C153/A21.53. Non-Standard items will be as per SIGMA design.
Deflection:	Up to 5 degrees
Joint:	TRIM TYTON JOINT® push-on bell joint design, manufactured by SIGMA under license from the US Pipe and Foundry Company.
Approvals:	4"-12" Underwriters Laboratories listed and Factory Mutual Approved. UL/NSF61 & 372
Standards	ANSI/AWWA C111/A21.11 and ANSI/AWWA C153/A21.53 for Ductile Iron Fittings 4" – 24" for water and other liquids. NSF61, Annex G & 372
Installations:	Per ANSI/AWWA C600 and C111 using DIP conforming to C150/C151 and PVC pipe conforming to C900/C905.

C153 DUCTILE IRON PUSH-ON FITTINGS



TYTON JOINT® Bell Specifications for C153 Iron Push-On Fittings

Size	ØD	J	ØD	K	B	Z	C
4	6.48	7.68	4.91	1.91	4.00	2.12	0.88
6	8.66	9.81	7.01	2.04	4.00	2.12	0.88
8	10.94	12.06	9.17	2.53	4.50	2.75	1.00
10	13.03	14.12	11.22	2.73	5.00	2.88	1.25
12	15.17	16.50	13.32	3.15	5.00	3.00	1.12
14	17.88	19.06	15.51	3.15	6.00	3.50	1.12
16	20.04	21.25	17.51	3.15	6.00	3.50	1.12
18	22.34	23.50	19.61	3.15	6.00	3.12	1.25
20	24.46	25.75	21.71	3.15	6.00	3.12	1.25
24	28.78	30.09	25.91	3.15	6.00	3.12	1.25

All dimensions are in inches