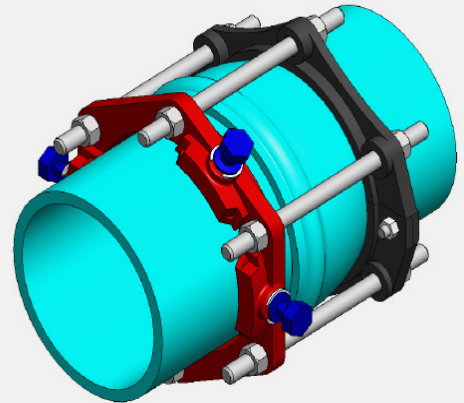
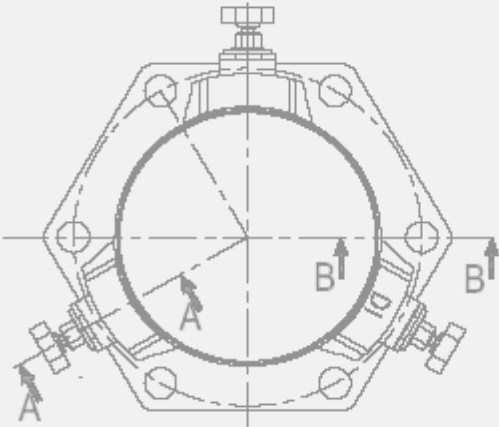


ONE-LOK™ MODEL SLCEH WEDGE HARNESS RESTRAINT FOR AWWA C900 PVC PIPE



PRODUCT SPECIFICATIONS

- MATERIAL:**
- Gland body, wedge inserts, break-off top actuating bolts and split non-serrated back-up ring are manufactured of high strength ductile iron in accordance with ASTM A536, Grade 65-45-12.
- SIZE RANGE:**
- 4" through 12"
- DIMENSION:**
- Manufactured in accordance with AWWA C900 PVC pipe
- PRESSURE RATINGS:**
- Equal to the water working pressure rating of the pipe upon which it is installed with a minimum 2:1 factor of safety.
- COATING:**
- Asphaltic black enamel
 - Electro-deposition "CORRSAFE™" available upon request. For further information, please refer to our CORRSAFE Product Information sheet at <http://www.sigmaco.com/pipe-restraint-product-coatings-linings/>
- DEFLECTION:**
- Maintains the allowable nominal deflection within the PVC pipe manufacturer's recommendation for AWWA C900 PVC pipe bells.
- TRACEABILITY:**
- Gland body, wedge inserts, break-off top actuating bolts and split non-serrated back-up ring are individually cast with exact heat code information.
- INSTALLATION:**
- In accordance with manufacturer's recommendation and applicable AWWA standards.