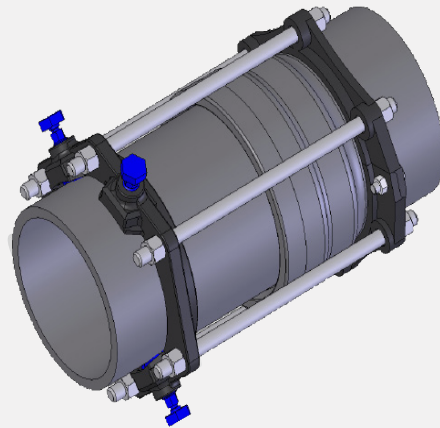
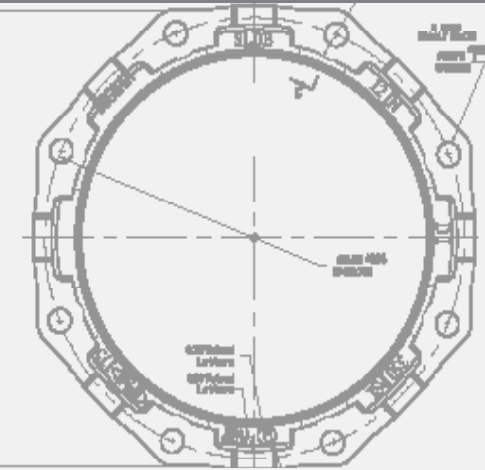


ONE-LOK™ MODEL SLDEH WEDGE HARNESS RESTRAINT FOR DUCTILE IRON PIPE



PRODUCT SPECIFICATIONS

- MATERIAL:**
- Gland body, wedge inserts, break-off top actuating bolts and split back-up ring are manufactured of high strength ductile iron in accordance with ASTM A536, Grade 65-45-12.
 - Wedge inserts are heat-treated to a hardness of 370 BHN minimum.
- SIZE RANGE:**
- 3" through 42"
- DIMENSION:**
- Conform to ANSI/AWWA C151/A21.51 standard
- PRESSURE RATINGS:**
- Sizes 3"-16" carry a 350 psi WWP, sizes 18"-36" carry a 250 psi WWP and 42" carry a 200 psi WWP while providing a minimum 2:1 factor of safety.
- COATING:**
- Asphaltic black enamel
 - Electro-deposition "CORRSAFE™" available upon request. For further information please refer to our CORRSAFE Product Information sheet at: <http://www.sigmaco.com/download/corrsafe-alternative-coating-for-enhanced-exterior-corrosion-protection-on-wedge-and-serration-type-restrainers/>
- APPROVALS:**
- Wedge glands are Underwriters Laboratories' Listed in sizes 3" – 36" and Factory Mutual approved in sizes 3" – 12". Split glands are Underwriters Laboratories' Listed & Factory Mutual approved in sizes 3"-16".
- DEFLECTION:**
- 5° for 3"-12", 2° for 14"-16", 1-1/2° for 18"-24" and 1° for 30"-48"
- TRACEABILITY:**
- Gland body, wedge inserts, break-off top actuating bolts and split back-up ring are individually cast with exact heat code information.
- INSTALLATION:**
- In accordance with manufacturer's recommendation and applicable AWWA standards.