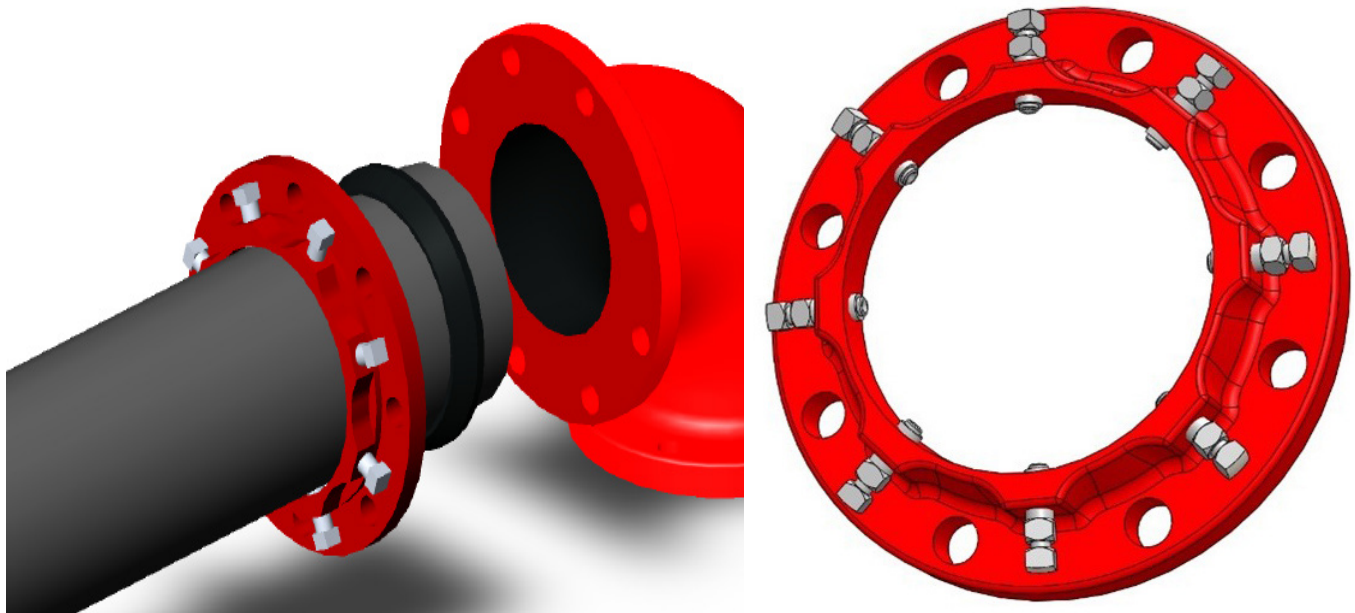


ZIP FLANGE FIELD INSTALLED FLANGE ADAPTER

Connects Plain End Ductile Iron or Steel Pipe to Flanged Fittings, Pumps, Valves ...



**ZIP FLANGE is manufactured to
American National Standards Institute
(ANSI) specification ANSI B16.1**



ZIP FLANGE FIELD INSTALLED FLANGE ADAPTER

FLANGE

Manufactured from Ductile Iron - ASTM A536, Grade 65-45-12. Drilling to ANSI B16.1 - 125lb.

SET SCREWS

Manufactured from AISI 4140 steel.

Heat Treated and Zinc Plated.

Break off Top set screws for FM approved Zip Flanges.

GASKET

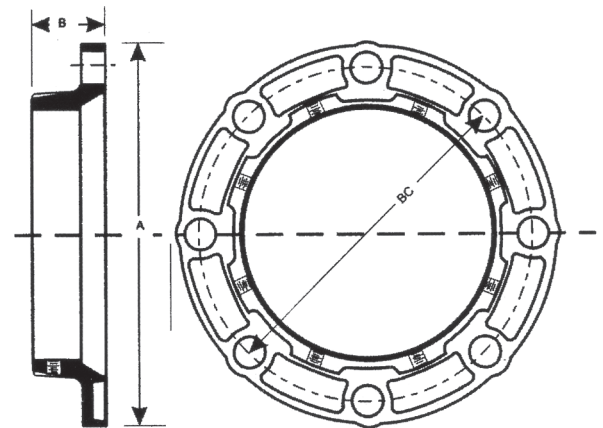
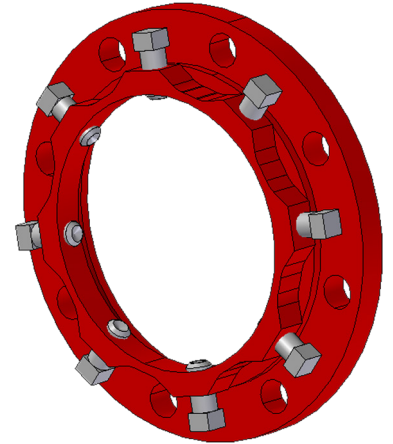
Standard Gasket supplied with SIGMA ZIP FLANGE is SBR (BUNA-S), suitable for water, wastewater, and most moderate chemicals. Temperature range: -10 - 160 degrees Fahrenheit.

Alternative Gaskets include:

EPDM - Green: -10 to 250°F (Ethylene Propylene)

CR - Yellow: -10 to 225°F (Neoprene)

NBR - Orange: 20 to 180°F (Buna-N, Nylril, Hycar)



ZF2 Series - STANDARD (2-8" 200psi / 10-12" 175psi)

Pipe Size	for Cast Iron Pipe		for Steel Pipe		A	B	BC	Bolt Hole Diameter	Set Screw		Weight
	Item No.	Pipe O.D.	Item No.	Pipe O.D.					No.	Size	
2	ZF2-C2	2.50	ZF2-S2	2.375	6	1 4/5	4 3/4	3/4	2	1/2 X 1	4
3	ZF2-C3	3.96	ZF2-S3	3.500	7 1/2	1 4/5	6	3/4	4	1/2 X 1	5
4	ZF2-C4	4.80	ZF2-S4	4.500	9	1 7/8	7 1/2	3/4	4	1/2 X 1	8
6	ZF2-C6	6.90	ZF2-S6	6.625	11	1 7/8	9 1/2	7/8	8	1/2 X 1	10
8	ZF2-C8	9.05	ZF2-S8	8.625	13 1/2	2 1/4	11 3/4	7/8	8	5/8 X 1 1/4	16
10	ZF2-C10	11.10	ZF2-S10	10.750	16	2 1/4	14 1/4	1	12	5/8 X 1 1/4	22
12	ZF2-C12	13.20	ZF2-S12	12.750	19	2 1/4	17	1	12	5/8 X 1 1/4	31

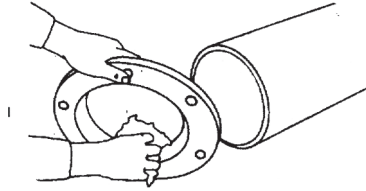
FOR SIZES 14" & ABOVE PLEASE REFER SIGMA FLANGE UNIVERSAL - SFUP

[CATALOG_SIGMA-FLANGE-UNIVERSAL-JULY-2022.pdf](#)

Dimensions in Inches, Weights in Pounds

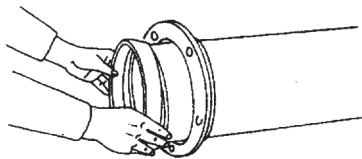
Installation Instructions

1.



Clean the plain end pipe after making sure the pipe end is square cut and burr-free. Lubricate the plain end pipe thoroughly with a soap-based pipe gasket lubricant.

2.



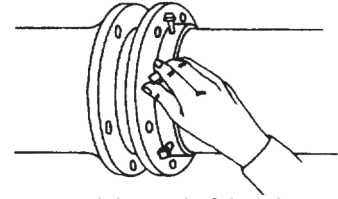
Slide the ZIP FLANGE - set screw side first, onto the plain end pipe. Lubricate the gasket, and then slide it over the pipe, tapered side first.

Set Screw Size & Torque Requirements

ZF2 Series - STANDARD

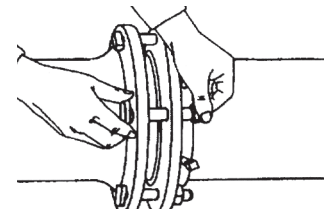
Pipe Size	Set Screw Size	Recommended Torque Values (ft-lbs.)						
		Ductile Iron Pipe Class				Steel Pipe Schedule		
		50	51	52	53+	20	30	40+
2	1/2 x 1	--	50	70	70	--	--	35
3	1/2 x 1	--	50	70	70	--	--	50
4	1/2 x 1	--	50	70	70	--	--	70
6	5/8 x 1 1/4	50	60	70	70	--	--	70
8	5/8 x 1 1/4	50	60	80	90	50	50	90
10	5/8 x 1 1/4	50	60	80	90	50	50	90
12	5/8 x 1 1/4	60	60	80	90	50	60	90

3.



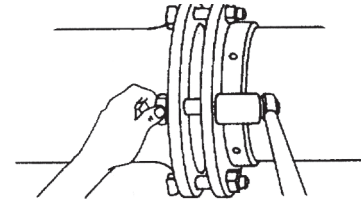
Slide the flange toward the end of the pipe, seating the gasket evenly in the flange cavity. Continue to slide the flange gasket toward the end of the pipe until the ZIP FLANGE face is flush with the end of the plain end pipe. Hand-tighten the set screws against the pipe surface.

4.



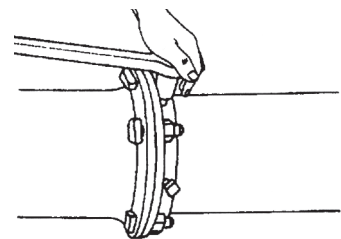
Use standard flange bolts to connect the flanges.

5.



Tighten the flange bolts alternately to keep the flange faces square to each other. When flange faces meet, torque flange bolts to specification.

6.



Tighten all set screws evenly to values shown in the chart on the left.



FM APPROVED ZIP FLANGES WITH BREAK OFF TOPS ARE RECOMMENDED TO BE USED WITH DI PIPE CL 52 & ABOVE & STEEL PIPE SCH 40 & ABOVE

LOCATIONS

Northeast Region

Cream Ridge, New Jersey (HQ)

700 Goldman Drive
Cream Ridge, NJ 08514
Phone (800) 999-2550
crmcsr@sigmaco.com

REPCO

51 Rue Gingras
Warwick, QC J0A 1M0
Phone (888) 744-6262
jbourcher@repco.ca

Concord Supply

2353 Bowman Street
Innisfil, Ontario L9S 3V6
Phone (877) 436-3800
tanya@concordsupply.ca

Midwest Region

Sauk Village, Illinois

21699 Torrence Avenue
Sauk Village, IL 60411
Phone (888) 999-0420
chicrs@sigmaco.com

Denver, Colorado

22700 I-76 Frontage Rd
Brighton, CO 80603
Phone (888) 999-0420
dbrugger@sigmaco.com

Southeast Region

Alexander City, Alabama

1500 Highway 22 W
Alexander City, AL 35010
Phone (800) 824-4513
alxcsr@sigmaco.com

Southwest Region

Houston, Texas

5000 Askins Lane
Houston, TX 77093
Phone (800) 999-0109
htncsr@sigmaco.com

Western Region

Ontario, California

4652 E. Guasti Road
Ontario, CA 91761
Phone (800) 688-6230
ontcsr@sigmaco.com

Auburn, Washington (Branch)

902 W Main Street
Auburn, WA 98001
Phone (800) 688-6230
ontcsr@sigmaco.com

www.sigmaco.com

Terms and Conditions of Sales available at our website.

AWWA Ductile Iron Fittings



- 2-64" C153 Ductile Iron Mechanical Joint Fittings
- 2-48" C110 Ductile Iron Mechanical Joint Fittings
- 2-64" C110 Ductile Iron Flanged Fittings
- 3-24" C153 Ductile Iron Push-On Fittings
- 4-24" C110 Ductile Iron Push-On Fittings
- 3-36" Ductile Iron Mechanical Joint Connector
- C116 Fusion Bonded Epoxy Lining Available
- PROTECTO 401® Ceramic Epoxy Lining Available

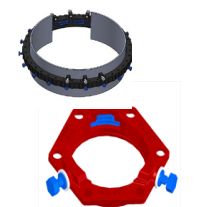
Visit our website for available special coatings. <https://www.sigmaco.com/project/fittings-coatings-linings/>

Mechanical Joint Accessories



- Prepackaged and Loose Mechanical Joint Accessories
- SIGMASEAL™ Improved Mechanical Joint Gasket
- Snap-On Multi-Purpose Gasket for Ductile Iron or PVC Pressure Pipes
- OMNI-SLEEVE™ Improved Wall Penetration Sleeve
- Specialty Bolts and Nuts for Mechanical Joint Assemblies

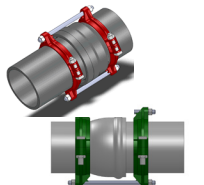
ONE-LOK™ Wedge Action Restraints



- 3-48" ONE-LOK D-SLDE Domestic Wedge Restraint for Ductile Iron Pipe
- 3-64" ONE-LOK SLDE Wedge Restraint for Ductile Iron Pipe (Import)
- 4-48" ONE-LOK T-SLDE Tandem Wedge Restraint for High Pressure Ductile Iron Pipe
- 3-36" ONE-LOK D-SLCE Domestic Wedge Restraint for PVC Pipe
- 3-12" ONE-LOK SLC Wedge Restraint for PVC Pipe (Import)
- 3-60" ONE-LOK SLCE Wedge Restraint for PVC Pipe (Import)
- 3-42" ONE-LOK SLDEH Wedge Harness Restraint for Ductile Iron Pipe
- 4-12" /16" /20" ONE-LOK SLDM Wedge Restraint for Oversized Cast Iron Pipe
- 4-48" ONE-LOK SSLD Split Wedge Restraint for Installed Ductile Iron Pipe & Fitting
- 4-36" ONE-LOK SSLDH Split Wedge Harness Restraint for Installed Ductile Iron Pipe
- 4-12" ONE-LOK SLCEH Wedge Harness Restraint for AWWA C900 PVC Pipe

Visit our website for available special coatings. <https://www.sigmaco.com/download/corsafe-alternative-coating-for-enhanced-exterior-corrosion-protection-on-wedge-and-serration-type-restrainers/>

PV-LOK™ Serration Lock Restraints



- 4-48" PV-LOK PWM Serrated Restraint for Ductile Iron Fitting & AWWA C900/905 PVC Pipe
- 4-48" PV-LOK PWP Serrated Bell Joint Restraint for AWWA C900/905 PVC Pipe
- 4-12" PV-LOK D-PWP Domestic Serrated Bell Joint Restraint for AWWA C900 PVC Pipe
- 4-12" PV-LOK PVPF Restraint for AWWA C900/905 PVC Pipe & PVC Fitting
- 4-12" PV-LOK PWH Serrated Harness Restraint for AWWA C900 PVC Pipe
- 2-12" PV-LOK PVM Serrated Restraint for Ductile Iron & IPS OD PVC pipe
- 2-12" PV-LOK PVP Serrated Bell Joint Restraint for IPS OD PVC Pipe
- 2-8" PV-LOK PVPF Serrated Restraint for IPS OD PVC Pipe & PVC Fitting
- 4-12" PV-LOK PWP Serrated Bell Joint Restraint for Ductile Iron Pipe

Visit our website for available special coatings. <https://www.sigmaco.com/download/corsafe-alternative-coating-for-enhanced-exterior-corrosion-protection-on-wedge-and-serration-type-restrainers/>

HDPE (Raven) Products



- Rotational Molded Meter Boxes & Pits
- Optional White Interior Available
- Light & Medium Duty Load Capacities
- Extensive Nationwide Inventory
- Rotational Molded Oil-Water Separators
- OEM Service Available

Municipal Construction Castings



- Manhole Rings and Covers
- Curb and Meter Boxes
- Frames and Grates
- Storm Inlets
- Valve Boxes, Risers, and Extensions

Products for the Ductile Iron Fabricator



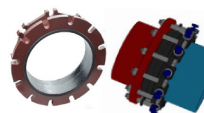
- 3-64" High Hub Threaded Flanges
- 3-48" Tapped High Hub Threaded Flanges
- 3-36" Extra Heavy 250lb Drilled Threaded Flanges
- 3-48" Threaded MJ Bell Adapters
- 3-48" MJ x PE Bell adapter
- 3-48" Anchor Flanges
- 3-16" Filler Flanges

Extended Range Products



- Flange-Pak™ Prepackaged Flange Accessory Sets
- Polyethylene Encasement for Ductile Iron Pipe
- Copper Tubing Products
- Tracer Wire & Detectable/Non-Detectable Marking Tape
- Pipe Joint Lubricant & Hydraulic Cement
- Socket Clamps and Tie Rod Accessories
- Boxlok Valve Box Alignment Device
- Cast Iron Companion Flanges

Flange Adapters



- 3-36" SIGMAFLANGE Flange Adapter Sleeve for PVC and Ductile Iron Pipe
- 2-48" ZIP FLANGE Set Screw Style Flange Adapter
- 3-36" SIGMAFLANGE Universal Joint for Flanged Fittings, Flanged Pipes & Valves