

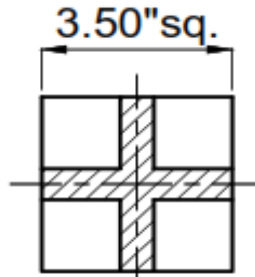


# SIGMA™

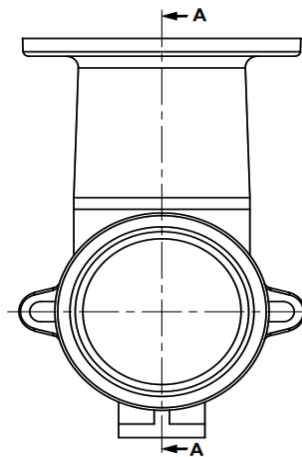
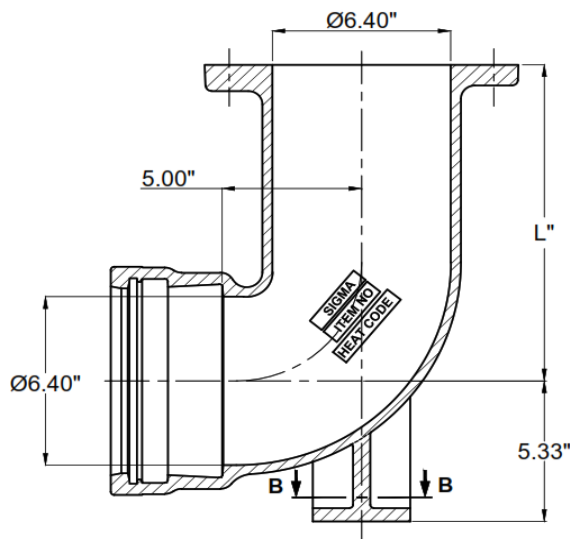
## Hydrant Bury Push On Ductile Iron 350

Item#	Size	Wt (Lbs)
DBP624	6x24	81.49
DBP630	6x30	92.66
DBP636	6x36	103.83
DBP642	6x42	115.01
DBP648	6x48	126.19
DBP654	6x54	137.36

### Section B-B



### Section A-A



SIZES 612 to 654



#### Notes:

1. Material: Ductile Iron, ASTM-A536, Grade 70-5-5 or 60-42-10.
2. Drawing design is as per ANSI/AWWA C153/A21.53
3. Pressure Rating: 250psi
4. Flanges are drilled with 6 holes (Los Angeles) of 3/4" diameter @ 9 1/2" bolt circle diameter, 8 holes of 7/8" diameter @ 9 1/2" bolt circle diameter, or 6 holes (San Diego) of 7/8" diameter @ 9 1/2" bolt circle diameter.
5. Cement-mortar lined thickness as per ANSI/AWWA C104/A21.4
6. Conforms to AWWA C503-18 standard



Rev	Date	Revision Record	Prepared by	Approved by

TOLERANCES UNLESS OTHERWISE SPECIFIED	
CAST:	
0"-1"	±0.04"
0-25mm	±1mm
1"-4"	±0.06"
25-100mm	±1.5mm
4"-16"	±0.09"
100-400mm	±2.3mm
18"-30"	±0.11"
457-762mm	±2.8mm
36"-60"	±0.13"
914-1524mm	±3.3mm

All Radii & Fillets to be 0.12" (3mm) unless otherwise specified. All Draft angles to be 2° unless otherwise specified on drawing.	
Product Group :-	Ductile Iron Push-on Fittings
Coating/Lining:-	Asphaltic Coating/Cement Lined
Type :-	FITTING SIZE AND CAST MARKS
Product Description:-	C153-DI 6" Push-on Hydrant Buries with Base Fitting & Cast Marks - 612-654-6 Dimensions.
Drawing Number:-	DBP612-654
Rev :-	0

 CREAM RIDGE, NEW JERSEY		DATE:	11.12.2018	DRAWN BY:	KR
		DRAWING FOR:	SUBMITTAL	CHECKED BY:	PB
SCALE:	NTS	SHEET NO:	1 OF 1	APPROVED BY:	SR1

SIGMA Corporation

4652 E. Guasti Road  
Ontario, CA 91761

800-688-6230 P

909-391-2033 F

www.sigmaco.com

February 2023