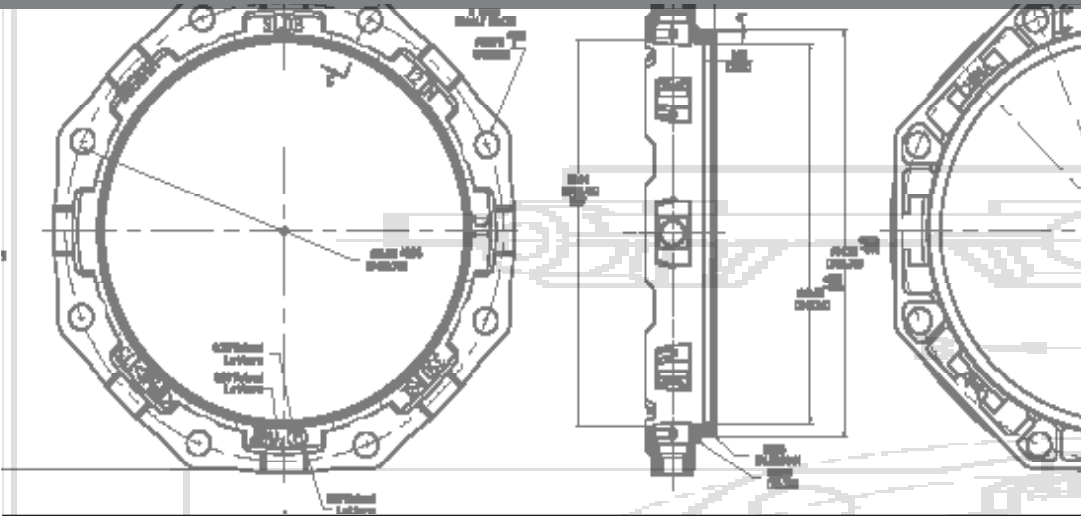


Pipe Restraint Products Price List



Effective January 17, 2022-1

- **IMPORTS**





PIPE RESTRAINT PRODUCTS IMPORT PRICE LIST

Effective January 17, 2022-1

TERMS, CONDITIONS AND GUIDELINES OF SALES

1. All orders are subject to approval and acceptance by SIGMA Corp.
2. **PRICES:** Prices are subject to change without notice.
3. **SHORTAGES:** All sales are F.O.B. Shipping Point. Any damage or shortage must be noted on the delivery bill of lading or our packing list and acknowledged by the delivering carrier's agent. All claims for damage or shortage must be made in writing within 7 (seven) days of receipt of material.
4. **DELIVERY OF MATERIAL:** SIGMA will make every effort to make delivery within time specified. Any delay in meeting shipping schedules will not make SIGMA liable for damages of any kind, liquidated or unliquidated, including damages for loss of use.
5. **WARRANTY:** SIGMA gives warranty for material furnished under its trade names "SIGMA/NAPPCO" against any defects in material or workmanship subject to normal use, for a period of one year after date of shipment. SIGMA will replace the defective product at the delivery point or, at its option, repay price paid for the product plus any transportation charges paid by Buyer in addition to such price. SIGMA is not responsible for consequential or incidental damages for loss of use, or any other damages whatsoever, in connection with the warranties set forth above or implied by law, or any purported negligence of SIGMA.

No terms or conditions, other than those stated above, and no agreement or understanding, oral or written, in any way purporting to modify these terms or conditions, whether contained in Buyer's purchase orders or shipping release forms, or elsewhere, shall be binding on SIGMA unless hereafter made in writing and signed by SIGMA'S authorized representative.
6. All sales, use, excise, state, local or similar taxes are the responsibility of the Buyer. In the event SIGMA must pay or collect such taxes, the Buyer agrees to promptly reimburse the same to SIGMA.
7. **TERMS:** All invoices are payable in net 30 days, unless other terms are explicitly mentioned in the invoices. A service charge may be added to all past due accounts.
8. Buyer may not return or cancel any part or all of the order without prior written authorization. There will be a minimum restocking charge of 25% for goods accepted for return.
9. Buyer will furnish and pay for necessary labor to unload and store material.
10. Please use Sigma's item numbering system in all your orders or inquiries to facilitate faster and easier processing.
11. Please try to order in Sigma's standard crate quantities, whenever possible, to facilitate quicker processing of your orders.
12. Sigma is constantly adding newer sizes and items to its on-hand inventory available for immediate delivery. Please check with us for the update in availability when you put your list together – the items you are looking for may already be here!
13. **FREIGHT TERMS:** The minimum order for freight allowed is 5,000 lbs. of fittings, with or without accessories. (Manhole covers and valve boxes are not covered by these minimum freight allowed terms.)

ONE-LOK™ Wedge Action Restraints for Ductile Iron Pipe

ONE-LOK SERIES SLDE

Wedge-Action Gland for Restraining Ductile Iron Pipe to Mechanical Joint Fittings.

Nominal Pipe Size (in.)	Item No	Item No	Weight (lbs.)	List Price	E-Coat List Price
	Shop Coated	E-Coat			
3	SLDE3	SLDE-X3	6.5	\$59.55	\$61.93
4	SLDE4	SLDE-X4	10	\$63.10	\$65.63
6	SLDE6	SLDE-X6	12	\$74.21	\$77.17
8	SLDE8	SLDE-X8	15.5	\$111.52	\$115.98
10	SLDE10	SLDE-X10	26	\$165.29	\$171.90
12	SLDE12	SLDE-X12	34	\$240.82	\$250.46
14	SLDE14	SLDE-X14	45	\$319.66	\$332.45
16	SLDE16	SLDE-X16	59	\$456.21	\$474.46
18	SLDE18	SLDE-X18	60	\$646.23	\$672.08
20	SLDE20	SLDE-X20	75	\$802.59	\$834.69
24	SLDE24	SLDE-X24	140	\$1,114.40	\$1,158.97
30	SLDE30	SLDE-X30	226	\$2,813.76	\$2,926.32
36	SLDE36	SLDE-X36	307	\$3,586.33	\$3,729.79
42	SLDE42	SLDE-X42	432	\$5,446.14	\$5,663.98
48	SLDE48	SLDE-X48	568	\$6,960.45	\$7,238.87
54	SLDE54	SLDE-X54	1095.3	POA	POA
60	SLDE60	SLDE-X60	1233.5	POA	POA
64	SLDE64	SLDE-X64	1388.50	POA	POA



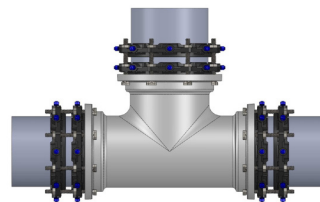
*SLDE Restraints were previously referred to as SLD

**Electrodeposition Coatings available on request, contact SIGMA for details.

ONE-LOK SERIES T-SLDEP

Tandem Wedge-Action Glands for Restraining Ductile Iron Pipe to Mechanical Joint Fittings with Hardware

Nominal Pipe Size (in.)	Item No	Approx Weight (lbs.)	List Price
	Ductile		
4	T-SLDEP4	13	Please Call
6	T-SLDEP6	20	Please Call
8	T-SLDEP8	29	Please Call
10	T-SLDEP10	46	Please Call
12	T-SLDEP12	58	Please Call
14	T-SLDEP14	79	Please Call
16	T-SLDEP16	99	Please Call
18	T-SLDEP18	121	Please Call
20	T-SLDEP20	138	Please Call
24	T-SLDEP24	207	Please Call
30	T-SLDEP30	317	Please Call
36	T-SLDEP36	469	Please Call
42	T-SLDEP42	688	Please Call
48	T-SLDEP48	912	Please Call



PRICE LIST

ONE-LOK™ Wedge Action Restraints for Ductile Iron Pipe

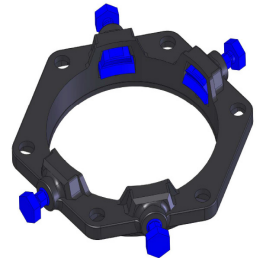
ONE-LOK SERIES SLDEP

Complete Wedge-action Gland Restrainer
Accessory Kit (includes MJ gasket with T-Bolts & Nuts) for restraining Ductile Iron Pipe to Mechanical Joint Fittings.

Nominal Pipe Size (in.)	Item No	Item No	Weight (lbs.)	List Price	E-Coat List Price	Item No	Item No	List Price Teflon Accessories	List Price E-Coat with Teflon Accessories
	Shop Coated	E-Coat				With Teflon Accessories	E-Coat with Teflon Accessories		
3	SLDEP3	SLDE-XP3	8.5	\$91.20	\$94.85	SLDEP3TT	SLDE-XP3TT	\$103.27	\$103.27
4	SLDEP4	SLDE-XP4	14	\$99.28	\$103.25	SLDEP4TT	SLDE-XP4TT	\$128.30	\$128.30
6	SLDEP6	SLDE-XP6	17	\$122.63	\$127.54	SLDEP6TT	SLDE-XP6TT	\$186.20	\$186.20
8	SLDEP8	SLDE-XP8	21.5	\$167.10	\$173.78	SLDEP8TT	SLDE-XP8TT	\$237.44	\$237.44
10	SLDEP10	SLDE-XP10	34	\$237.63	\$247.14	SLDEP10TT	SLDE-XP10TT	\$364.84	\$364.84
12	SLDEP12	SLDE-XP12	42	\$319.38	\$332.15	SLDEP12TT	SLDE-XP12TT	\$425.60	\$425.60
14	SLDEP14	SLDE-XP14	55	\$424.80	\$441.80	SLDEP14TT	SLDE-XP14TT	\$694.63	\$694.63
16	SLDEP16	SLDE-XP16	71	\$573.09	\$596.01	SLDEP16TT	SLDE-XP16TT	\$817.88	\$817.88
18	SLDEP18	SLDE-XP18	72	\$775.00	\$805.99	SLDEP18TT	SLDE-XP18TT	\$1,006.88	\$1,006.88
20	SLDEP20	SLDE-XP20	89	\$945.66	\$983.49	SLDEP20TT	SLDE-XP20TT	\$1,171.58	\$1,171.58
24	SLDEP24	SLDE-XP24	156	\$1,281.40	\$1,332.66	SLDEP24TT	SLDE-XP24TT	\$1,601.72	\$1,601.72
30	SLDEP30	SLDE-XP30	273	\$2,844.92	\$2,958.72	SLDEP30TT	SLDE-XP30TT	\$3,645.88	\$3,645.88
36	SLDEP36	SLDE-XP36	363	\$3,625.53	\$3,770.56	SLDEP36TT	SLDE-XP36TT	\$4,905.32	\$4,905.32
42	SLDEP42	SLDE-XP42	548	\$5,505.67	\$5,725.90	SLDEP42TT	SLDE-XP42TT	\$8,208.48	\$8,208.48
48	SLDEP48	SLDE-XP48	701	\$7,036.54	\$7,318.00	SLDEP48TT	SLDE-XP48TT	\$10,338.00	\$10,338.00
54	SLDEP54	SLDE-XP54	1253.7	See SLDE-XP54	POA	SLDEP54TT	SLDE-XP54TT	See SLDE-XP54TT	POA
60	SLDEP60	SLDE-XP60	1346.7	See SLDE-XP60	POA	SLDEP60TT	SLDE-XP60TT	See SLDE-XP60TT	POA
64	SLDEP64	SLDE-XP64	1479.3	See SLDE-XP64	POA	SLDEP64TT	SLDE-XP64TT	See SLDE-XP64TT	POA

NOTE REGARDING ONE-LOK Accessory Kits:

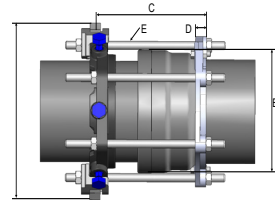
- 3"-16" are packaged in a shrink wrapped carton
- 18" -48" are bulk packaged
- 30" - 48" include a SIGMA-SEAL gasket



ONE-LOK™ Wedge Action Restraints for Ductile Iron Pipe (cont.)

ONE-LOK SERIES SLDEH/SSLDH

Wedge-Action Gland and Mechanical Joint Gland Ring For
Harness Restraint of Push-on Ductile Iron Pipe Bell Joints.
(Split Restraint for existing installations)



Nominal Pipe Size (in.)	Standard SLDEH Restraint					Split SSLDH Restraint			No. of Rods	Rod Length (in.)	Rod Diameter (in.)	Max. Bell Diameter (in.)**
	Item No.	E-Coat	List Price	E-Coat List Price	Wt (lbs)	Item No.	List Price	Wt (lbs)				
3	SLDEH3	SLDEH-X3	\$123.92	\$130.44	12	-	-	-	4	17	5/8	5.4
4	SLDEH4	SLDEH-X4	\$126.26	\$132.91	18	SSLDH4	\$392.53	15	4	17	3/4	6.6
6	SLDEH6	SLDEH-X6	\$186.94	\$196.78	25	SSLDH6	\$560.06	23	6	17	3/4	8.6
8	SLDEH8	SLDEH-X8	\$243.50	\$256.32	34	SSLDH8	\$667.81	32	6	17	3/4	10.9
10	SLDEH10	SLDEH-X10	\$426.71	\$449.17	51	SSLDH10	\$1,088.82	49	8	24	3/4	13.1
12	SLDEH12	SLDEH-X12	\$533.96	\$562.06	65	SSLDH12	\$1,306.66	55	8	24	3/4	15.4
14	SLDEH14	SLDEH-X14	\$1,073.15	\$1,129.63	87	SSLDH14	\$1,871.48	95	10	24	3/4	17.9
16	SLDEH16	SLDEH-X16	\$1,197.01	\$1,260.01	111	SSLDH16	\$2,197.06	100	12	24	3/4	20.1
18	SLDEH18	SLDEH-X18	\$1,319.96	\$1,389.43	119	SSLDH18	\$2,709.67	120	12	24	3/4	22.4
20	SLDEH20	SLDEH-X20	\$1,871.48	\$1,969.98	144	SSLDH20	\$3,360.39	135	14	24	3/4	24.6
24	SLDEH24	SLDEH-X24	\$2,423.95	\$2,551.53	227	SSLDH24	\$4,238.47	175	16	24	3/4	29.1
30	SLDEH30	SLDEH-X30	\$4,601.07	\$4,843.23	399	SSLDH30	\$6,341.08	399	20	24	1	35.8
36	SLDEH36	SLDEH-X36	\$6,729.32	\$7,083.49	508	SSLDH36	\$8,960.57	508	24	24	1	42.6
42	SLDEH42	SLDEH-X42	\$13,961.28	\$14,696.08	765	-	-	-	38	24	1-1/4	49.2
48	SLDEH48		\$18,180.75		1,051	-	-	-	32	24	1-1/4	56.1

*SLDEH Restraints were previously referred to a SLDH.

**NOTE: Restraining rods WILL NOT CLEAR a pipe bell with a maximum diameter larger than listed "MAX" Bell Dimension. Gauged pipe is recommended for sizes 14" and larger.

ONE-LOK™ Wedge Action Restraints

ONE-LOK SERIES SLDM

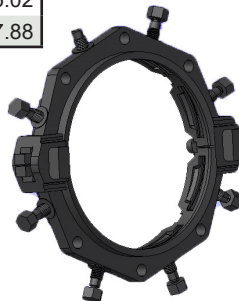
For use on Oversized Iron Pipes

Nominal Pipe Size (in.)	Item No.	Approx Weight (lbs.)	List Price
4	SLDM4	20	\$125.00
6	SLDM6	12	\$138.37
8	SLDM8	15	\$192.35
10	SLDM10	26	\$238.94
12	SLDM12	34	\$320.12
16	SLDM16	52	\$595.02
20	SLDM20	75	\$957.88

ONE-LOK SERIES SSLDP

Split MJ Restraint for D.I. Pipe existing installations

Nominal Pipe Size (in.)	Item No.	Approx Weight (lbs.)	List Price
4	SSLDP4	19	\$211.40
6	SSLDP6	25	\$298.43
8	SSLDP8	32	\$367.45
10	SSLDP10	40	\$458.76
12	SSLDP12	45	\$569.82
14	SSLDP14	62	\$1,246.90
16	SSLDP16	97	\$1,396.13
18	SSLDP18	100	\$1,715.07
20	SSLDP20	110	\$2,136.14
24	SSLDP24	163	\$3,530.85
30	SSLDP30	293	\$5,401.21
36	SSLDP36	429	\$7,105.55



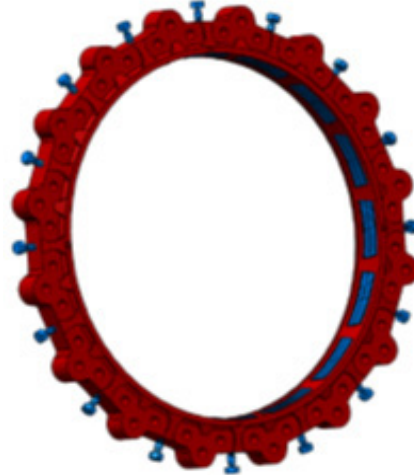
PIPE RESTRAINT PRODUCTS PRICE LIST

ONE-LOK™ Wedge Action Restraints for PVC Pipe

ONE-LOK SERIES SLCE

Wedge-Action Gland for Restraining PVC Pipe for Mechanical Joint Fittings.

Nominal Pipe Size (in.)	Item No	Item No	Wgt (lbs)	List Price	E-Coat List Price
	Shop Coated	E-Coat			
3	SLCE3	SLCE-X3	6	\$71.10	\$73.95
4	SLCE4	SLCE-X4	7	\$76.43	\$79.49
6	SLCE6	SLCE-X6	10	\$92.87	\$96.58
8	SLCE8	SLCE-X8	14	\$137.30	\$142.79
10	SLCE10	SLCE-X10	21	\$259.50	\$269.88
12	SLCE12	SLCE-X12	27	\$273.27	\$284.21
14	SLCE14	SLCE-X14	34	\$450.66	\$468.68
16	SLCE16	SLCE-X16	42	\$606.10	\$630.35
18	SLCE18	SLCE-X18	50	\$752.33	\$782.42
20	SLCE20	SLCE-X20	61	\$932.21	\$969.50
24	SLCE24	SLCE-X24	79	\$1,076.59	\$1,119.66
30	SLCE30	SLCE-X30	198	\$3,269.43	\$3,400.21
36	SLCE36	SLCE-X36	248	\$3,988.55	\$4,148.09
42	SLCE42	SLCE-X42	655	\$9,047.69	\$9,409.61
48	SLCE48	SLCE-X48		\$11,714.27	\$12,182.85
54	SLCE54	SLCE-X54	911.89	POA	POA
60	SLCE60	SLCE-X60	1004.4	POA	POA



(4" through 12" AWWAC-900 or ASTM D2241 IPS, 14" through 24" AWWA C-905) to Mechanical Joint Fittings.

*SLCE Restraints were previously referred to as SLC

PRICE LIST

ONE-LOK™ Wedge Action Restraints for PVC Pipe (cond.)

ONE-LOK SERIES SLCEP

Wedge-action Gland Restraint Accessory Kit
for Restraining PVC Pipe to Mechanical Joint Fittings.

Nominal Pipe Size (in.)	Item No	Item No	Weight (lbs.)	List Price	E-Coat List Price	Item No	Item No	List Price Teflon Accessories	List Price E-Coat with Teflon Accessories
	Shop Coated	E-Coat				With Teflon Accessories	E-Coat with Teflon Accessories		
3	SLCEP3	SLCE-XP3	9	\$106.01	\$110.25	SLCEP3TT	SLCE-XP3TT	\$132.98	\$132.98
4	SLCEP4	SLCE-XP4	11	\$114.10	\$118.67	SLCEP4TT	SLCE-XP4TT	\$143.78	\$143.78
6	SLCEP6	SLCE-XP6	16	\$142.85	\$148.56	SLCEP6TT	SLCE-XP6TT	\$206.25	\$206.25
8	SLCEP8	SLCE-XP8	21	\$192.71	\$200.41	SLCEP8TT	SLCE-XP8TT	\$259.73	\$259.73
10	SLCEP10	SLCE-XP10	30	\$335.55	\$348.98	SLCEP10TT	SLCE-XP10TT	\$373.86	\$373.86
12	SLCEP12	SLCE-XP12	37	\$352.16	\$366.24	SLCEP12TT	SLCE-XP12TT	\$432.27	\$432.27
14	SLCEP14	SLCE-XP14	48	\$554.91	\$577.11	SLCEP14TT	SLCE-XP14TT	\$696.39	\$696.39
16	SLCEP16	SLCE-XP16	58	\$725.57	\$754.59	SLCEP16TT	SLCE-XP16TT	\$844.70	\$844.70
18	SLCEP18	SLCE-XP18	67	\$880.86	\$916.10	SLCEP18TT	SLCE-XP18TT	\$1,077.39	\$1,077.39
20	SLCEP20	SLCE-XP20	82	\$1,078.56	\$1,121.71	SLCEP20TT	SLCE-XP20TT	\$1,090.49	\$1,090.49
24	SLCEP24	SLCE-XP24	101	\$1,249.23	\$1,299.19	SLCEP24TT	SLCE-XP24TT	\$1,365.06	\$1,365.06
30	SLCEP30	SLCE-XP30	225	\$3,305.16	\$3,437.36	SLCEP30TT	SLCE-XP30TT	\$3,825.81	\$3,825.81
36	SLCEP36	SLCE-XP36	307	\$4,032.14	\$4,193.43	SLCEP36TT	SLCE-XP36TT	\$4,562.55	\$4,562.55
42	SLCEP42	SLCE-XP42	771	\$9,146.62	\$9,512.49	SLCEP42TT	SLCE-XP42TT	\$13,567.40	\$13,567.40
48	SLCEP48	SLCE-XP48		\$11,842.35	\$12,316.04	SLCEP48TT	SLCE-XP48TT	\$16,647.12	\$16,647.12
54	SLCEP54	SLCE-XP54	1104.8	See SLCE-XP54	POA	SLCEP54TT	SLCE-XP54TT	See SLCE-XP54TT	POA
60	SLCEP60	SLCE-XP60	1197.7	See SLCE-XP60	POA	SLCEP60TT	SLCE-XP60TT	See SLCE-XP60TT	POA

ONE-LOK SERIES SLCEP-T

Wedge-action Gland Restraint with TG Accessory Kit

Nominal Pipe Size (in.)	Item No.	List Price
4	SLCEP4T	\$123.95
6	SLCEP6T	\$154.68
8	SLCEP8T	\$207.95
10	SLCEP10T	\$360.62
12	SLCEP12T	\$378.37

**Electrodeposition Coatings available on request, contact SIGMA for details.

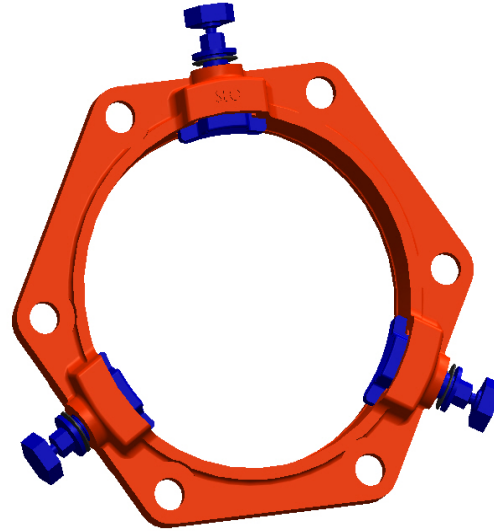
PRICE LIST

SIGMA ONE-LOK™ SERIES SLO
ONE Restraint For All Types of Pipe
Ductile Iron, C900, Steel, IPS, HDPE, and C909 Pipe

ONE-LOK SERIES SLO/SLOP

Wedge-action Gland Restrainer (including with Accessory Kit)
for Restraining all types of pipe to Mechanical Joint Fittings

Nominal Pipe Size (in.)	Item No	Weight (lbs.)	List Price
3	SLO3	5	\$73.95
4	SLO4	6.5	\$79.49
6	SLO6	10.5	\$96.58
8	SLO8	14.5	\$142.79
10	SLO10	20	\$269.88
12	SLO12	25	\$284.21
3	SLOP3	12	\$110.25
4	SLOP4	13	\$118.67
6	SLOP6	17	\$148.56
8	SLOP8	19.5	\$200.41
10	SLOP10	29.5	\$348.98
12	SLOP12	35	\$366.24



• SLO 3-12 is UL listed on Ductile Iron Pipe for 350 PSI, on C900 PVC pipe for 235 PSI & on steel pipe for 300 PSI, sizes 3", 250 PSI for 4"-12"

• SLO 3-12 is FM approved on Ductile Iron Pipe for 175 PSI, on C900 PVC pipe for 150 PSI & on steel pipe with 350 PSI for 4"-12"

PRICE LIST

PV-LOK™ Serration Lock Restraints for PVC Pipe

PV-LOK SERIES PWM

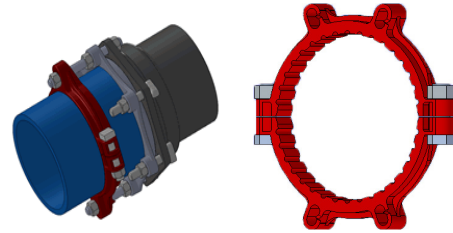
Serration-Lock Clamp for Restraining AWWA C900/C905 PVC Pipe to Mechanical Joint Fittings or Push-On with Ear-Lug Fittings.

Nominal Pipe Size (in.)	Item No	Item No	Weight (lbs.)	List Price	E-Coat List Price
	Standard	E-Coat			
4	PWM-C4	PWME-C4	12	\$70.47	\$73.28
6	PWM-C6	PWME-C6	13	\$86.52	\$89.98
8	PWM-C8	PWME-C8	19	\$144.21	\$149.98
10	PWM-C10	PWME-C10	33	\$242.27	\$251.97
12	PWM-C12	PWME-C12	36	\$259.15	\$269.51
14	PWM-C14	PWME-C14	50	\$527.06	\$548.14
16	PWM-C16	PWME-C16	55	\$548.64	\$570.59
18	PWM-C18	PWME-C18	65	\$658.38	\$684.72
20	PWM-C20	PWME-C20	170	\$907.99	\$944.30
24	PWM-C24	PWME-C24	191	\$1,392.99	\$1,448.71
30	PWM-C30	PWME-C30	265	\$2,476.08	\$2,575.11
36	PWM-C36	PWME-C36	320	\$2,971.82	\$3,090.70
42	PWM-C42	PWME-C42	758	\$8,035.73	\$8,357.17
48	PWM-C48	PWME-C48	790	\$8,814.13	\$9,166.70

PV-LOK SERIES PVM

Serration-Lock Clamp for Restraining ASTM D2241 IPS PVC Pipe to Mechanical Joint Fittings or Push-On with Ear-Lug Fittings.

Nominal Pipe Size (in.)	Item No.	Item No. E-Coat	Pipe OD (in.)	Weight (lbs.)	List Price	E-Coat List Price
2	PVM-S2	PVME-S2	2.375	5	\$58.26	\$60.60
3	PVM-S3	PVME-S3	3.5	8	\$70.86	\$73.70
4	PVM-S4	PVME-S4	4.5	12	\$75.21	\$78.22
6	PVM-S6	PVME-S6	6.625	13	\$92.16	\$95.85
8	PVM-S8	PVME-S8	8.625	19	\$123.46	\$128.40
10	PVM-S10	PVME-S10	10.75	33	\$258.21	\$268.54
12	PVM-S12	PVME-S12	12.75	36	\$276.05	\$287.08



PV-LOK SERIES PWP

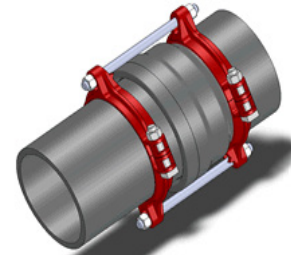
Serration-Lock Clamping Rings for Restraining AWWA C900/C905 PVC Bell X Spigot Pipe Joints.

Nominal Pipe Size (in.)	Item No	Item No	Pipe OD (in.)	Wgt (lbs)	List Price	E-Coat List Price
	Standard	E-Coat				
4	PWP-C4	PWPE-C4	4.80	18	\$111.75	\$116.22
6	PWP-C6	PWPE-C6	6.90	21	\$139.91	\$145.51
8	PWP-C8	PWPE-C8	9.05	32	\$233.87	\$243.23
10	PWP-C10	PWPE-C10	11.10	54	\$406.41	\$422.67
12	PWP-C12	PWPE-C12	13.20	59	\$444.85	\$462.65
14	PWP-C14	PWPE-C14	15.30	105	\$1,014.66	\$1,055.25
16	PWP-C16	PWPE-C16	17.40	115	\$1,031.70	\$1,072.97
18	PWP-C18	PWPE-C18	19.50	135	\$1,277.39	\$1,328.48
20	PWP-C20	PWPE-C20	21.60	299	\$1,804.08	\$1,876.24
24	PWP-C24	PWPE-C24	25.80	341	\$2,658.24	\$2,764.57
30	PWP-C30	PWPE-C30	32.00	540	\$5,094.66	\$5,298.44
36	PWP-C36	PWPE-C36	38.30	655	\$6,467.06	\$6,725.74
42	PWP-C42	PWPE-C42	44.50	1400	\$15,064.68	\$15,667.26
48	PWP-C48	PWPE-C48	50.80	1400	\$16,733.36	\$17,402.70

PV-LOK SERIES PVP

Serration-Lock Clamping Rings for Restraining ASTM D2241 IPS PVC Bell X Spigot Pipe Joints.

Nominal Pipe Size (in.)	Item No.	Item No. E-Coat	Pipe OD (in.)	Wgt (lbs)	List Price	E-Coat List Price
2	PVP-S2	PVPE-S2	2.375	9	\$92.15	\$95.85
3	PVP-S3	PVPE-S3	3.5	15	\$99.56	\$103.55
4	PVP-S4	PVPE-S4	4.5	18	\$105.65	\$109.87
6	PVP-S6	PVPE-S6	6.625	21	\$125.19	\$130.20
8	PVP-S8	PVPE-S8	8.625	32	\$228.65	\$237.80
10	PVP-S10	PVPE-S10	10.75	54	\$397.31	\$413.20
12	PVP-S12	PVPE-S12	12.75	59	\$434.71	\$452.10



NOTE: 2-12" are packed in a shrink wrapped carton. 14"-48" are bulk packed.

**PWM-C/PWP-C/PWPF-C Products were previously referred to as PVM-C/PVP-C/PVPF-C

PIPE RESTRAINT PRODUCTS PRICE LIST

PV-LOK™ Serration Lock Restraints for PVC Pipe (cont.)

PV-LOK SERIES PWPF

Serration-Lock Clamping Ring and Split Beveled Back-up Ring for Restraining AWWA C900 PVC Pipe to PVC Pressure Fittings.

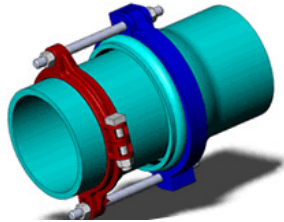
Nominal Pipe Size (in.)	Item No	Item No	Pipe OD (in.)	Wgt (lbs)	List Price	E-Coat List Price
	Standard	E-Coat				
4	PWPF-C4	PWPFE-C4	4.80	14	\$111.25	\$115.70
6	PWPF-C6	PWPFE-C6	6.90	18	\$149.15	\$155.11
8	PWPF-C8	PWPFE-C8	9.05	24	\$243.50	\$253.24
10	PWPF-C10	PWPFE-C10	11.10	53	\$400.48	\$416.51
12	PWPF-C12	PWPFE-C12	13.20	58	\$467.63	\$486.34

PV-LOK SERIES PVPF

Serration-Lock Clamping Ring and Split Beveled Back-up Ring for Restraining ASTM D2241 IPS PVC Pipe to PVC Pressure Fittings.

Nominal Pipe Size (in.)	Item No.	Item No. E-Coat	Pipe OD (in.)	Wgt (lbs)	List Price	E-Coat List Price
4	PVPF-S4	PVPFE-S4	4.5	14	\$118.67	\$123.42
6	PVPF-S6	PVPFE-S6	6.625	18	\$159.09	\$165.46
8	PVPF-S8	PVPFE-S8	8.625	24	\$259.48	\$269.87

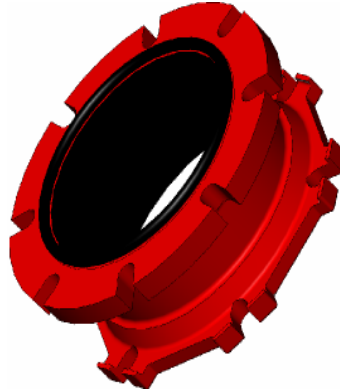
**PWM-C/PWP-C/PWPF-C Products were previously referred to as PVM-C/PVP-C/PVPF-C



SIGMAFLANGE™ Restrained Flange Adapter Fitting

SIGMAFLANGE Adapter Only

Nominal Pipe Size (in.)	Item No.	Weight (lbs.)	List Price
3	SFA3	8.0	\$129.21
4	SFA4	13.0	\$145.97
6	SFA6	19.5	\$242.46
8	SFA8	28.0	\$406.05
10	SFA10	46.5	\$549.51
12	SFA12	54.0	\$727.38
14	SFA14	68.0	\$1,718.17
16	SFA16	88.0	\$2,012.65
18	SFA18	101.0	\$2,146.04
20	SFA20	126.0	\$2,429.18
24	SFA24	166.0	\$3,077.28
30	SFA30	396.0	\$3,807.17
36	SFA36	437.0	\$4,964.48



*Includes SIGMAFLANGE Adapter and O-Ring.

For Reference only: When ordering, customers should separately order the SFA adapter and Wedge Action Restrainer with accessories.

PIPE RESTRAINT PRODUCTS

PRICE LIST

SIGMAFLANGE with SLCEP ONE-LOK™ Restrainer Pack for PVC Pipe

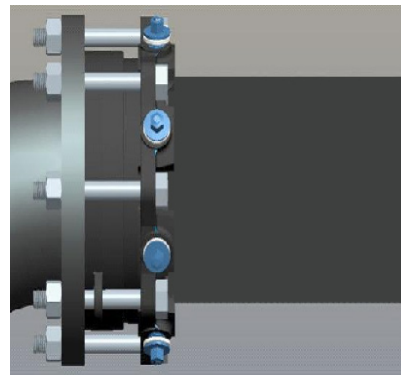
Nominal Pipe Size (in.)	Item No.	Weight (lbs.)	List Price
3	SFACP3	16.5	\$243.86
4	SFACP4	27.0	\$267.62
6	SFACP6	36.5	\$399.26
8	SFACP8	49.5	\$620.70
10	SFACP10	80.5	\$915.06
12	SFACP12	96.0	\$1,119.23
14	SFACP14	123.0	\$2,397.29
16	SFACP16	159.0	\$2,815.54
18	SFACP18	173.0	\$3,330.06
20	SFACP20	215.0	\$3,729.31
24	SFACP24	322.0	\$4,795.45
30	SFACP30	601.0	\$7,192.76
36	SFACP36	726.0	\$9,057.40

SIGMAFLANGE with SLDEP ONE-LOK™ Restrainer Pack for Ductile Iron Pipe

Nominal Pipe Size (in.)	Item No.	Weight (lbs.)	List Price
3	SFADP3	16.5	\$228.78
4	SFADP4	27.0	\$252.96
6	SFADP6	36.5	\$378.12
8	SFADP8	49.5	\$593.93
10	SFADP10	80.5	\$817.52
12	SFADP12	96.0	\$1,086.85
14	SFADP14	123.0	\$2,215.14
16	SFADP16	159.0	\$2,669.22
18	SFADP18	173.0	\$3,006.33
20	SFADP20	215.0	\$3,469.92
24	SFADP24	322.0	\$4,475.62
30	SFADP30	601.0	\$6,660.12
36	SFADP36	726.0	\$8,835.54

SIGMAFLANGE UNIVERSAL JOINT – SFUP FOR DUCTILE IRON, PVC, STEEL, HDPE PIPE

Nominal Pipe Size (in.)	Item No.	Weight (lbs.)	List Price
3	SFUP3	13	\$209.28
4	SFUP4	19	\$267.87
6	SFUP6	28	\$393.61
8	SFUP8	37	\$621.71
10	SFUP10	58	\$881.91
12	SFUP12	66	\$1,130.87
14	SFUP14	80	\$1,676.89
16	SFUP16	109	\$2,465.78
18	SFUP18	124	\$2,761.77
20	SFUP20	160	\$3,048.13
24	SFUP24	209	\$3,717.22
30	SFUP30	402	POA
36	SFUP36	583	POA



For Reference only: When ordering, customers should separately order the SFA adapter and Wedge Action Restrainer with accessories.

ZIP-FLANGE™ Field Installed Adapter Flange

For Ductile Iron Pipe (DI O.D.) to Flanged Fitting, Valve, Pump ...
STANDARD DUTY

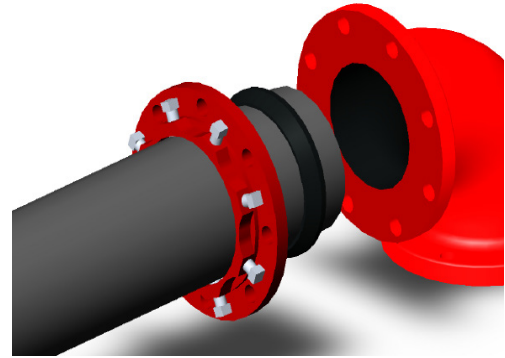
Size (in.)	Item No.	Weight (lbs.)	List Price
2	ZF2-C2	4	\$65.08
3	ZF2-C3	5	\$80.53
4	ZF2-C4	8	\$108.87
6	ZF2-C6	10	\$117.28
8	ZF2-C8	16	\$162.87
10	ZF2-C10	22	\$292.54
12	ZF2-C12	31	\$341.22

For Steel Pipe O.D. to Flanged Fitting, Valve, Pump ...
STANDARD DUTY

Size (in.)	Item No.	Weight (lbs.)	List Price
2	ZF2-S2	4	\$93.05
3	ZF2-S3	5	\$119.06
4	ZF2-S4	8	\$125.70
6	ZF2-S6	10	\$158.44
8	ZF2-S8	16	\$173.94
10	ZF2-S10	22	\$355.39
12	ZF2-S12	31	\$419.12

STANDARD DUTY

Size (in.)	Item No.	Weight (lbs.)	List Price
14	ZF4-C14	70	\$775.82
16	ZF4-C16	79	\$971.87
18	ZF4-C18	90	\$1,098.90
20	ZF4-C20	145	\$1,328.59
24	ZF4-C24	175	\$1,791.95
30	ZF4-C30	270	\$3,072.29
36	ZF4-C36	400	\$4,514.61
42	ZF4-C42	602	\$5,630.15
48	ZF4-C48	680	\$7,515.56



SNAP-ON GASKET

Multi-Purpose gasket for mechanical joints on pipes with IPS or C900/DIP outside diameters

Size (in.)	Item No.	Weight (lbs.)	List Price
4	SOG4	0.675	\$13.77
6	SOG6	0.931	\$20.12
8	SOG8	1.181	\$26.37
10	SOG10	1.450	\$30.97
12	SOG12	1.475	\$38.72

