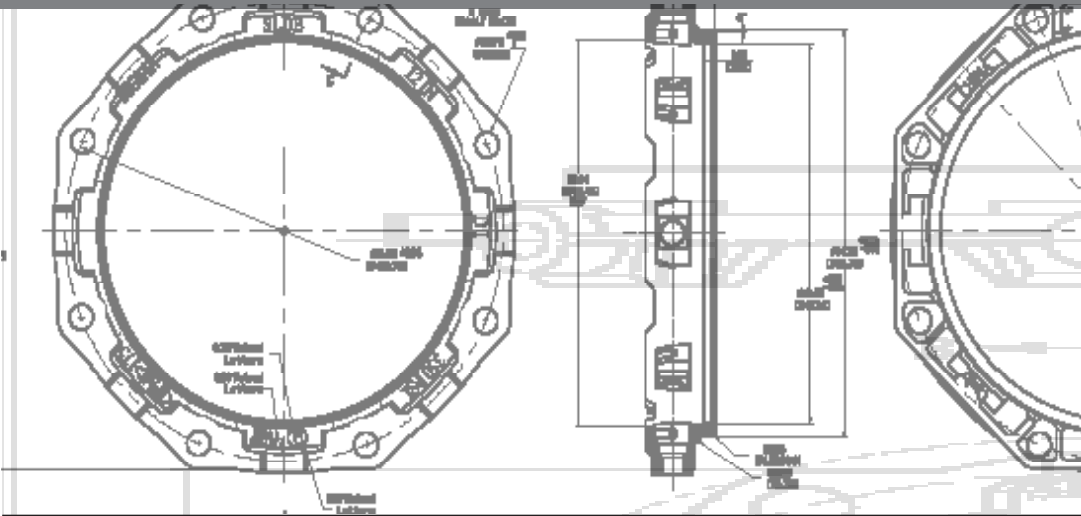


Pipe Restraint Products Price List



Effective January 23, 2023

- **Domestic PL2023-1**



DOMESTIC PRICE LIST

ONE-LOK™ Wedge Action Restraints for Ductile Iron Pipe

ONE-LOK SERIES D-SLDE

Wedge-Action Gland Restraint- Domestically Manufactured

Nominal Pipe Size (in.)	Item No. (Shop Coated)	Weight (lbs.)	List Price
3	D-SLDE3	6.5	\$58.64
4	D-SLDE4	10	\$62.47
6	D-SLDE6	12	\$73.53
8	D-SLDE8	15.5	\$112.22
10	D-SLDE10	26	\$166.09
12	D-SLDE12	34	\$241.66
14	D-SLDE14	45	\$310.96
16	D-SLDE16	59	\$444.81
18	D-SLDE18	60	\$630.08
20	D-SLDE20	75	\$781.37
24	D-SLDE24	140	\$1,085.10
30	D-SLDE30	226	\$2,648.91
36	D-SLDE36	307	\$3,415.77
42	D-SLDE42	432	\$6,312.58
48	D-SLDE48	568	\$7,898.57

*SLDE Restraints were previously referred to as SLD
**Electrodeposition Coatings available on request, contact SIGMA for details.

ONE-LOK SERIES D-SLDEP

Wedge-Action Gland Restraint Accessory Kit - Domestically Manufactured

Nominal Pipe Size (in.)	Item No. (Shop Coated)	Weight (lbs.)	List Price
3	D-SLDEP3	8.5	\$98.47
4	D-SLDEP4	14	\$106.96
6	D-SLDEP6	17	\$134.84
8	D-SLDEP8	21.5	\$180.08
10	D-SLDEP10	34	\$257.22
12	D-SLDEP12	42	\$339.96
14	D-SLDEP14	55	\$425.96
16	D-SLDEP16	71	\$576.86
18	D-SLDEP18	72	\$766.16
20	D-SLDEP20	89	\$935.93
24	D-SLDEP24	156	\$1,271.73
30	D-SLDEP30	273	\$3,186.88
36	D-SLDEP36	363	\$4,059.69
42	D-SLDEP42	548	\$6,312.57
48	D-SLDEP48	701	\$7,898.56

NOTE REGARDING ONE-LOK Accessory Kits:

- 3"-16" are packaged in a shrink wrapped carton
- 18"-48" are bulk packaged
- 30" - 48" include a SIGMA-SEAL gasket

ONE-LOK SERIES D-SLDE-X

Wedge-Action Gland Restraint- Domestically Manufactured (E-Coat)

Nominal Pipe Size (in.)	Item No. (E-Coat)	Weight (lbs.)	List Price
3	D-SLDE-X3	6.5	\$58.64
4	D-SLDE-X4	10	\$62.47
6	D-SLDE-X6	12	\$73.53
8	D-SLDE-X8	15.5	\$112.22
10	D-SLDE-X10	26	\$166.09
12	D-SLDE-X12	34	\$241.66
14	D-SLDE-X14	45	\$310.96
16	D-SLDE-X16	59	\$444.81
18	D-SLDE-X18	60	\$630.08
20	D-SLDE-X20	75	\$781.37
24	D-SLDE-X24	140	\$1,085.10
30	D-SLDE-X30	226	\$2,648.91
36	D-SLDE-X36	307	\$3,415.77
42	D-SLDE-X42	432	\$6,312.58
48	D-SLDE-X48	568	\$7,898.57

ONE-LOK SERIES D-SLDE-XP

Wedge-Action Gland Restraint Accessory Kit - Domestically Manufactured (E-Coat)

Nominal Pipe Size (in.)	Item No. (E-Coat)	Weight (lbs.)	List Price
3	D-SLDE-XP3	8.5	\$98.47
4	D-SLDE-XP4	14	\$106.96
6	D-SLDE-XP6	17	\$134.84
8	D-SLDE-XP8	21.5	\$180.08
10	D-SLDE-XP10	34	\$257.22
12	D-SLDE-XP12	42	\$339.96
14	D-SLDE-XP14	55	\$425.96
16	D-SLDE-XP16	71	\$576.86
18	D-SLDE-XP18	72	\$766.16
20	D-SLDE-XP20	89	\$935.93
24	D-SLDE-XP24	156	\$1,271.73
30	D-SLDE-XP30	273	\$3,186.88
36	D-SLDE-XP36	363	\$4,059.69
42	D-SLDE-XP42	548	\$6,312.57
48	D-SLDE-XP48	701	\$7,898.56

DOMESTIC PRICE LIST

ONE-LOK™ TM Wedge Action Restraints for PVC Pipe

ONE-LOK SERIES D-SLDE

Wedge-Action Gland Restrainer- Domestically
Manufactured

Nominal Pipe Size (in.)	Item No. (Shop Coated)	Weight (lbs.)	List Price
3	D-SLCE3	6	\$71.10
4	D-SLCE4	7	\$76.70
6	D-SLCE6	10	\$92.96
8	D-SLCE8	14	\$137.58
10	D-SLCE10	21	\$260.14
12	D-SLCE12	27	\$273.38
14	D-SLCE14	34	\$439.56
16	D-SLCE16	42	\$590.63
18	D-SLCE18	50	\$732.60
20	D-SLCE20	61	\$908.22
24	D-SLCE24	79	\$1,048.19
30	D-SLCE30	198	\$2,990.39
36	D-SLCE36	248	\$3,726.11

ONE-LOK SERIES D-SLDEP

Wedge-Action Gland Restrainer Accessory Kit -
Domestically Manufactured

Nominal Pipe Size (in.)	Item No. (Shop Coated)	Weight (lbs.)	List Price
3	D-SLCEP3	9	\$112.96
4	D-SLCEP4	11	\$121.60
6	D-SLCEP6	16	\$155.10
8	D-SLCEP8	21	\$207.71
10	D-SLCEP10	30	\$352.82
12	D-SLCEP12	37	\$371.34
14	D-SLCEP14	48	\$554.57
16	D-SLCEP16	58	\$722.69
18	D-SLCEP18	67	\$868.68
20	D-SLCEP20	82	\$1,062.78
24	D-SLCEP24	101	\$1,234.82
30	D-SLCEP30	225	\$3,540.88
36	D-SLCEP36	307	\$4,435.32

ONE-LOK SERIES D-SLCE-X

Wedge-Action Gland Restrainer- Domestically
Manufactured (E-Coat)

Nominal Pipe Size (in.)	Item No. (E-Coat)	Weight (lbs.)	List Price
3	D-SLCE-X3	6	\$71.10
4	D-SLCE-X4	7	\$76.70
6	D-SLCE-X6	10	\$92.96
8	D-SLCE-X8	14	\$137.58
10	D-SLCE-X10	21	\$260.14
12	D-SLCE-X12	27	\$273.38
14	D-SLCE-X14	34	\$439.56
16	D-SLCE-X16	42	\$590.63
18	D-SLCE-X18	50	\$732.60
20	D-SLCE-X20	61	\$908.22
24	D-SLCE-X24	79	\$1,048.19
30	D-SLCE-X30	198	\$2,990.39
36	D-SLCE-X36	248	\$3,726.11

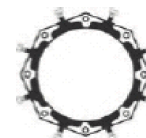
ONE-LOK SERIES D-SLCEP-XP

Wedge-Action Gland Restrainer Accessory Kit -
Domestically Manufactured (E-Coat)

Nominal Pipe Size (in.)	Item No. (E-Coat)	Weight (lbs.)	List Price
3	D-SLCE-XP3	9	\$112.96
4	D-SLCE-XP4	11	\$121.60
6	D-SLCE-XP6	16	\$155.10
8	D-SLCE-XP8	21	\$207.71
10	D-SLCE-XP10	30	\$352.82
12	D-SLCE-XP12	37	\$371.34
14	D-SLCE-XP14	48	\$554.57
16	D-SLCE-XP16	58	\$722.69
18	D-SLCE-XP18	67	\$868.68
20	D-SLCE-XP20	82	\$1,062.78
24	D-SLCE-XP24	101	\$1,234.82

(4" through 12" AWWAC-900 or ASTM D2241 IPS, 14" through 24" AWWA C-905) to Mechanical Joint Fittings.

*SLCE Restraints were previously referred to as SLC



PV-LOK™ Series D-PWP for Bell Joint Restraint (CIOD)

Pipe Size	Item #	Weight	List Price
4	D-PWP-C4	20	\$101.97
6	D-PWP-C6	22	\$140.54
8	D-PWP-C8	40	\$227.95
10	D-PWP-C10	50	\$397.42
12	D-PWP-C12	60	\$434.79

Domestic PV-Loks 4" – 12" are rated for the working pressure of PVC pipes with a minimum safety factor of 2:1.

Domestic PV-LOKS 4" - 10" are FM approved for 150 psi.

For calculation of clearance for a pipe in casing, add a minimum of 1 1/2" to the "B" dimension mentioned in the above table.