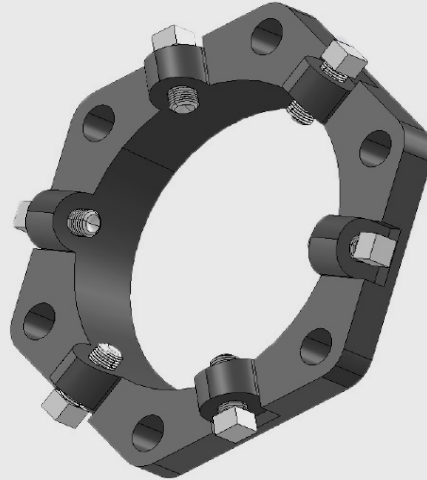
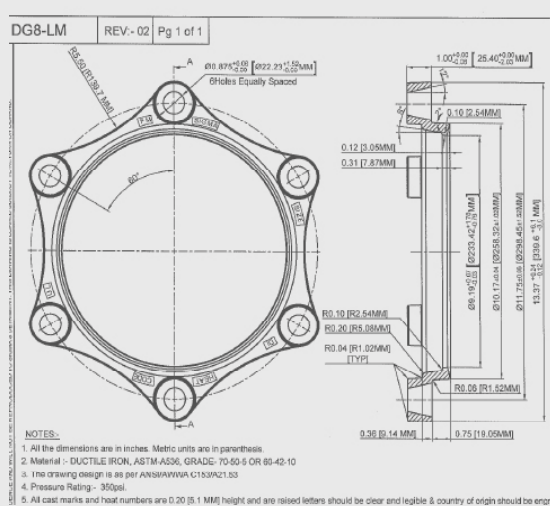


## Accessory Products

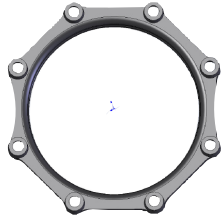


- Ductile Iron Set Screw Retainer Glands
- Mechanical Joint And Transition Gaskets
- Mechanical Joint Glands
- Mechanical Joint T-Bolts And Nuts
- Prepackaged Mechanical Joint Accessories
- SIGMASEAL™ Improved MJ Gasket

# Accessory Products

## Mechanical Joint Compact Fittings Accessories

Ductile Iron Class 350 as per ANSI/AWWA C153/A21.53



### MJ Glands

Size	Item No.	Wt. (lb)
2	DG2	1.30
3	DG3	2.08
4	DG4	3.33
6	DG6	4.93
8	DG8	5.85
10	DG10	7.84
12	DG12	9.85
14	DG14	14.70
16	DG16	18.19
18	DG18	29.81
20	DG20	33.95
24	DG24	40.00
30	DG30	83.77
36	DG36	114.00
42	DG42	165.00
48	DG48	192.00
54	DG54	286.50
60	DG60	312.00
64	DG64	388.00

### MJ Gland Packs

Size	Item No.	Wt. (lb)
2	DGP2	6.00
3	DGP3	7.00
4	DGP4	8.00
6	DGP6	12.00
8	DGP8	15.00
10	DGP10	20.00
12	DGP12	25.00
14	DGP14	37.00
16	DGP16	43.00
18	DGP18	47.00
20	DGP20	61.00
24	DGP24	72.00
30	DGP30	117.00
36	DGP36	157.00
42	DGP42	255.00
48	DGP48	361.00
54	DGP54	412.00
60	DGP60	446.00
64	DGP64	533.00

*Includes: Gland, MJ Gasket, and Standard Tee Bolts & Nuts*

### MJ Gaskets & MJ Transition Gasket

Size	Item No.	Wt. (lb)	Item No.	Wt. (lb)
2	MG2			
3	MG3	0.25	TG3	0.50
4	MG4	0.30	TG4	0.60
6	MG6	0.50	TG6	0.75
8	MG8	0.75	TG8	1.10
10	MG10	0.80	TG10	1.30
12	MG12	1.00	TG12	1.65
14	MG14	1.30	TG14	2.50
16	MG16	1.45	TG16	3.00
18	MG18	1.60		
20	MG20	1.90		
24	MG24	2.10		
30	MG30	2.30		
36	MG36	2.75		
42	MG42	3.20		
48	MG48	3.65		

*TG14-TG16 are not standard and AWWA  
TG14-TG16 are not pressure rated*

*Please contact your territory representative for more information and submittals*

## Packaged Accessories

Quality – Service – Commitment – Delivered.

### Retainer Gland Pack - Includes Gland, MJ Gasket and Std. T-Head Bolts

Size	Item No.	Wt. (lb.)
3	RGP3	9.00
4	RGP4	10.00
6	RGP6	15.00
8	RGP8	19.00
10	RGP10	25.00
12	RGP12	32.00

### MJ Bolt & Gasket (Less Gland)

Size (in.)	Item No.	Wt. (lb.)	Bolt Size
2	MGP2	1.60	
3	MGP3	2.83	5/8 x 3
4	MGP4	3.57	3/4 x 3-1/2
6	MGP6	5.29	3/4 x 3-1/2
8	MGP8	5.84	3/4 x 4
10	MGP10	7.70	3/4 x 4
12	MGP12	7.86	3/4 x 4
14	MGP14	14.00	3/4 x 4-1/2
16	MGP16	12.10	3/4 x 4-1/2
18	MGP18	12.32	3/4 x 4-1/2
20	MGP20	14.25	3/4 x 4-1/2
24	MGP24	17.30	3/4 x 5
30	MGP30	40.00	1 x 6
36	MGP36	28.00	1 x 6
42	MGP42	76.00	1-1/4 x 6-1/2
48	MGP48	90.00	1-1/4 x 6-1/2
54	MGP54	136.00	1-1/4 x 6-1/2
60	MGP60	137.50	1-1/4 x 6-1/2
64	MGP64	145.00	1-1/4 x 6-1/2

### MJ Transition Bolt & Gasket Pack (Less Gland)

Size (in.)	Item No.	Wt. (lb.)
2	TGP2	1.00
3	TGP3	3.00
4	TGP4	4.00
6	TGP6	6.00
8	TGP8	7.00
10	TGP10	8.00
12	TGP12	9.00

### MJxSDR35 Transition Gasket

Size	Item No.	Wt. (lb.)
4	TSG04	0.66
6	TSG06	0.90
8	TSG08	1.22
10	TSG10	1.40
12	TSG12	1.80

### Gland Pack - Includes Gland, MJ Transition Gasket and Std. T-Head Bolts

Size (in.)	Item No.	Wt. (lb.)
3	DXP3	7.00
4	DXP4	8.00
6	DXP6	12.00
8	DXP8	15.00
10	DXP10	20.00
12	DXP12	25.00

### SIGMA SEAL MJ Gasket

Size (in.)	Item No.	Wt. (lb.)
3	MGS3	1.00
4	MGS4	0.42
6	MGS6	0.55
8	MGS8	0.76
10	MGS10	0.93
12	MGS12	1.02
14	MGS14	1.00
16	MGS16	1.00
18	MGS18	2.00
20	MGS20	2.00
24	MGS24	2.00
30	MGS30	4.20
36	MGS36	4.00
42	MGS42	5.00
48	MGS48	6.00
54	MGS54	6.50
60	MGS60	7.50
64	MGS64	8.00

## High-Strength, Low Alloy Steel T-Head Bolts

### Standard Bolts

Size (in.)	Item No.	Wt. (lb.)
5/8x3	TB30	0.50
3/4x3 1/2	TB35	0.75
3/4x4	TB40	0.85
3/4x4 1/2	TB45	1.00
3/4x5	TB50	1.25
1x5	TB60	1.25
1x6	TB61	2.25
1 1/4x6	TB65	2.50
1 1/4x6 1/2	TB65	4.00
3/4x7	TB70	0.63
1x8	TB80	3.00
3/4x9	TB90	0.72

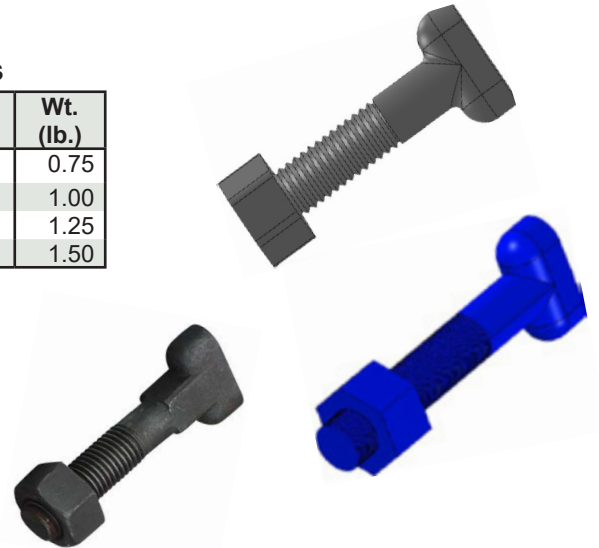
### Anti-Rotation Bolts

Size (in.)	Item No.	Wt. (lb.)
3/4X3 1/2	ATB35	0.75
3/4X4	ATB40	1.00
3/4X4 1/2	ATB45	1.25
3/4X5	ATB50	1.50

Material: Corten ASTM A242 – Standard, Anti-Rotation T-Bolts  
Finish: Bare plain finish with antirust corrosion preventative coating

Sigma also offer other materials, coatings & sizes  
SS 304,316  
Fluoropolymer, Galvanized, Plated

Please contact your territory representative for more information and submittals



## LOCATIONS

### Northeast Region

#### Cream Ridge, New Jersey (HQ)

700 Goldman Drive  
 Cream Ridge, NJ 08514  
 Phone (800) 999-2550  
 crmcslr@sigmaco.com

### REPCO

51 Rue Gingras  
 Warwick, QC J0A 1M0  
 Phone (888) 744-6262  
 jboucher@repcocan.com

### Concord Supply

2353 Bowman Street  
 Innisfil, Ontario L9S 3V6  
 Phone (877) 436-3800  
 tanya@concordsupply.ca

### SIGMA-Edmonton

26224 Highway 37  
 Sturgeon County, Alberta T8T 0H3  
 Phone (780) 458-9676  
 pbrunelle@sigmaco.com

### Midwest Region

#### Sauk Village, Illinois

21699 Torrence Avenue  
 Sauk Village, IL 60411  
 Phone (888) 999-0420  
 chicsr@sigmaco.com

### Denver, Colorado

22700 I-76 Frontage Rd  
 Brighton, CO 80603  
 Phone (888) 999-0420  
 dbrugger@sigmaco.com

### Southeast Region

#### Alexander City, Alabama

1500 Highway 22 W  
 Alexander City, AL 35010  
 Phone (800) 824-4513  
 alxcsr@sigmaco.com

### Southwest Region

#### Houston, Texas

5000 Askins Lane  
 Houston, TX 77093  
 Phone (800) 999-0109  
 htncsr@sigmaco.com

### Western Region

#### Ontario, California

4652 E. Guasti Road  
 Ontario, CA 91761  
 Phone (800) 688-6230  
 ontcsr@sigmaco.com

### Auburn, Washington (Branch)

902 W Main Street  
 Auburn, WA 98001  
 Phone (800) 688-6230  
 ontcsr@sigmaco.com

[www.sigmaco.com](http://www.sigmaco.com)

Terms and Conditions of Sales available at our website.

## AWWA Ductile Iron Fittings



- 2-64" C153 Ductile Iron Mechanical Joint Fittings
- 2-48" C110 Ductile Iron Mechanical Joint Fittings
- 2-64" C110 Ductile Iron Flanged Fittings
- 3-24" C153 Ductile Iron Push-On Fittings
- 4-24" C110 Ductile Iron Push-On Fittings
- 3-36" Ductile Iron Mechanical Joint Connector
- C116 Fusion Bonded Epoxy Lining Available
- PROTECTO 401® Ceramic Epoxy Lining Available

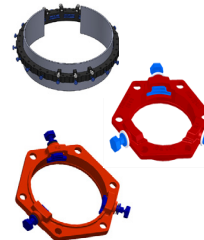
Visit our website for available special coatings. <https://www.sigmaco.com/project/fittings-coatings-linings/>

## Mechanical Joint Accessories



- Prepackaged and Loose Mechanical Joint Accessories
- SIGMASEAL™ Improved Mechanical Joint Gasket
- Snap-On Multi-Purpose Gasket for Ductile Iron or PVC Pressure Pipes
- OMNI-SLEEVE™ Improved Wall Penetration Sleeve
- Specialty Bolts and Nuts for Mechanical Joint Assemblies

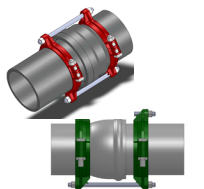
## ONE-LOK™ Wedge Action Restraints



- 3-48" ONE-LOK D-SLDE Domestic Wedge Restraint for Ductile Iron Pipe
- 3-64" ONE-LOK SLDE Wedge Restraint for Ductile Iron Pipe (Import)
- 4-48" ONE-LOK T-SLDE Tandem Wedge Restraint for High Pressure Ductile Iron Pipe
- 3-36" ONE-LOK D-SLCE Domestic Wedge Restraint for PVC Pipe
- 3-12" ONE-LOK SLC Wedge Restraint for PVC Pipe (Import)
- 3-60" ONE-LOK SLCE Wedge Restraint for PVC Pipe (Import)
- 3-42" ONE-LOK SLDEH Wedge Harness Restraint for Ductile Iron Pipe
- 4-12" /16" /20" ONE-LOK SLDM Wedge Restraint for Oversized Cast Iron Pipe
- 4-48" ONE-LOK SSLD Split Wedge Restraint for Installed Ductile Iron Pipe & Fitting
- 4-36" ONE-LOK SSLDH Split Wedge Harness Restraint for Installed Ductile Iron Pipe
- 4-12" ONE-LOK SLCEH Wedge Harness Restraint for AWWA C900 PVC Pipe
- 3-12" ONE-LOK Series SLO MJ Restraining Gland

Visit our website for available special coatings. <https://www.sigmaco.com/download/corr-safe-alternative-coating-for-enhanced-exterior-corrosion-protection-on-wedge-and-serration-type-restrainers/>

## PV-LOK™ Serration Lock Restraints



- 4-48" PV-LOK PWM Serrated Restraint for Ductile Iron Fitting & AWWA C900/905 PVC Pipe
- 4-48" PV-LOK PWP Serrated Bell Joint Restraint for AWWA C900/905 PVC Pipe
- 4-12" PV-LOK D-PWP Domestic Serrated Bell Joint Restraint for AWWA C900 PVC Pipe
- 4-12" PV-LOK PVPF Restraint for AWWA C900/905 PVC Pipe & PVC Fitting
- 4-12" PV-LOK PWH Serrated Harness Restraint for AWWA C900 PVC Pipe
- 2-12" PV-LOK PVM Serrated Restraint for Ductile Iron & IPS OD PVC pipe
- 2-12" PV-LOK PVP Serrated Bell Joint Restraint for IPS OD PVC Pipe
- 2-8" PV-LOK PVPF Serrated Restraint for IPS OD PVC Pipe & PVC Fitting
- 4-12" PV-LOK PWP Serrated Bell Joint Restraint for Ductile Iron Pipe

Visit our website for available special coatings. <https://www.sigmaco.com/download/corr-safe-alternative-coating-for-enhanced-exterior-corrosion-protection-on-wedge-and-serration-type-restrainers/>

## HDPE (Raven) Products



- Rotational Molded Meter Boxes & Pits
- Optional White Interior Available
- Light & Medium Duty Load Capacities
- Extensive Nationwide Inventory
- Rotational Molded Oil-Water Separators
- OEM Service Available

## Municipal Construction Castings



- Manhole Rings and Covers
- Curb and Meter Boxes
- Frames and Grates
- Storm Inlets
- Valve Boxes, Risers, and Extensions

## Products for the Ductile Iron Fabricator



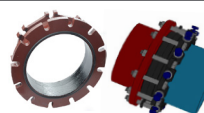
- 3-64" High Hub Threaded Flanges
- 3-48" Tapped High Hub Threaded Flanges
- 3-36" Extra Heavy 250lb Drilled Threaded Flanges
- 3-48" Threaded MJ Bell Adapters
- 3-48" MJ x PE Bell adapter
- 3-48" Anchor Flanges
- 3-16" Filler Flanges

## Extended Range Products



- Flange-Pak™ Prepackaged Flange Accessory Sets
- Polyethylene Encasement for Ductile Iron Pipe
- Copper Tubing Products
- Tracer Wire & Detectable/Non-Detectable Marking Tape
- Pipe Joint Lubricant & Hydraulic Cement
- Socket Clamps and Tie Rod Accessories
- Boxlok Valve Box Alignment Device
- Cast Iron Companion Flanges

## Flange Adapters



- 3-36" SIGMAFLANGE Flange Adapter Sleeve for PVC and Ductile Iron Pipe
- 2-48" ZIP FLANGE Set Screw Style Flange Adapter
- 3-36" SIGMAFLANGE Universal Joint for Flanged Fittings, Flanged Pipes & Valves