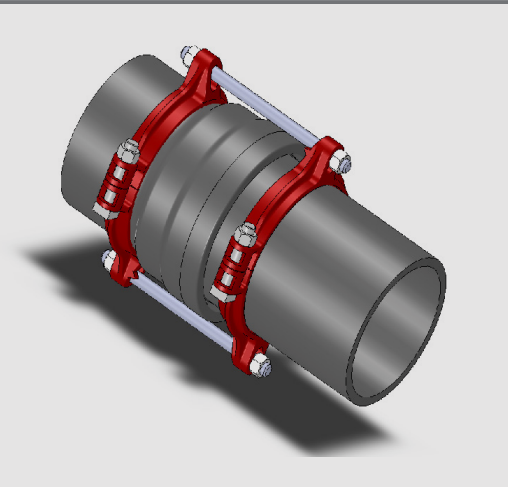
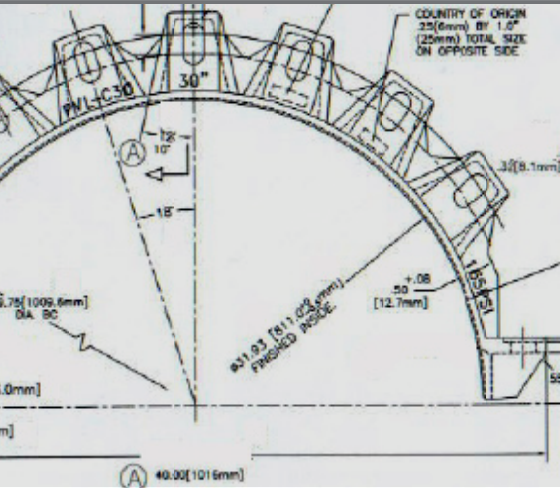
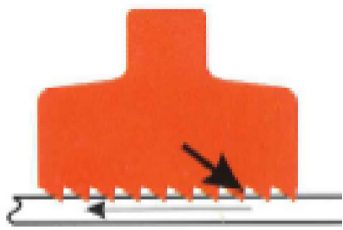


PV-LOK™ Series PWP for use on Ductile Iron Pipe



Features & Advantages:

The PV-LOK Series PWP serration-style clamping ring may successfully be used for the restraint of bell and spigot ductile iron pipe joints manufactured in accordance with AWWA/ANSI C150/A21.50 and AWWA/ANSI C151/A21.51. Rated pressure of the restraint system for ductile iron pipe is shown in the table below.



Cross Section of PV-LOK illustrates directional grip of serrations to maximize restraint of PVC pipe

Sample Specification:

Bell joint restraint devices for ductile iron pipe in sizes 4-12" shall consist of two serrated clamping restrainer rings. One ring shall be installed on the spigot pipe and connected to the second ring on the bell end pipe with restraining rods and nuts. Restraint devices shall incorporate a series of machined serrations that provide positive restraint, exact fit, and full support of the pipe wall.

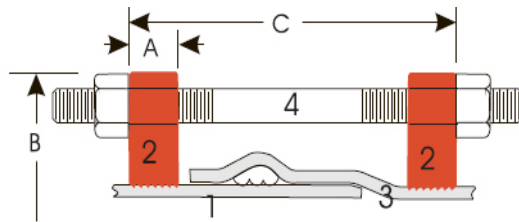
The restraint device shall provide the necessary bolts and nuts to complete the pipe bell joint restraint assembly. Restraint devices for securing ductile iron pipe bell joints in sizes 4-12" shall be SIGMA PV-LOK™ Series PWP or approved equal.

Material:

- Clamping ring is manufactured of high strength ductile iron in accordance with ASTM A536, grade 65-45-12.
- Side clamping bolt and hex nuts are high strength steel in accordance with ASTM A449 and zinc plated to B633, Type III Sc.1 for corrosion resistance.
- Restraining rods and hex nuts are of high strength, low alloy steel in accordance with AWWA/ANSI C111/A21.11 and provide a minimum 45,000 psi yield and 60,000 psi tensile strength.



PV-LOK™ Series PWP for use on Ductile Iron Pipe

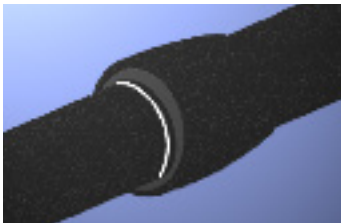


1. Plain End Pipe
2. Restrainer Clamp
3. Bell End Pipe
4. Restraining Rod

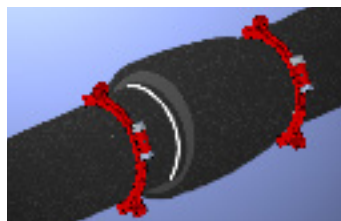
Dimensions in Inches, Weights in Pounds

Size	For Ductile Iron Pipe	DI Pipe OD	A	B	C (max)	Clamping Bolt Torque	Weight	Pressure Rating
	Item No.							
4	PWP-C4	4.80	1.20	9.00	13.00	85	14	250
6	PWP-C6	6.90	1.20	11.52	13.00	85	16	250
8	PWP-C8	9.05	1.75	12.81	13.00	100	27	250
10	PWP-C10	11.10	1.75	16.88	16.00	125	51	200
12	PWP-C12	13.20	1.75	19.12	22.00	125	57	200

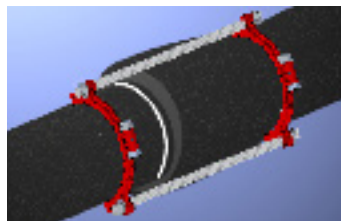
Installation Instructions for PV-LOK™ Series PWP for use on Ductile Iron Pipe



1. Assemble plain-end pipe into bell according to pipe manufacturer's recommendations.



2. Assemble the PV-LOK™ Series PWP clamping rings on the spigot pipe (approx. 2 inches behind the insertion mark on the pipe) and immediately behind the pipe bell end, making sure the protrusions on the restrainer ears face toward each other to insure proper direction of the angled serrations. Tighten the side clamping bolts to recommended torque.



3. Insert the threaded rods provided and snug the retaining nuts against the restrainer ears (against the flat surface). Do not over-tighten retaining nuts, approximately one turn with a wrench.