

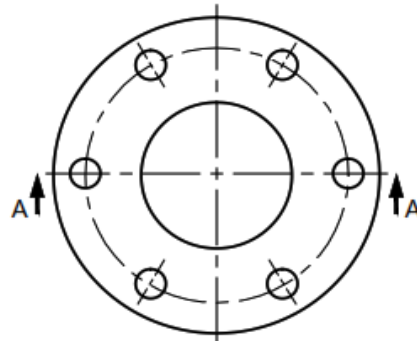
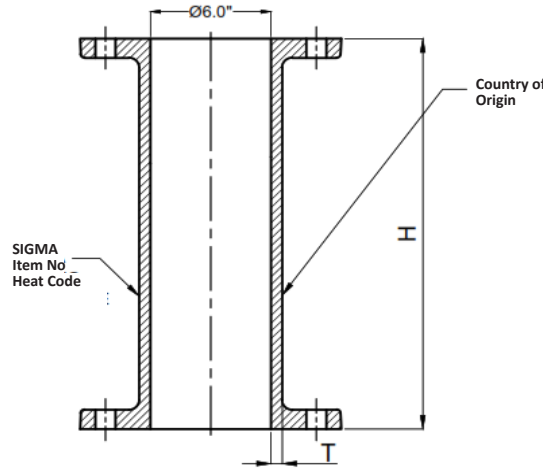


SIGMA™

Hydrant Extensions Cast Iron

Item#	Size	Wt (Lbs)
CHX604	6x4	39.50
CHX606	6x6	45.40
CHX608	6x8	51.27
CHX610	6x10	55.78
CHX612	6x12	62.35
CHX614	6x14	67.55
CHX616	6x16	73.44
CHX618	6x18	79.32
CHX620	6x20	85.21
CHX622	6x22	91.09
CHX624	6x24	96.98
CHX626	6x26	102.86
CHX628	6x28	108.75
CHX630	6x30	114.63
CHX632	6x32	120.52
CHX636	6x36	132.29

Section A-A



Notes:

1. Material: Cast Iron, ASTM-A48, Grade-Class 30
2. Pressure Rating: 250psi
3. Flanges are drilled with 6 holes (Los Angeles) of 3/4" diameter @ 9 1/2" bolt circle diameter, 8 holes of 7/8" diameter @ 9 1/2" bolt circle diameter, or 6 holes (San Diego) of 7/8" diameter @ 9 1/2" bolt circle diameter.
4. Break-off extensions are provided with a single machined break-off groove (double break-off only available on the San Diego drilled).
5. Cement-mortar lined thickness as per ANSI/AWWA C104/A21.4
6. Conforms to AWWA C503-18 standard

	Rev	Date	Revision Record	Prepared by	Approved by	TOLERANCES UNLESS OTHERWISE SPECIFIED CAST: 0"-1" ±0.04" 0-25mm ±1mm 1"-4" ±0.06" 25-100mm ±1.5mm 4"-16" ±0.09" 100-400mm ±2.3mm 18"-30" ±0.11" 457-762mm ±2.8mm 36"-60" ±0.13" 914-1524mm ±3.3mm	All Radii & Fillets to be 0.12" (3mm) unless otherwise specified. All Draft angles to be 2° unless otherwise specified on drawing. Product Group :- Cast Iron Fittings Coating/Lining:- Asphaltic Coating/Cement Lined Type :- FITTING SIZE AND CAST MARKS Product Description:- Cast Iron Hydrant Extension Fitting & Cast Marks - 604 - 636 Dimensions Drawing Number :- CHX 64 - 636 Rev :- 0	SIGMA™ CREAM RIDGE, NEW JERSEY DATE: 12.10.2018 DRAWN BY: VK DRAWING FOR: SUBMITTAL CHECKED BY: PB SCALE: NTS SHEET NO: 1 OF 1 APPROVED BY: SR1

SIGMA Corporation

4652 E. Guasti Road
Ontario, CA 91761

800-688-6230 P
909-391-2033 F

www.sigmaco.com

February 2013