

# C110 DUCTILE IRON FLANGED FITTINGS

<b>Project Name:</b>	<b>Contractor:</b>	<b>Date</b>
<b>Engineer:</b>	<b>Spec Section:</b>	

## Optional Specifications

Coating	Lining
Red Primer <i>(In accordance with ANSI / AWWA C104/A21.04 and ANSI / AWWA C110/A21.10)</i>	Cement-Mortar *Double thickness with asphaltic coating <i>(In accordance with ANSI/AWWA C104/A21.4)</i>
Asphaltic Seal Coat <i>(In accordance with ANSI/AWWA C104/A21.04 and ANSI/AWWA C110/A21.10)</i>	Fusion Bonded Epoxy (FBE)*Interior and exterior <i>(In accordance with ANSI/AWWA C116/A21.16)</i>
Fusion Bonded Epoxy (FBE)*Interior and exterior <i>(In accordance with ANSI / AWWA C116/A21.16)</i>	Protecto 401 Ceramic Epoxy
Zinc <i>(In accordance with ISO 8179-2)</i>	<b>Others- Specify</b>
<b>Others- Specify</b>	



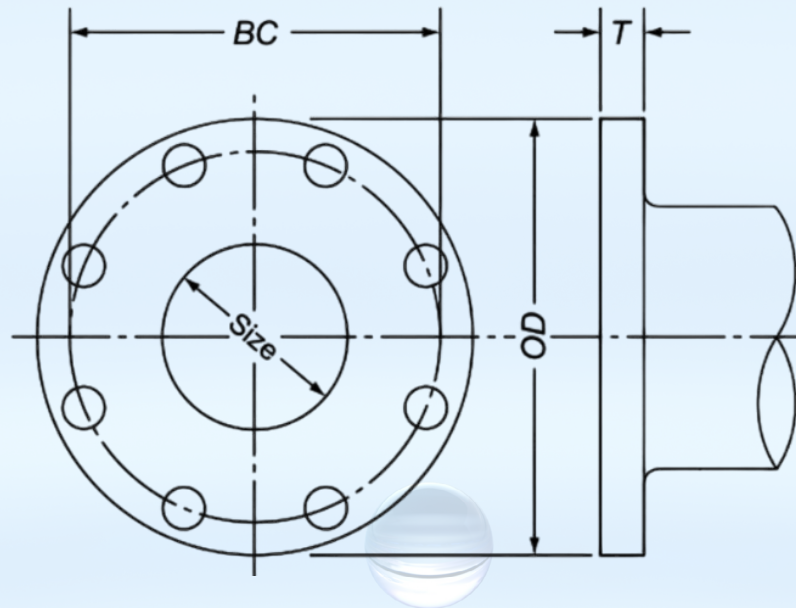
**WATER QUALITY**  
Certified to ANSI/NSF Standards 61 and 372



## Product Specifications

<b>Material:</b>	Ductile Iron ASTM A536 Grade 60-42-10, 65-45-12 or 70-50-05
<b>Pressure Rating:</b>	250 PSI rating for 2" – 48" sizes and 150 PSI rating for 54" – 64" sizes. (Higher PSI ratings available but are dependent on the gasket)
<b>Testing:</b>	In accordance with ANSI/AWWA C110/A21.10 & UL-FM Requirements.   Hydrostatically Tested in accordance with SIGMA Quality Management Standard.
<b>Traceability:</b>	All fittings are heat coded to ensure traceability and verification of metallurgical properties in accordance with SIGMA Quality Management Standards
<b>Size Range:</b>	2" - 64"
<b>Laying Length:</b>	3" – 48" : In accordance with ANSI/AWWA C110/A21.10, 54" – 64": In accordance with ANSI/AWWA C153/A21.53. Non-Standard Items will be as per SIGMA design.
<b>Approvals:</b>	3"-16" Underwriters Laboratories listed and Factory Mutual Approved. UL/NSF61 & 372.
<b>Standards</b>	ANSI/AWWA C110/A21.10 for Ductile Iron Fittings 2"-48" for water and other liquids, ANSI/AWWA C153 for Compact Ductile Iron Fittings 54" – 64" for water and other liquids, and NSF61, Annex G & 372.
<b>Installations:</b>	Per ANSI/AWWA C600 and C111 using DIP conforming to C150/C151 and PVC pipe conforming to C900/905.

# C110 DUCTILE IRON FLANGED FITTINGS



## Flange Details

Size	OD	BC	T	Hole Dia.	Bolt Size	No.Bolts
2*	6.00	4.75	0.62	0.75	5/8 x 2 1/2	4
3	7.50	6.00	0.75	0.75	5/8 x 2 1/2	4
4	9.00	7.50	0.94	0.75	5/8 x 3	8
5*	10.00	8.50	0.94	0.88	3/4 x 3	8
6	11.00	9.50	1.00	0.88	3/4 x 3 1/2	8
8	13.50	11.75	1.12	0.88	3/4 x 3 1/2	8
10	16.00	14.25	1.19	1.00	7/8 x 4	12
12	19.00	17.00	1.25	1.00	7/8 x 4	12
14	21.00	18.75	1.38	1.12	1 x 4 1/2	12
16	23.50	21.25	1.44	1.12	1 x 4 1/2	16
18	25.00	22.75	1.56	1.25	1 1/8 x 5	16
20	27.50	25.00	1.69	1.25	1 1/8 x 5	20
24	32.00	29.50	1.88	1.37	1 1/4 x 5 1/2	20
30	38.75	36.00	2.12	1.37	1 1/4 x 6 1/2	28
36	46.00	42.75	2.38	1.62	1 1/2 x 7	32
42	53.00	49.50	2.62	1.62	1 1/2 x 7 1/2	36
48	59.50	56.00	2.75	1.62	1 1/2 x 8	44
54*	66.25	62.75	3.00	2.00	1 3/4 x 8 1/2	44
60*	73.00	69.25	3.12	2.00	1 3/4 x 9	52
64*	80.00	76.00	3.38	2.00	1 3/4 x 9	52

\*Not included in AWWA C110

All dimensions are in inches