

SIGMAFLANGE™ ADAPTER MODEL SFA MODEL SFA FOR CONNECTING DUCTILE IRON PIPE, PVC PIPE OR STEEL PIPE TO FLANGE FITTING, VALVE AND OTHER APPURTENANCES

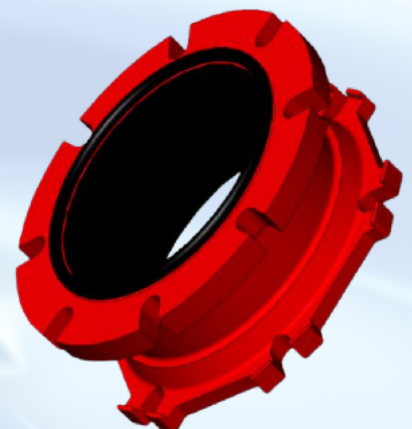
Project Name: Engineer:	Contractor: Spec Section:	Date
--	--	-------------

Optional Specifications

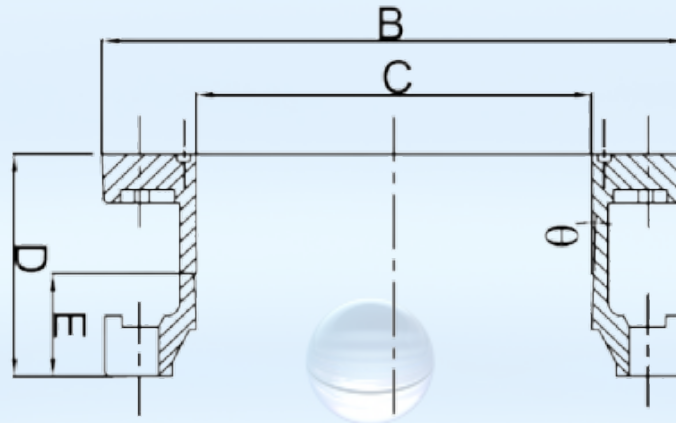
Bolts & Nuts	High Strength, Low Alloy Steel (HSLA) <i>(In accordance with ANSI/AWWA C111/A21.11)</i>	Gaskets	SBR <i>(In accordance with ANSI/AWWA C111/A21.11)</i>
	Stainless Steel ___Type 304 ___Type 316		EPDM
	Blue Fluoropolymer		Neoprene
	Other- Specify		Nitrile
			Other- Specify
Coating	Exterior is top-coated with Red Alkyd paint and interior top-coated with NSF61 black asphaltic lining.		
	Sleeve body, both exterior and interior, is coated with electro-deposition "CORRSAFE™"		

Product Specifications

Material:	Flange Adapter Sleeve is manufactured of high strength ductile iron in accordance with ASTM A536, Grade 65-45-12. O-ring gasket is manufactured of styrene butadiene rubber (SBR) per ANSI/AWWA C111/A21.11.
Pressure Rating:	DI Pipe - 350 psi for sizes 3"-16" & 250 psi for sizes 18" -36" PVC Pipe - Equal to the rated working pressure of the pipe Steel Pipe - 350 psi for sizes 3' - 12"
Factor of Safety:	2:1
Size Range:	3" - 36" on ductile iron pipe 4" - 36" on PVC pipe 4" - 12" on steel pipe
Approvals:	Underwriter Laboratories listed and Factory Mutual approved in sizes 3" - 12"
Deflection:	5° for 3"-12", 2° for 14"-16", 1-1/2° for 18"-24" and 1° for 30"-36"
Dimension:	Conform to ANSI/AWWA C110/A21.10 and ANSI/AWWA C153/A21.53 and ANSI/ AWWA C115/A21.15 (Class 125/150 drilling pattern).
Traceability:	Flange Adapter Sleeve is individually cast with exact heat code information
Installations:	In accordance with manufacturer's recommendation and applicable AWWA standards. Must be installed only in conjunction with the Sigma One Lok Model SLDE or SLCE and please refer to our submittal & installation information for wedge restraints.



SIGMAFLANGE™ ADAPTER MODEL SFA MODEL SFA FOR CONNECTING DUCTILE IRON PIPE, PVC PIPE OR STEEL PIPE TO FLANGE FITTING, VALVE AND OTHER APPURTENANCES



Dimensions in Inches, Weights in Pounds

Size	Item No.	Wt.	B	C	D	E
3	SFA3	8.0	7.50	4.06	3.63	2.50
4	SFA4	13.0	9.00	4.90	4.10	2.50
6	SFA6	19.5	11.00	7.00	5.07	2.50
8	SFA8	28.0	13.50	9.15	5.07	2.50
10	SFA10	16.00	16.00	11.20	5.37	2.50
12	SFA12	19.00	19.00	13.30	5.44	2.50
14	SFA14	21.00	21.00	15.44	6.42	3.50
16	SFA16	23.50	23.50	17.54	6.54	3.50
18	SFA18	25.00	25.00	19.64	7.15	3.50
20	SFA20	27.50	27.50	21.74	7.15	3.50
24	SFA24	32.00	32.00	25.94	7.65	3.50
30	SFA30	39.12	39.12	32.12	8.40	4.00
36	SFA36	38.42	46.00	38.42	9.40	4.00

[View Catalog](#)