

Curb Inlets



| NUMBER | DESCRIPTION | PAGE |
|---------------|---|-------------|
| FG 2060 | Frame, Grate & Hood, USE with 24" Curb & Gutter | 82 |
| FG 2075 | Frame, Grate & Hood | 83 |
| FG 2490M3-35 | Frame & Grate, Drive Over Type | 84 |
| FG 2495M3-35 | Frame & Grate, Drive Over Type | 85 |
| FG 413 | Frame, Grate & Hood Florida D.O.T Catch Basin | 86 |
| FG 512 | Frame & Cover 48" Cover | 87 |
| FG 2065 | Frame & Grate, Drive Over Type with 2 Grates | 88 |
| FG 2510 | Frame & Cover with 23 3/4" cover, Atlanta Catch Basin | 89 |



SIGMA CORPORATION

(800) 824-4513
 PO Box 519
 Alexander City, AL 35011
 (877) 857-7909
 West Landstreet Road
 Orlando, FL 32824

DRAWN BY: RJL DATE: 6/29/2006

CURB INLET

LOAD RATING:
 Meets H20 Loading Standards
 HEAVY DUTY

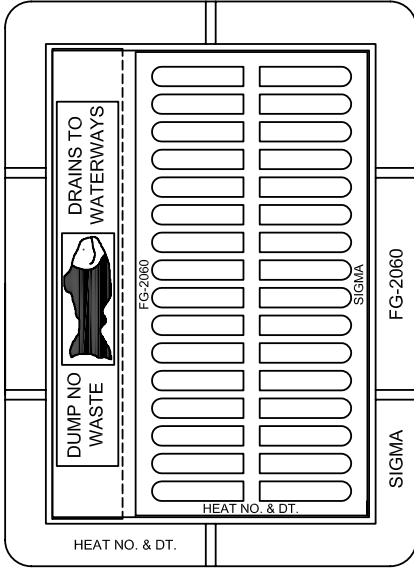
MATERIAL SPECIFICATION:
 CAST IRON
 ASTM A 48 CLASS 30B

OPEN AREA - SQ. IN.
290

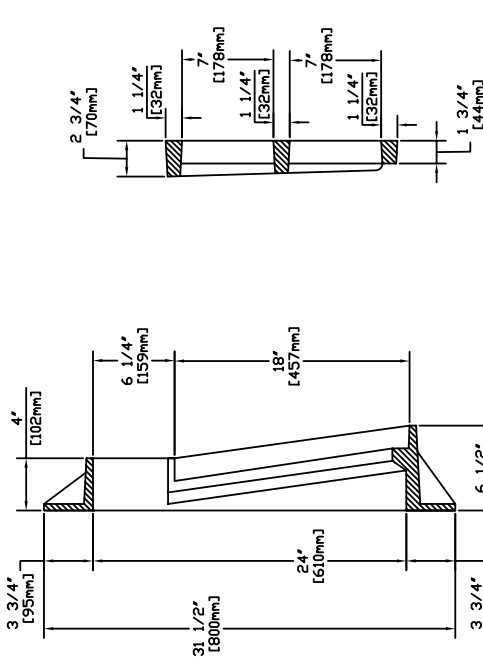
ESTIMATED WEIGHT - LB.
480

CATALOG NUMBER

FG-2060

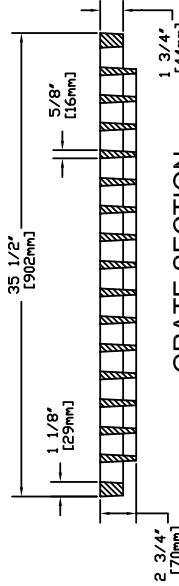


FRAME, GRATE AND HOOD TOP VIEW

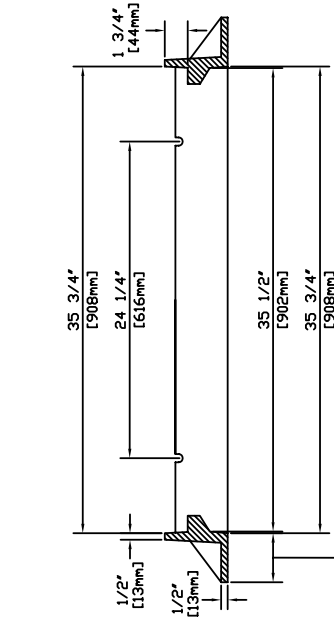


GRATE SECTION

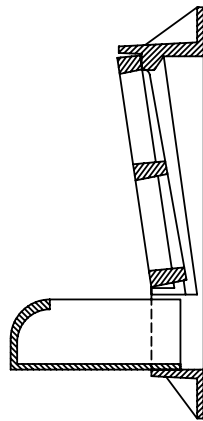
FRAME SECTION



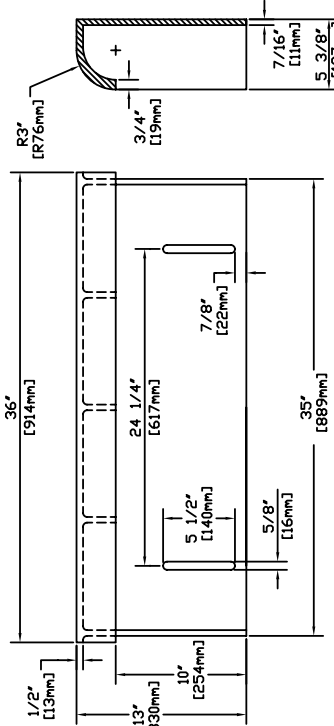
GRATE SECTION



FRAME SECTION



CROSS SECTION OF FRAME, GRATE & HOOD



HOOD SECTION

HOOD ELEVATION



SIGMA CORPORATION

(800) 824-4513
PO Box 519
Alexander City, AL 35011

(877) 857-7909
691 West Landstreet Road
Orlando, FL 32824

DRAWN BY: RJL DATE: 5/1/2007

CURB INLET

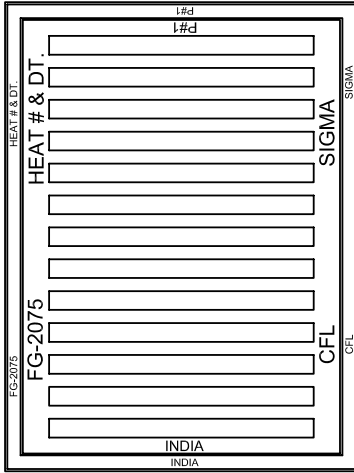
LOAD RATING:
Meets H20 Loading Standards
HEAVY DUTY

MATERIAL SPECIFICATION:
CAST IRON
ASTM A 48 CLASS 30B

OPEN AREA - SQ. IN.
491

ESTIMATED WEIGHT - LB.
479

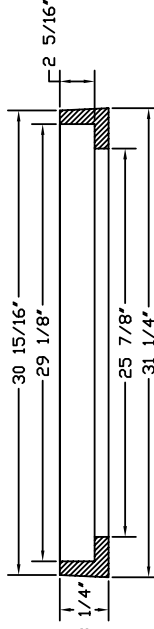
CATALOG NUMBER
FG-2075



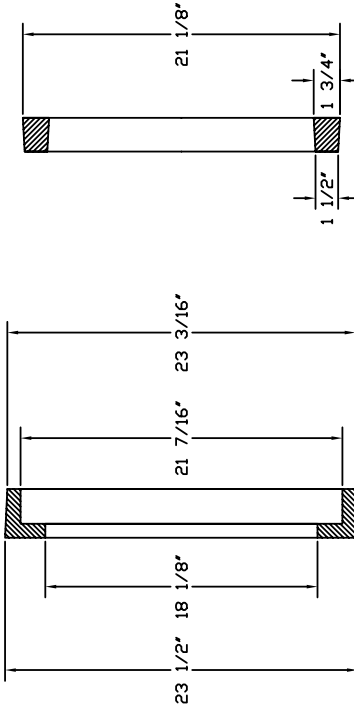
FRAME AND GRATE VIEW



GRATE SECTION

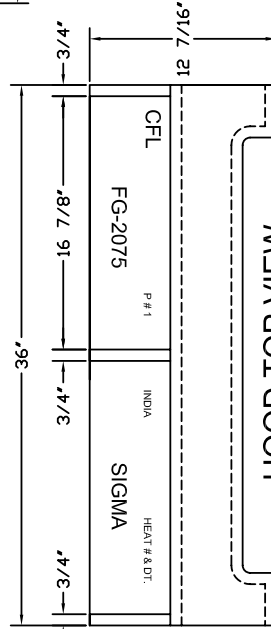


FRAME SECTION

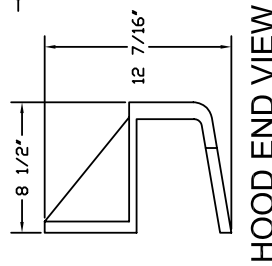


FRAME SECTION

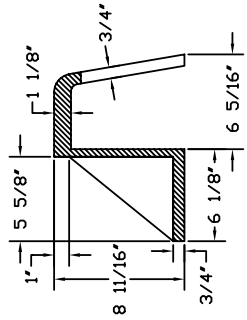
GRATE SECTION



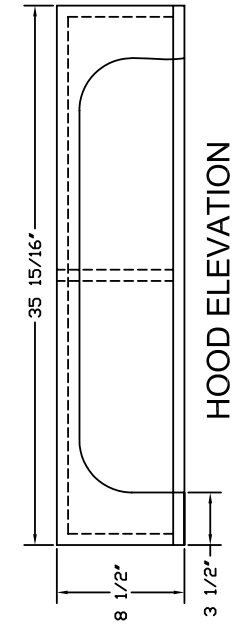
HOOD TOP VIEW



HOOD END VIEW



HOOD SECTION



HOOD ELEVATION



SIGMA CORPORATION

(800) 824-4513
 PO Box 519
 Alexander City, AL 35011
 (877) 857-7909
 West Landstreet Road
 Orlando, FL 32824

DRAWN BY: RJL DATE: 6/29/2006

CURB INLET

LOAD RATING:
 Meets H20 Loading Standards
 HEAVY DUTY

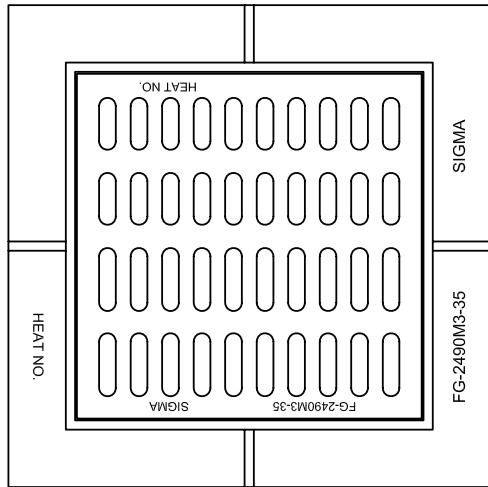
MATERIAL SPECIFICATION:
 CAST IRON
 ASTM A 48 CLASS 35

OPEN AREA - SQ. IN.
220

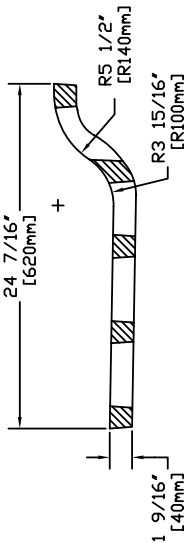
ESTIMATED WEIGHT - LB.
405

CATALOG NUMBER

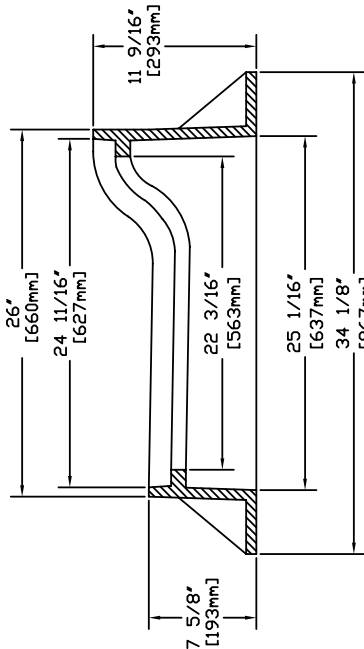
FG-2490M3-35



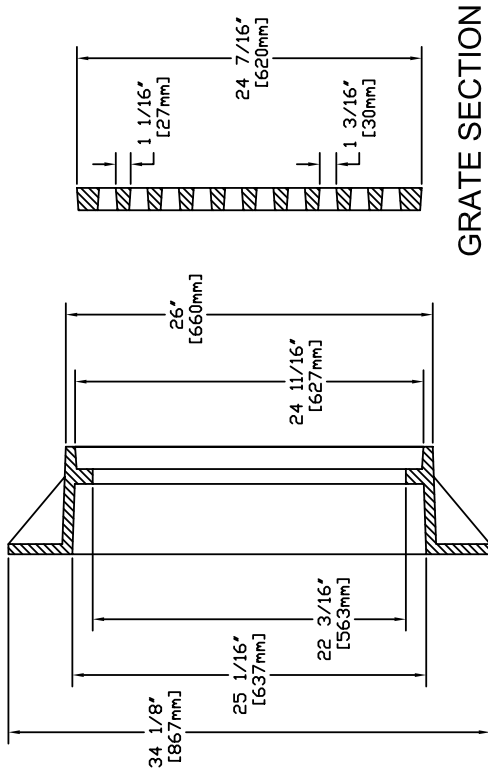
FRAME AND GRATE TOP VIEW



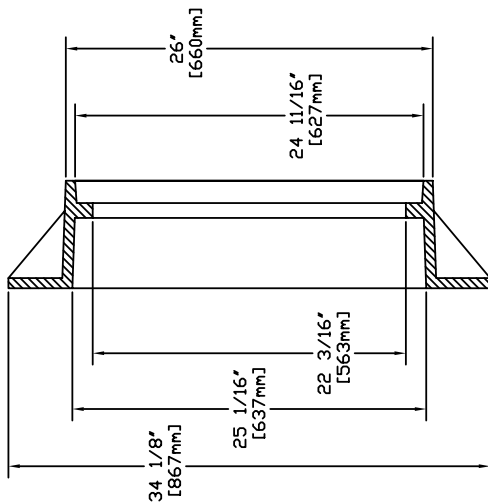
GRATE SECTION



FRAME SECTION



GRATE SECTION



FRAME SECTION



SIGMA
CORPORATION

(800) 824-4513
PO Box 519
Alexander City, AL 35011
(877) 857-7909
691 West Landstreet Road
Orlando, FL 32824

DRAWN BY: RJL DATE: 6/29/2006

CURB INLET

LOAD RATING:
Meets H20 Loading Standards
HEAVY DUTY

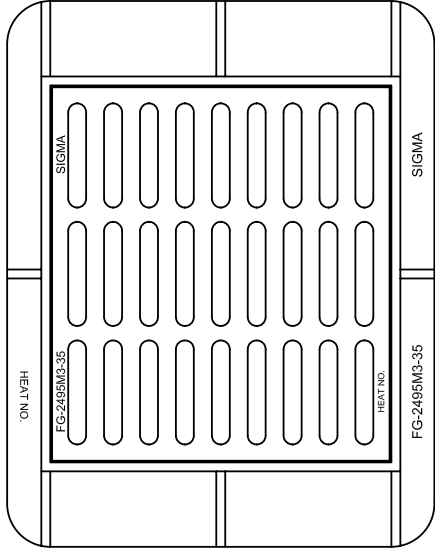
MATERIAL SPECIFICATION:
CAST IRON
ASTM A 48 **CLASS 35**

OPEN AREA - SQ. IN.
230

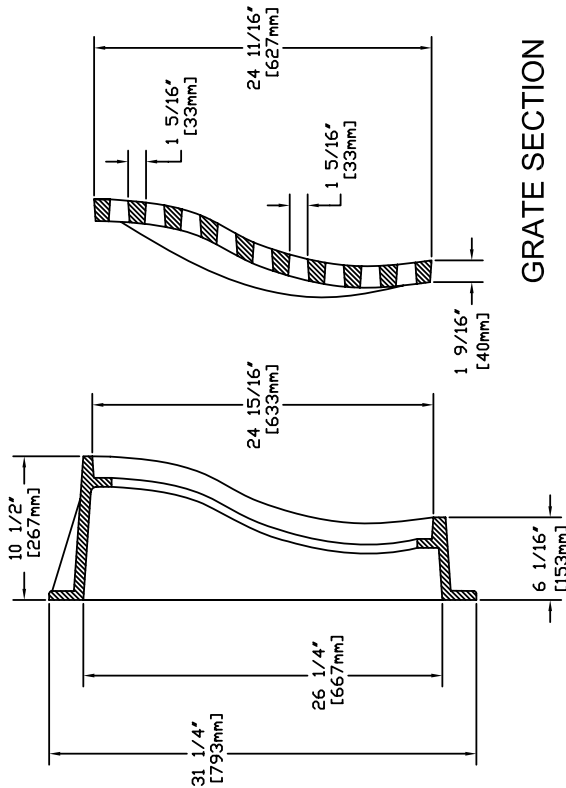
ESTIMATED WEIGHT - LB.
422

CATALOG NUMBER

FG-2495M3-35

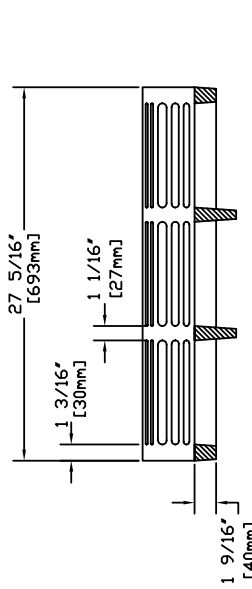


FRAME AND GRATE TOP VIEW

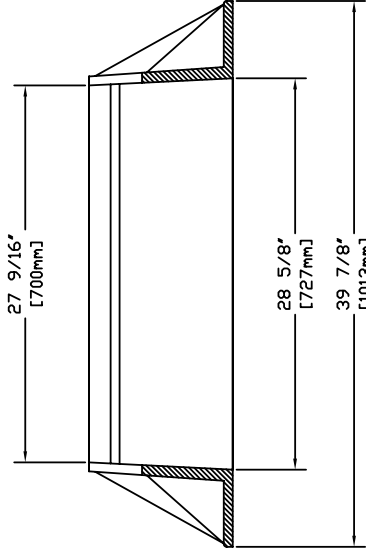


GRATE SECTION

FRAME SECTION



GRATE SECTION



FRAME SECTION



SIGMA CORPORATION

(800) 824-4513
 PO Box 519
 Alexander City, AL 35011
 (877) 857-7909
 West Landstreet Road
 Orlando, FL 32824

DRAWN BY: RJL DATE: 10/12/2006

**FLORIDA D.O.T
 CATCH BASIN
 FRAME, GRATE & HOOD**

LOAD RATING:
 Meets H20 Loading Standards
 HEAVY DUTY

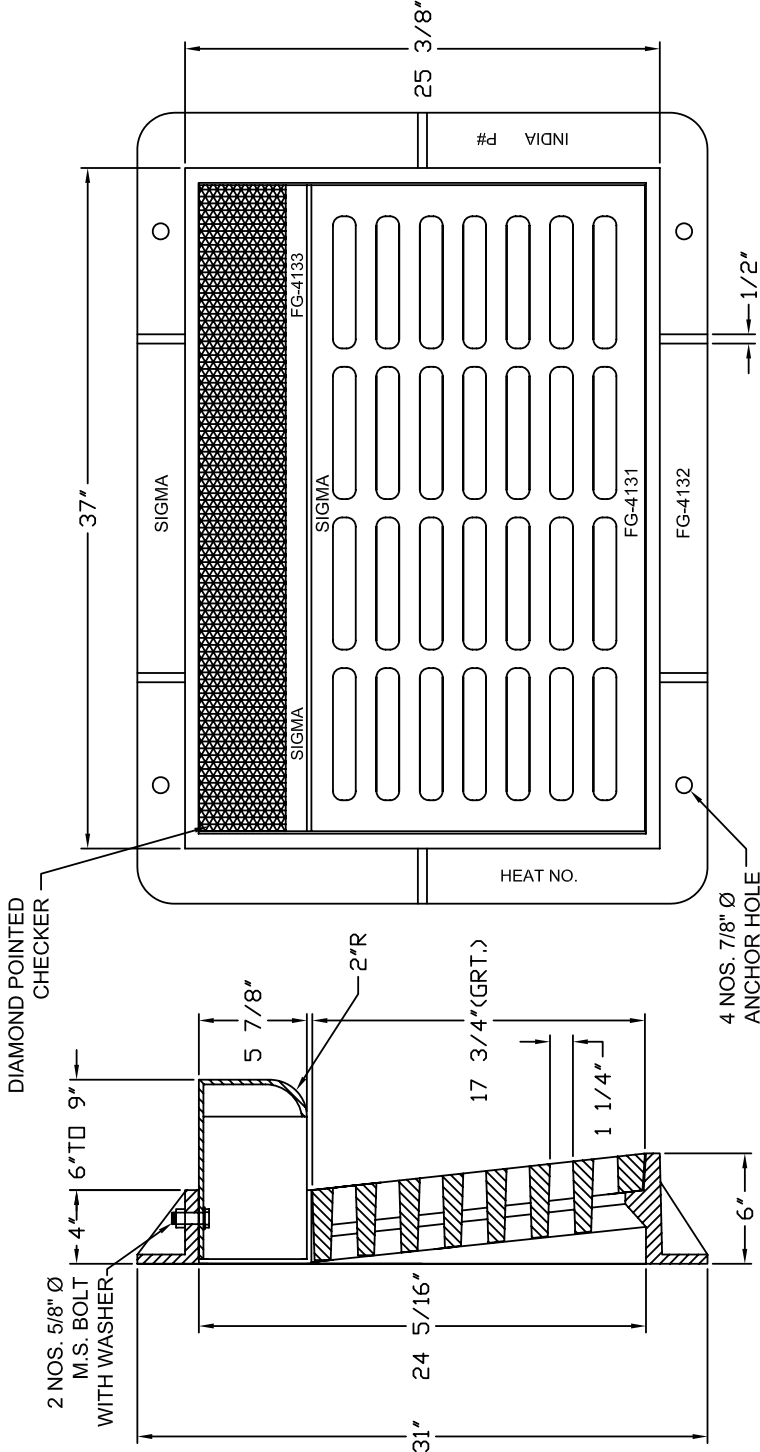
MATERIAL SPECIFICATION:
 CAST IRON
 ASTM A48 CLASS 30B

OPEN AREA - SQ. IN.
240

ESTIMATED WEIGHT - LB.
520

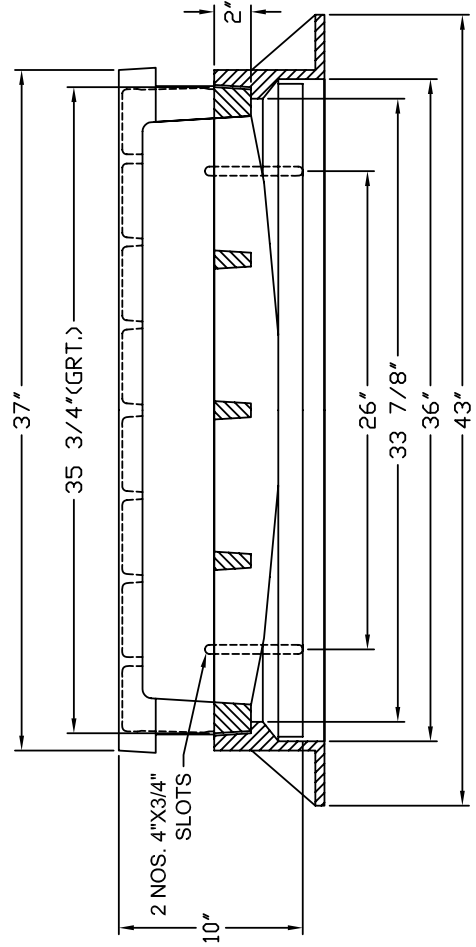
CATALOG NUMBER

FG-413



FRAME, GRATE AND HOOD TOP VIEW

FRAME, GRATE AND HOOD SECTION



FRAME, GRATE AND HOOD SECTION



SIGMA
CORPORATION

(800) 824-4513
PO Box 519
Alexander City, AL 35011

(877) 857-7909
691 West Landstreet Road
Orlando, FL 32824

DRAWN BY: RJL DATE: 5/1/2007

**CITY OF ATLANTA
CATCH BASIN**

LOAD RATING:
Meets H20 Loading Standards
HEAVY DUTY

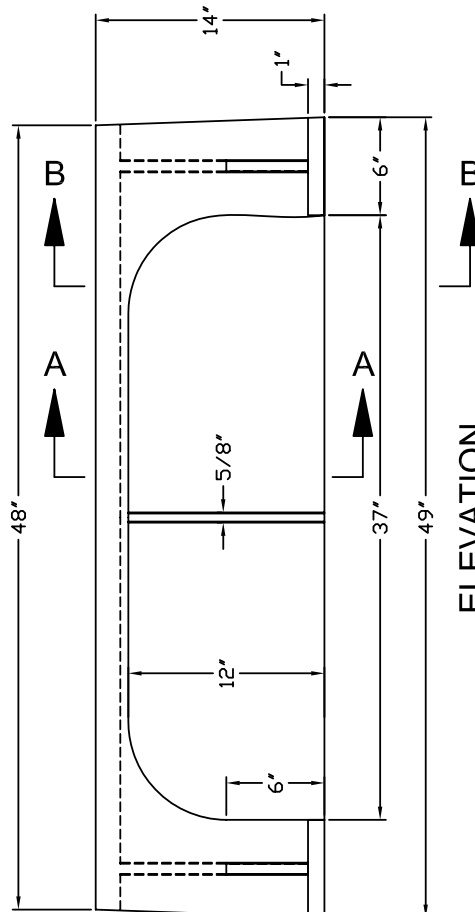
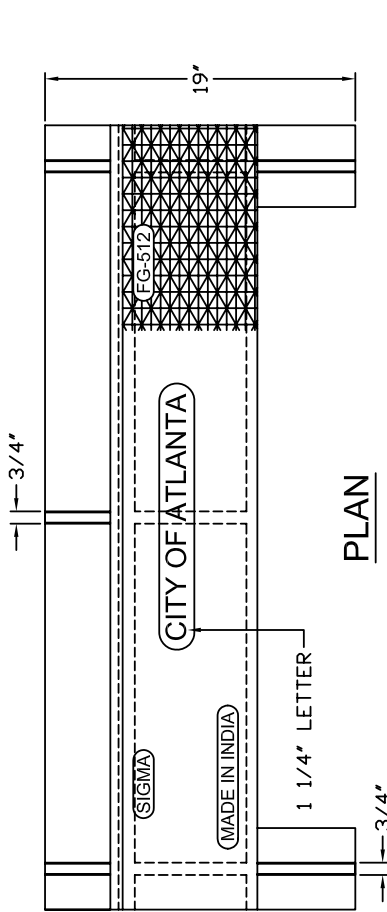
MATERIAL SPECIFICATION:
CAST IRON
ASTM A48 CLASS 30B

OPEN AREA - SQ. IN.
N/A

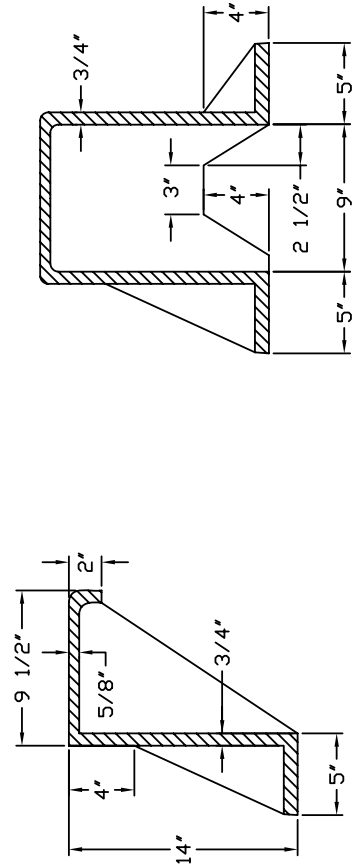
ESTIMATED WEIGHT - LB.
497

CATALOG NUMBER

FG-512



ELEVATION



SECTION-"A-A"

SECTION-"B-B"



SIGMA CORPORATION

(800) 824-4513
 PO Box 519
 Alexander City, AL 35011
 (877) 857-7909
 West Landstreet Road
 Orlando, FL 32824

DRAWN BY: RJL DATE: 6/29/2006

CURB INLET

LOAD RATING:
 Meets H20 Loading Standards
 HEAVY DUTY

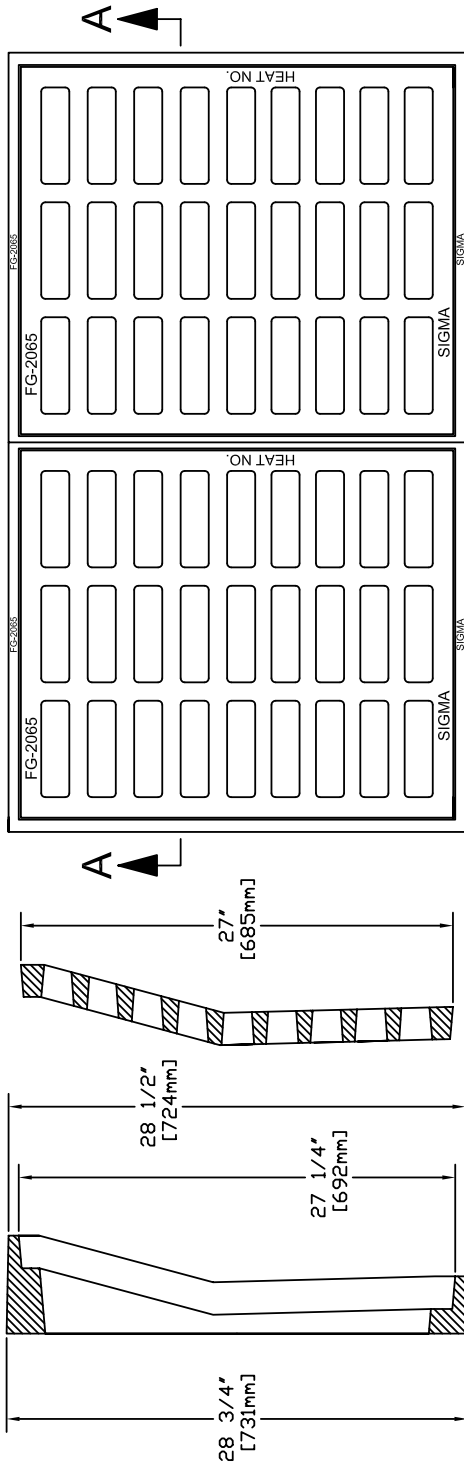
MATERIAL SPECIFICATION:
 CAST IRON
 ASTM A 48 CLASS 30B

OPEN AREA - SQ. IN.
544

ESTIMATED WEIGHT - LB.
580

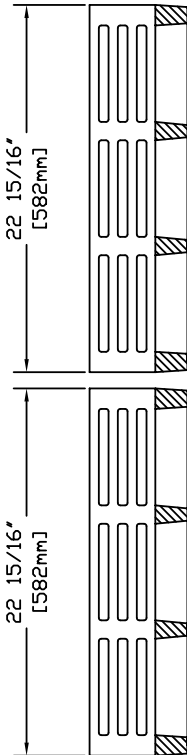
CATALOG NUMBER

FG-2065

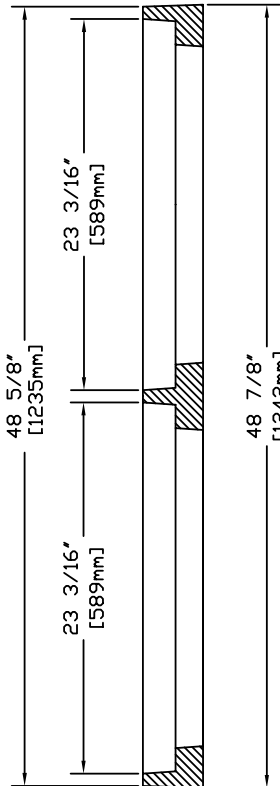


FRAME AND GRATE TOP VIEW

FRAME SECTION



GRATE SECTION
 A-A



FRAME SECTION
 A-A



SIGMA CORPORATION

(800) 824-4513
 PO Box 519
 Alexander City, AL 35011
 (877) 857-7909
 West Landstreet Road
 Orlando, FL 32824

DRAWN BY: RJL DATE: 5/7/2007

ATLANTA CATCH BASIN FRAME & COVER

LOAD RATING:
 NON-TRAFFIC
 LIGHT DUTY

MATERIAL SPECIFICATION:
 CAST IRON
 ASTM A 48 CLASS 30B

OPEN AREA - SQ. IN.
N/A

ESTIMATED WEIGHT - LB.
430

CATALOG NUMBER

FG-2510

