

# Watertight Manholes



<b>NUMBER</b>	<b>DESCRIPTION</b>	<b>PAGE</b>
MH 2170NWT	Ring & Cover Sanitary Sewer with "O" Ring Type Gasket	44
MH 2195NWT	Ring & Cover Sanitary Sewer with "O" Ring Type Gasket	45
MH 3104NWT	Ring & Cover Sanitary Sewer 4" Ring Watertight with 4 Bolts and Gasket	46



**SIGMA CORPORATION**

(800) 824-4513  
PO Box 519  
Alexander City, AL 35011

(877) 857-7909  
691 West Landstreet Road  
Orlando, FL 32824

DRAWN BY: RJL DATE: 10/1/2007

**RING & COVER  
(WATERTIGHT)  
4 BOLTS & "O" RING  
GASKET**

LOAD RATING:  
Meets H20 Loading Standards  
HEAVY DUTY

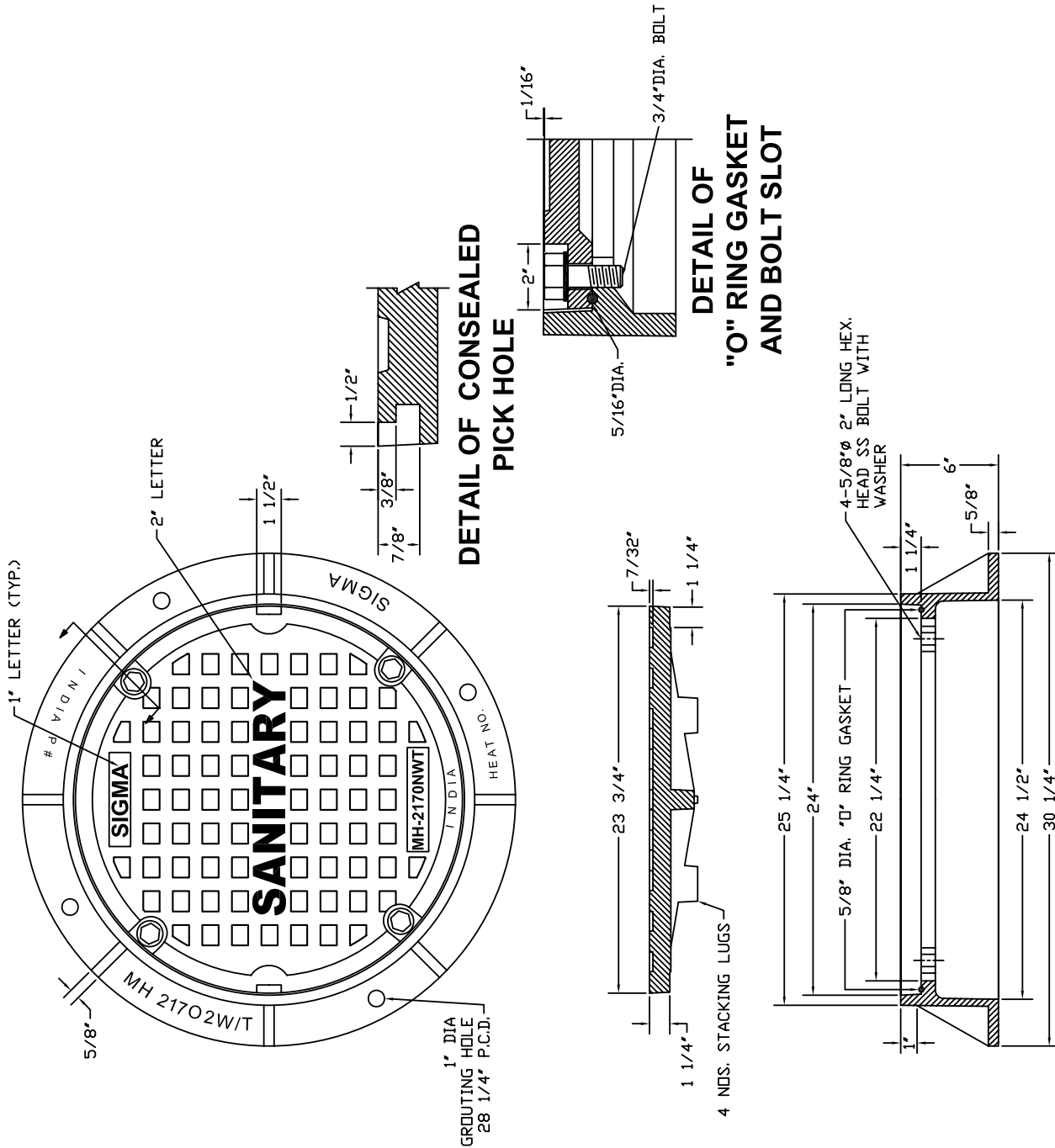
MATERIAL SPECIFICATION:  
CAST IRON  
ASTM A 48 CLASS 30B

OPEN AREA - SQ. IN.  
**N/A**

ESTIMATED WEIGHT - LB.  
**269**

CATALOG NUMBER

**MH-2170NW/T**





**SIGMA CORPORATION**

(800) 824-4513  
 PO Box 519  
 Alexander City, AL 35011  
 (877) 857-7909  
 West Landstreet Road  
 Orlando, FL 32824

DRAWN BY: RJL DATE: 6/19/2006

**RING & COVER  
 WATERTIGHT  
 ("O" RING GASKET)**

LOAD RATING:  
 Meets H20 Loading Standards  
 HEAVY DUTY

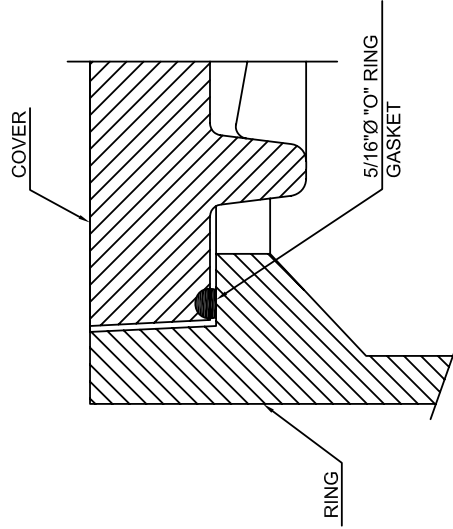
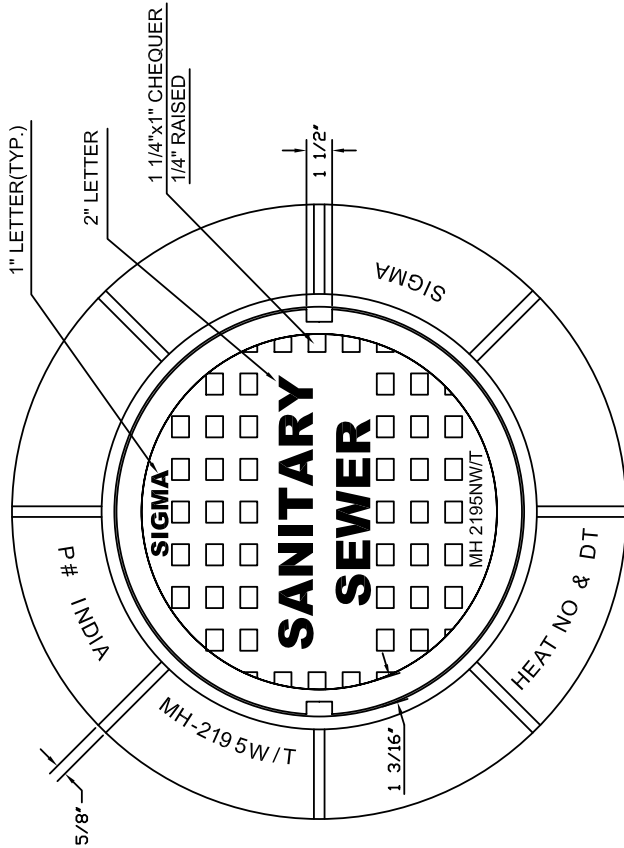
MATERIAL SPECIFICATION:  
 CAST IRON  
 ASTM A 48 CLASS 30B

OPEN AREA - SQ. IN.  
 N/A

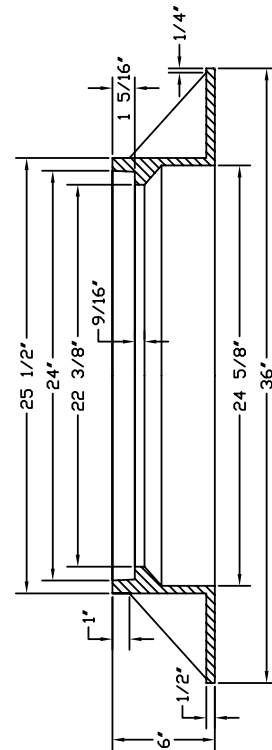
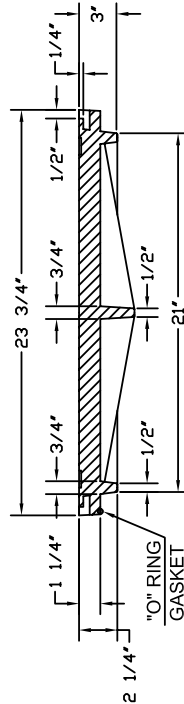
ESTIMATED WEIGHT - LB.  
 315

CATALOG NUMBER

**MH-2195N-W/T**



**ENLARGE VIEW  
 OF WATER TIGHT**





**SIGMA CORPORATION**

(800) 824-4513  
PO Box 519  
Alexander City, AL 35011

(877) 857-7909  
691 West Landstreet Road  
Orlando, FL 32824

DRAWN BY: RJL DATE: 6/19/2006

**RING & COVER  
(WATERTIGHT)  
4 BOLTS & FLAT  
GASKET**

LOAD RATING:  
Meets H20 Loading Standards  
HEAVY DUTY

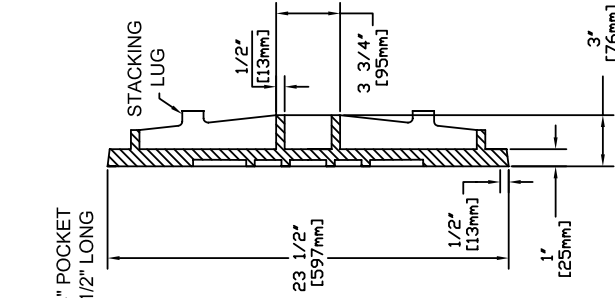
MATERIAL SPECIFICATION:  
CAST IRON  
ASTM A 48 CLASS 30B

OPEN AREA - SQ. IN.  
N/A

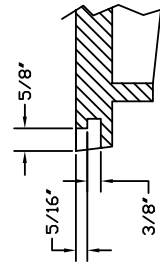
ESTIMATED WEIGHT - LB.  
240

CATALOG NUMBER

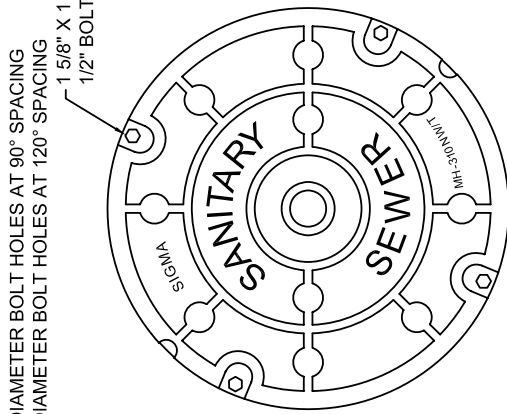
**MH-3104NW/T**



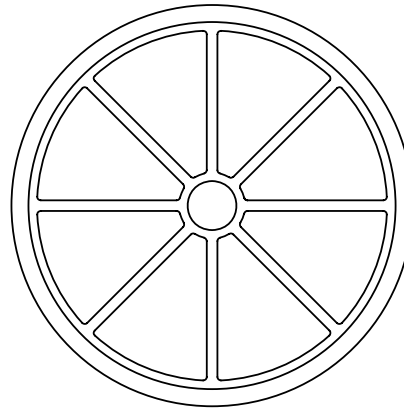
**COVER SECTION**



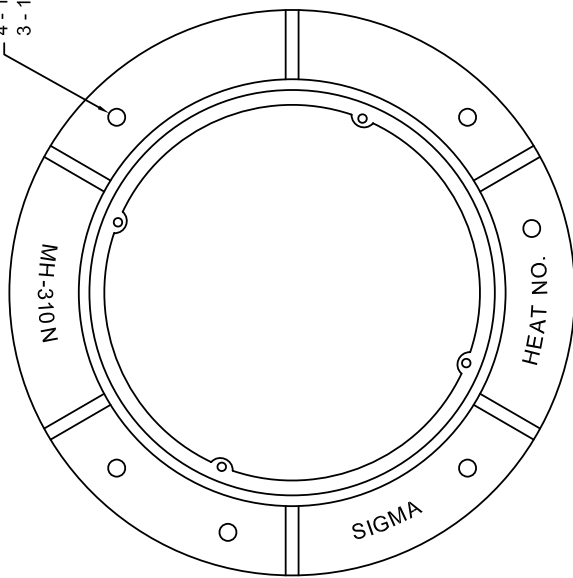
**DETAIL OF  
CONSEALED  
PICK HOLE**



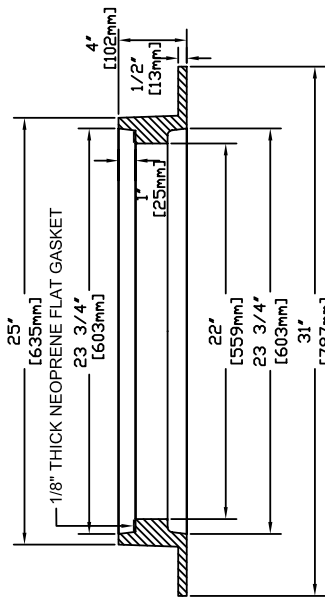
**COVER FACE**



**COVER BACK**



**FRAME TOP VIEW**



**FRAME SECTION**